



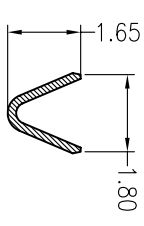
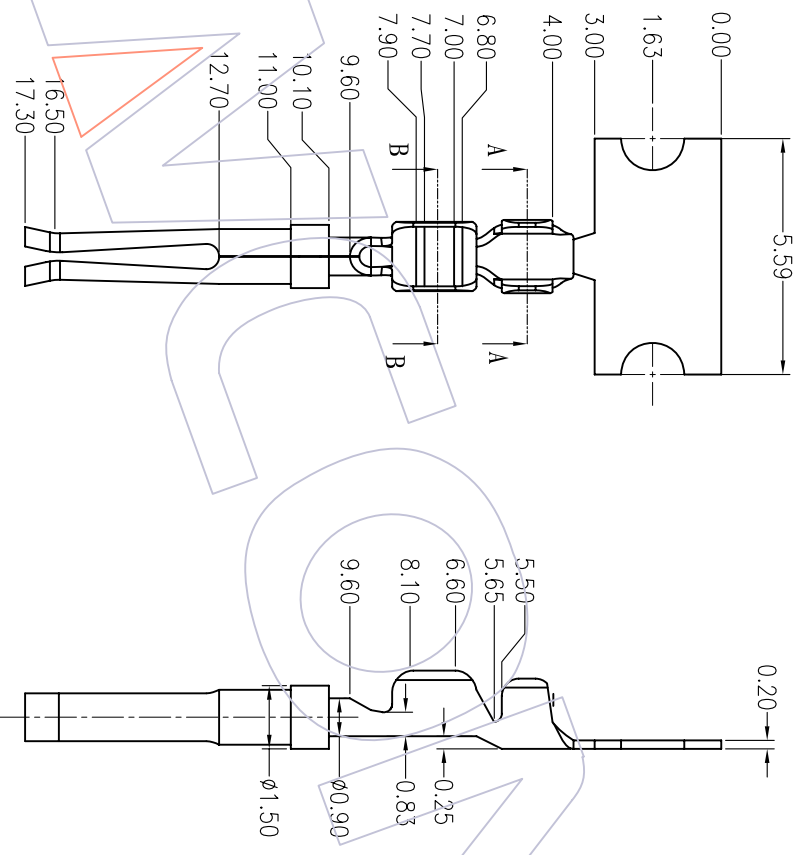
**NOTES:**

- Rated Current: 3.0AMP
- Contact Resistance: 20mΩ max
- Withstand Voltage: 500V AC/Minute
- Insulation Resistance: 1000MΩ min
- Operation Temperature: -55°C to +105°C
- Material: Phosphor bronze
- Thickness: 0.20
- Finish: Gold or Tin-Plated
- Q'ty/Reel: 10,000PCS

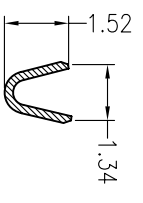
**Ordering Information**

T6211 - F C 0 P XX 01

- Contact Material
- B=Brass
- P=Phosphor bronze
- Contact Plating
- G0=Gold Flash
- G1=3u"Gold
- G2=5u"Gold
- G3=10u"Gold
- G4=15u"Gold
- G5=30u"Gold
- S0=Gold Flash/Tin
- S1=3u"Gold/Tin
- S2=5u"Gold/Tin
- S3=10u"Gold/Tin
- S4=15u"Gold/Tin
- S5=30u"Gold/Tin
- SN=Tin



Section A-A



Section B-B

OPERATION		DRAW		SCALE		PART NO.	
X.X	±0.30	<i>William Chen</i>		1:1	A4		WCON 维峰五金电子有限公司
X.XX	±0.25	DESIGN		mm	1/1		WAPE HARDWARE ELECTRONICS CO. LTD
X.XXX	±0.15	CHECK			SHEET		T6211-FC0PXX01
Angle	± 3'	APPROVE			PROJ.		HD-SUB CONNECTOR CRIMP TYPE FEMALE TERMINAL
DATE	MODIFICATION DESCRIPTION	CHANGE	APPROVE			Customer NO.	
A0	NEW						
REV	DATE	MODIFICATION DESCRIPTION	CHANGE	APPROVE			