



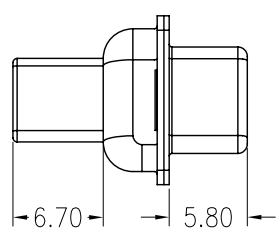
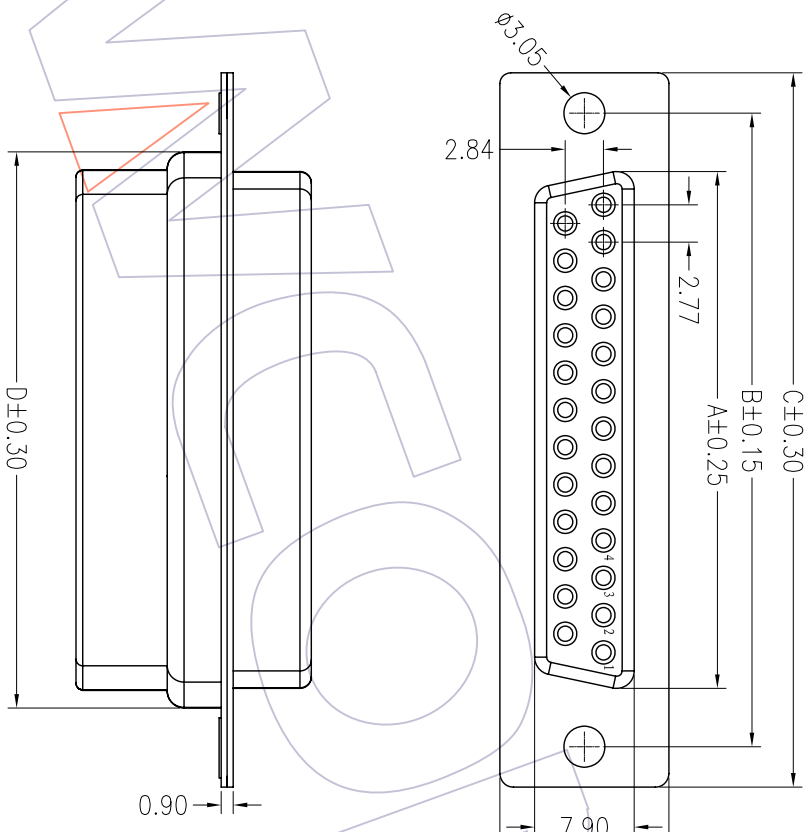
**NOTES:**

Rated Current:3.0AMP  
 Contact Resistance:20mΩ max  
 Withstand Voltage:500V AC/Minute  
 Insulation Resistance:1000MΩ min  
 Operation Temperature:-55℃ to +105℃  
 Insulator Material:PBT+30%G.F UL94V-0  
 Sheel: Cold Roller Steel, Ni Plated

**Ordering Information**

6221-XX F N XX X 01

No. of Pins Type Contact Plating Insulator Color  
 09,15,25,37P F=With Front Nut G0=Gold Flash B:Black  
 B=With Back Nut G1=3u"Gold W:White  
 Y=With Back Fork G2=5u"Gold U:Blue  
 N=Without Nut G3=10u"Gold G:Grey  
 And Fork G4=15u"Gold  
 G5=30u"Gold  
 S0=Gold Flash/Tin  
 S1=3u"Gold/Tin  
 S2=5u"Gold/Tin  
 S3=10u"Gold/Tin  
 S4=15u"Gold/Tin  
 S5=30u"Gold/Tin  
 SN=Tin



No. of Positions	DIM "A"	DIM "B"	DIM "C"	DIM "D"
09	16.33	24.99	30.81	19.28
15	24.66	33.32	39.14	27.65
25	38.38	47.04	53.04	41.30
37	54.84	63.50	69.32	57.44

**WCON** 维峰五金电子有限公司  
 WAFE HARDWARE ELECTRONICS CO. LTD

OPERATION	DRAW	SCALE	PART NO.
X.X	<i>William Chen</i>	1:1	6221-XXFNXXX01
X.XX	DESIGN	UNIT	
±0.30		mm	
±0.25	CHECK	SIZE	
±0.15		A4	
Angle	APPROVE	SHEET	TITLE: D-SUB FEMALE DIAL ROW CRIMP TYPE
± 3'		1/1	
DIM TOL	PROJ.	Customer NO.	

REV	DATE	MODIFICATION DESCRIPTION	CHANGE	APPROVE
A0	09/03/07	NEW		