

HSF

NOTES:

Rated Current:0.4AMP
 Contact Resistance:20mΩ max
 Withstand Voltage:200V AC/DC
 Insulation Resistance:500MΩ min
 Operation Temperature:-25℃ to +85℃

Terminal:Phosphor Bronze Tin-Leadplated
 Fattig Nail:Brass Tin-Leadplated
 Housing:Thermoplastic UL94V-0
 Slider:Thermoplastic UL94V-0

Ordering Information

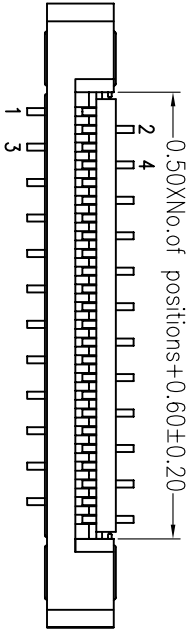
5140-XX S M X W X XX

No. of Pins
04-60P

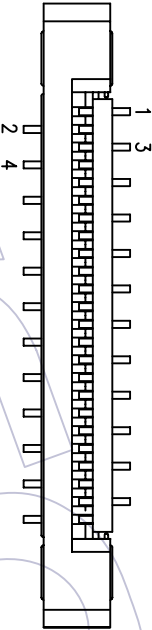
Contact Type
U=Up contact
B=Bottom contact

Color
A=Brown
B=Black
W=White
F=Beige

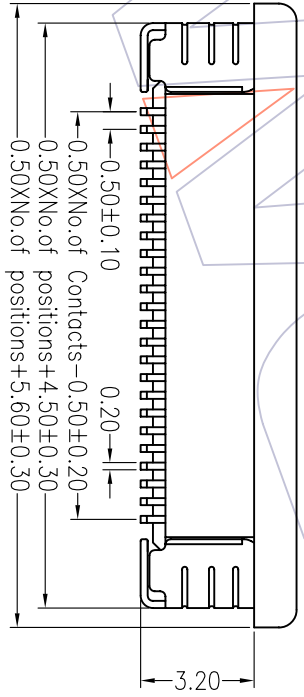
Type
01: Type 1
02: Type 2



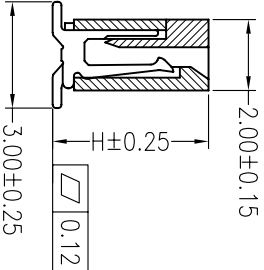
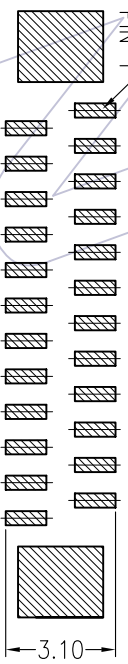
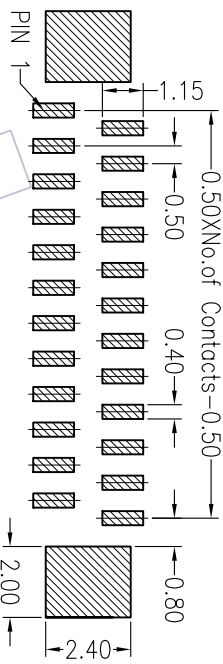
TYPE 2



TYPE 1



Recommended P.C.B Layout(Top Side)
 (PCB BOARD TOLERANCE±0.05)



No. of Pins	Dim"H"
04-34P	4.40
35-60P	4.90

TYPE	PART NO.
TYPE 1	5140-XXSMXWX01
TYPE 2	5140-XXSMXWX02

WCON 维峰五金电子有限公司
 WAVE HARDWARE ELECTRONICS CO. LTD

OPERATION	DRAW	SCALE
X.X	William Chen	1:1
X.XX	DESIGN	UNIT
X.XXX	CHECK	SIZE
Angle	APPROVE	SHEET
DIM		PROJ.

REV	DATE	MODIFICATION DESCRIPTION	CHANGE	APPROVE
A0	09/02/18	NEW		

SBE TAB

0.50 PFC 180° SMT SINGLE CONTACT WITH LOCK