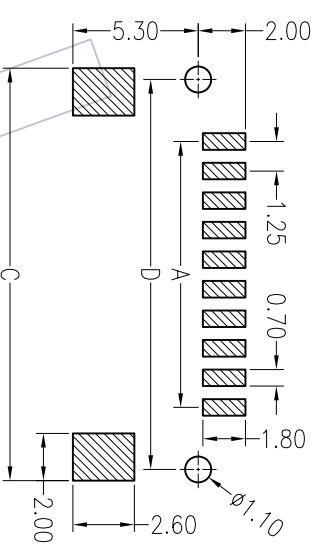
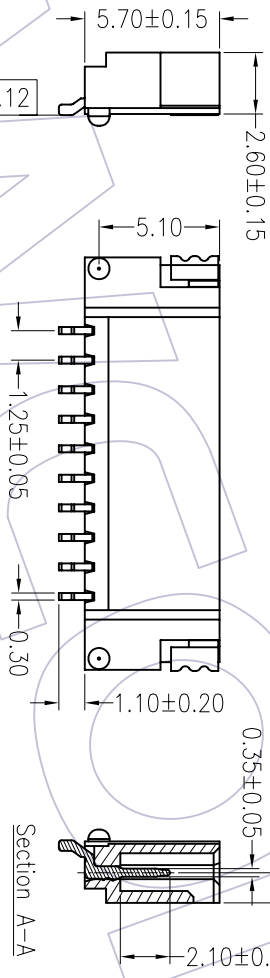
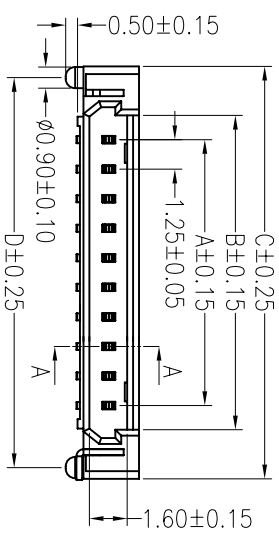




NOTES:

- Current Rating:1.0AMP
- Contact Resistance:20mΩ max
- Withstand Voltage:500V AC/DC
- Insulation Resistance:500MΩ min
- Operation Temperature:-40°C to +85°C
- Contact Material:Brass
- Contact plating:Au or Sn Over Ni
- Insulator Material:PA6T+30%G.F UL94V-0



Ordering Information

WF 1255 - WZ XX X T 1

No. of pins
02-30pin

Color
B=Beige
W=White

Packing
T=Tube
R= Tape&Reel

Circuit	Part No.	Dimension				Qty /Tube
		A	B	C	D	
21	WF1255-WZ21XT1	25.00	27.05	31.20	30.25	18
22	WF1255-WZ22XT1	26.25	28.30	32.45	31.50	17
23	WF1255-WZ23XT1	27.50	29.55	33.70	32.75	17
24	WF1255-WZ24XT1	28.75	30.80	34.95	34.00	16
25	WF1255-WZ25XT1	30.00	32.05	36.20	35.25	16
26	WF1255-WZ26XT1	31.25	33.30	37.45	36.50	15
27	WF1255-WZ27XT1	32.50	34.55	38.70	37.75	14
28	WF1255-WZ28XT1	33.75	35.80	39.95	39.00	14
29	WF1255-WZ29XT1	35.00	37.05	41.20	40.25	14
30	WF1255-WZ30XT1	36.25	38.30	42.45	41.50	13

Specification & Ordering Information:

Circuit	Part No.	Dimension				Qty /Tube
		A	B	C	D	
02	WF1255-WZ02XT1	1.25	3.30	7.45	6.50	77
03	WF1255-WZ03XT1	2.50	4.55	8.70	7.75	66
04	WF1255-WZ04XT1	3.75	5.80	9.95	9.00	58
05	WF1255-WZ05XT1	5.00	7.05	11.20	10.25	51
06	WF1255-WZ06XT1	6.25	8.30	12.45	11.50	46
07	WF1255-WZ07XT1	7.50	9.55	13.70	12.75	42
08	WF1255-WZ08XT1	8.75	10.80	14.95	14.00	38
09	WF1255-WZ09XT1	10.00	12.05	16.20	15.25	35
10	WF1255-WZ10XT1	11.25	13.30	17.45	16.50	33
11	WF1255-WZ11XT1	12.50	14.55	18.70	17.75	31
12	WF1255-WZ12XT1	13.75	15.80	19.95	19.00	29
13	WF1255-WZ13XT1	15.00	17.05	21.20	20.25	27
14	WF1255-WZ14XT1	16.25	18.30	22.45	21.50	26
15	WF1255-WZ15XT1	17.50	19.55	23.70	22.75	24
16	WF1255-WZ16XT1	18.75	20.80	24.95	24.00	23
17	WF1255-WZ17XT1	20.00	22.05	26.20	25.25	22
18	WF1255-WZ18XT1	21.25	23.30	27.45	26.50	21
19	WF1255-WZ19XT1	22.50	24.55	28.70	27.75	20
20	WF1255-WZ20XT1	23.75	25.80	29.95	29.00	19

WCON 维峰五金电子有限公司
WAVE HARDWARE ELECTRONICS CO. LTD

OPERATION	X.X	±0.40	DRAW	William Chau	08.07.19	SCALE	1:1
DESIGN	X.XX	±0.25	UNIT			mm	
CHECK	X.XXX	±0.15	SIZE			A4	
APPROVE	Angle	± 3'	SHEET			1/1	
APPROVE	DIM	TOL	PROJ.				

REV	DATE	MODIFICATION DESCRIPTION	CHANGE	APPROVE
A0	08/07/19	NEW		

PART NO. WF1255-WZXXXX1

TITLE: 1.25 WATER 90° SMT (HRS DF-14)

Customer NO.