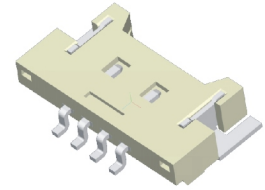
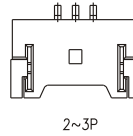
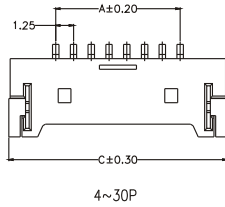


# WCON<sup>®</sup> Wafer/Housing Connector

HTTP:WWW.WAFE-CHINA.COM

## WAFER

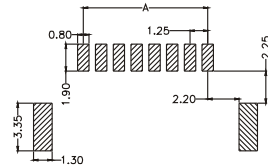
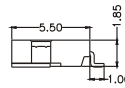
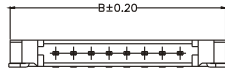
Current Rating:1.25AMP  
 Contact Resistance:20m Ω Max.  
 Insulation Resistance:500M Ω Min.  
 Withstanding Voltage :500V AC/Minute  
 Operation Temperature: -25°C to+85°C  
 Contact Material:Brass  
 Contact plating:Gold/Tin Over Ni  
 Insulator Material:Polyester (UL94V-0)  
 Standard:PA6T



WF1254-WMXXET1

Circuit	Part No.	Dimension			Qty /Reel
		A	B	C	
02	WF1254-W202XR1	1.25	7.65	7.85	2,000
03	WF1254-W203SR1	2.50	8.90	9.10	2,000
04	WF1254-W204SR1	3.75	10.15	10.35	2,000
05	WF1254-W205SR1	5.00	11.40	11.60	2,000
06	WF1254-W206SR1	6.25	12.65	12.85	2,000
07	WF1254-W207SR1	7.50	13.90	14.10	2,000
08	WF1254-W208SR1	8.75	15.15	15.35	2,000
09	WF1254-W209SR1	10.00	16.40	16.60	2,000
10	WF1254-W210SR1	11.25	17.65	17.85	2,000
11	WF1254-W211SR1	12.50	18.90	19.10	2,000
12	WF1254-W212SR1	13.75	20.15	20.35	2,000
13	WF1254-W213SR1	15.00	21.40	21.60	2,000
14	WF1254-W214SR1	16.25	22.65	22.85	2,000
15	WF1254-W215SR1	17.50	23.90	24.10	2,000
16	WF1254-W216SR1	18.75	25.15	25.35	2,000
17	WF1254-W217SR1	20.00	26.40	26.60	2,000
18	WF1254-W218SR1	21.25	27.65	27.85	2,000
19	WF1254-W219SR1	22.50	28.90	29.10	2,000
20	WF1254-W220SR1	23.75	30.15	30.35	2,000
30	WF1254-W230SR1	36.25	42.65	42.85	2,000

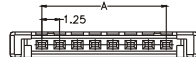
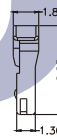
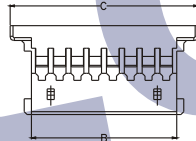
WF1254-WM XX E T1  
 NO.OF Pins



## HOUSING

Insulator Material:Polyester (UL94V-0)  
 Standard:PA66  
 Use with :WF1254-T(Crimple Terminal)  
 Mated with :WF1254-Wafer

WF1254-H XX W O1  
 NO.OF Pins

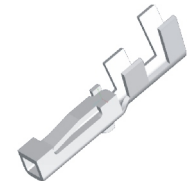
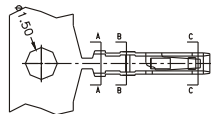


WF1254-HXXW01

Circuit	Part No.	Dimension			Qty /Reel
		A	B	C	
02	WF1254-H02X01	1.25	2.72	5.72	1,000
03	WF1254-H03X01	2.50	3.97	6.97	1,000
04	WF1254-H04X01	3.75	5.22	8.22	1,000
05	WF1254-H05X01	5.00	6.47	9.47	1,000
06	WF1254-H06X01	6.25	7.72	10.72	1,000
07	WF1254-H07X01	7.50	8.97	11.97	1,000
08	WF1254-H08X01	8.75	10.22	13.22	1,000
09	WF1254-H09X01	10.00	11.47	14.47	1,000
10	WF1254-H10X01	11.25	12.72	15.72	1,000
11	WF1254-H11X01	12.50	13.97	16.97	1,000
12	WF1254-H12X01	13.75	15.22	18.22	1,000
13	WF1254-H13X01	15.00	16.47	19.47	1,000
14	WF1254-H14X01	16.25	17.72	20.72	1,000
15	WF1254-H15X01	17.50	18.97	21.97	1,000
16	WF1254-H16X01	18.75	20.22	23.22	1,000
17	WF1254-H17X01	20.00	21.47	24.47	1,000
18	WF1254-H18X01	21.25	22.72	25.72	1,000
19	WF1254-H19X01	22.50	23.97	26.97	1,000
20	WF1254-H20X01	23.75	25.22	28.22	1,000
30	WF1254-H30X01	36.25	37.72	40.72	1,000

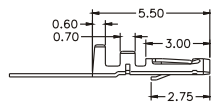
## TERMINAL

Material:Phosphor Bronze  
 Contact plating: Sn Over Ni  
 Insulation O.D.:0.90mm (Max.)  
 Wire Range:AWG#28~#32



WF1254-TPSN01

WF1254-T P SN 01



※ INNOVATION AND DEVELOPMENT ※ CONTINUAL IMPROVEMENT ※ QUALITY FOREMOST ※ CUSTOMER SATISFACTION ※

Http:www.wafe-china.com E-mail:sales@wafe-china.com

WAFE DONGGUAN FAX:+86 769 85358915 TEL:+86 769 85358920  
 WAFE KUNSHAN FAX:+86 512 57468468 TEL:+86 512 57468418