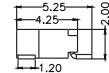
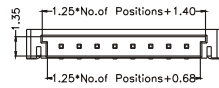
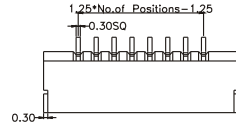


# WCON<sup>®</sup> Wafer/Housing Connector

HTTP:WWW.WAFE-CHINA.COM

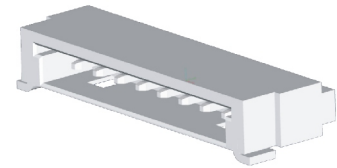
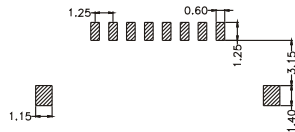
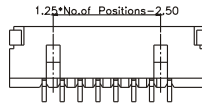
## WAFER

Current Rating:1.0AMP  
 Contact Resistance:20m Ω Max.  
 Insulation Resistance:500M Ω Min.  
 Withstanding Voltage :500V AC/Minute  
 Operation Temperature: -25°C to+85°C  
 Contact Material:Phosphor Bronze  
 Contact plating: Tin Over Ni  
 Insulator Material:Polyester (UL94V-0)  
 Standard:PA9T



WF1252-WR XX E 01

NO.OF Pins  
02~15pin



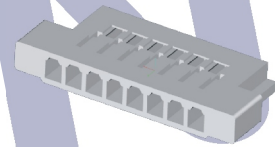
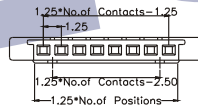
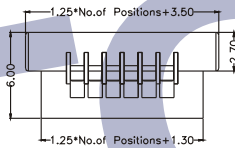
WF1252-WRXXE01

## HOUSING

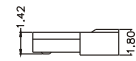
Insulator Material:Polyester (UL94V-0)  
 Standard:PBT  
 Use with :WF1252-T(Crimp Terminal)  
 Mated with :WF1252-Wafer

WF1252-H XX X 01

NO.OF Pins  
02~15pin



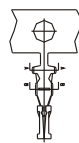
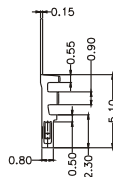
WF1252-HXXW01



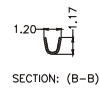
## TERMINAL

Material:Phosphor Bronze  
 Contact plating:Au or Sn Over Ni  
 Insulation O.D.:0.90mm (Max.)  
 Wire Range:AWG#28~#32

WF1252-T P SN 01



WF1252-TPSN01



※ INNOVATION AND DEVELOPMENT ※ CONTINUAL IMPROVEMENT ※ QUALITY FOREMOST ※ CUSTOMER SATISFACTION ※

Http:www.wafe-china.com E-mail:sales@wafe-china.com

WAFE DONGGUAN FAX:+86 769 85358915 TEL:+86 769 85358920  
 WAFE KUNSHAN FAX:+86 512 57468468 TEL:+86 512 57468418