

HSPF

TECHNICAL SPECS:

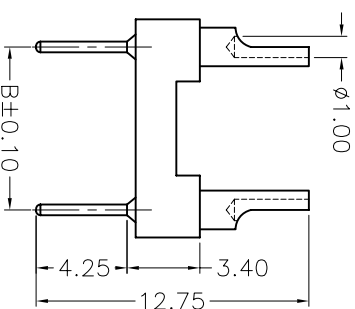
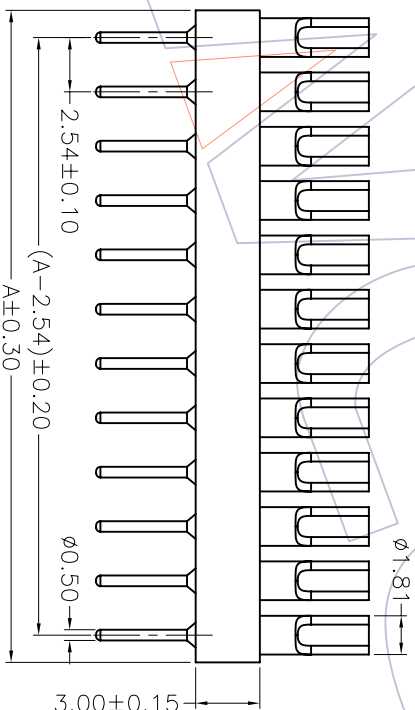
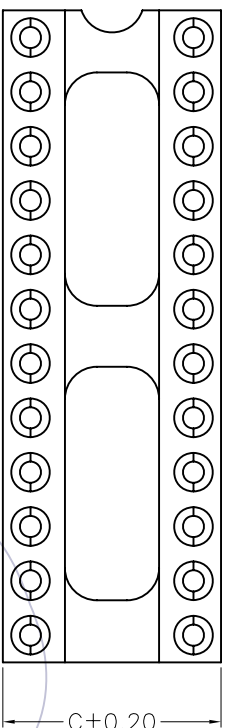
Current Rating: 1.0AMP
 Contact Resistance: 10mΩ Max
 Dielectric Strength: Min 1000Vrms
 Mechanical Life: Min 100 cycles
 Connecting Pin: φ0.50mm
 Operation Temperature: -40°C to +105°C

Sleeve: Brass CuZn36Pb3(C360000)
 Contact plating: Au or Sn over Ni
 Insulator Material: PPS+30%G.F(Ul94V-0)
 06P~16P Insulators without center bar
 36P~52P Insulators with center two bar
 64P Insulators with center three bar

Ordering Information

3568-30X XX S XX 127 X 1

Row of Pitch No. of Pin Contact Plating Packing
 1=7.62mm See tab G0=Gold Flash T=Tube
 2=15.24mm G1=3u"Gold A=Tray
 3=10.16mm G2=5u"Gold
 5=22.86mm G3=10u"Gold
 G4=15u"Gold
 G5=30u"Gold
 S0=Gold Flash/Tin
 S1=3u"Gold/Tin
 S2=5u"Gold/Tin
 S3=10u"Gold/Tin
 S4=15u"Gold/Tin
 S5=30u"Gold/Tin
 SN=Tin



Dimensional & Ordering Information

No. of Poles	Part No.	Dimension		
		A	B	C
06	3568-30106SX127X1	7.62	7.62	10.20
08	3568-30108SX127X1	10.16	7.62	10.20
10	3568-30110SX127X1	12.70	7.62	10.20
12	3568-30112SX127X1	15.24	7.62	10.20
14	3568-30114SX127X1	17.78	7.62	10.20
16	3568-30116SX127X1	20.32	7.62	10.20
18	3568-30118SX127X1	22.86	7.62	10.20
20	3568-30120SX127X1	25.40	7.62	10.20
22	3568-30122SX127X1	27.94	7.62	10.20
24	3568-30124SX127X1	30.48	7.62	10.20
28	3568-30128SX127X1	35.56	7.62	10.20
20	3568-30320SX127X1	25.40	10.16	12.70
22	3568-30322SX127X1	27.94	10.16	12.70
24	3568-30324SX127X1	30.48	10.16	12.70
28	3568-30328SX127X1	35.56	10.16	12.70
32	3568-30332SX127X1	40.64	10.16	12.70
24	3568-30224SX127X1	30.48	15.24	17.80
28	3568-30228SX127X1	35.56	15.24	17.80
32	3568-30232SX127X1	40.64	15.24	17.80
36	3568-30236SX127X1	45.72	15.24	17.80
40	3568-30240SX127X1	50.80	15.24	17.80
42	3568-30242SX127X1	53.34	15.24	17.80
48	3568-30248SX127X1	60.96	15.24	17.80
50	3568-30250SX127X1	63.50	15.24	17.80
52	3568-30252SX127X1	66.04	15.24	17.80
50	3568-30550SX127X1	63.50	22.86	25.40
52	3568-30552SX127X1	66.04	22.86	25.40
64	3568-30564SX127X1	81.28	22.86	25.40

WCON 维峰五金电子有限公司
 WAVE HARDWARE ELECTRONICS CO. LTD

SEE TAB

2.54mm MACHINED ADAPTER CONNECTOR FOR WIRING
 SOLDER TAIL TYPE 180° H=3.0 L=12.75

REV	DATE	MODIFICATION DESCRIPTION	CHANGE APPROVE	OPERATION	DRAW	WEIXD	SCALE	PART NO.
A0	08/10/22	NEW		X.X X.XX X.XXX	DESIGN CHECK	08/10/22	1:1 mm	
1				Angle DIM	CHECK APPROVE		UNIT SIZE	TITLE: Customer NO.
				± 3'			A4	
				TOL			1/1	
							PROJ.	