

HSPF

TECHNICAL SPECS:

Current Rating: 1.0AMP
 Contact Resistance: 10mΩ Max
 Dielectric Strength: Min 1000Vrms
 Mechanical Life: Min 100 cycles
 Connecting Pin: 0.47mm
 Operation Temperature: -40°C to +105°C

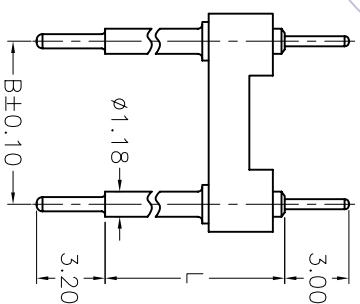
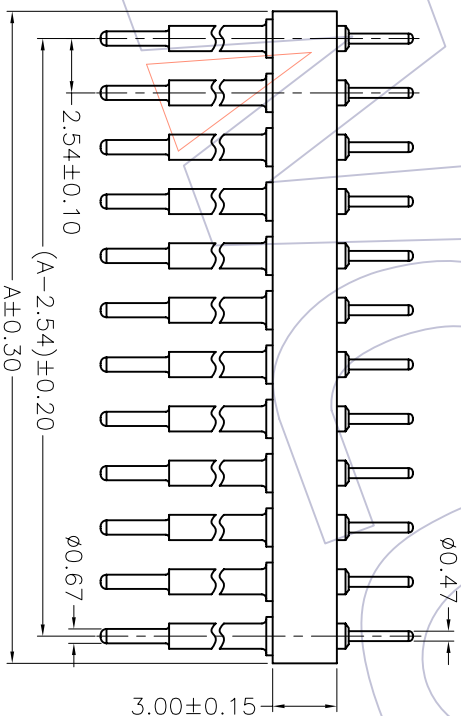
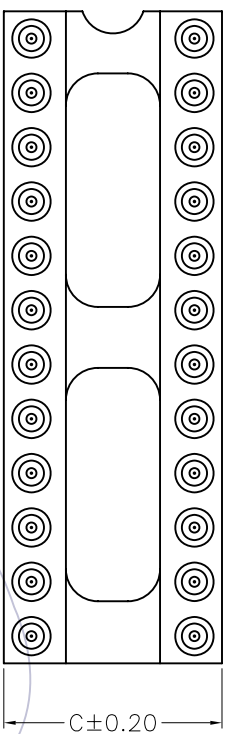
Sleeve: Brass CuZn36Pb3(C360000)
 Contact plating: Au or Sn over Ni
 Insulator Material: PPS+30%G.F(UL94V-0)
 06P~16P Insulators without center bar
 36P~52P Insulators with center two bar
 64P Insulators with center three bar

Ordering Information

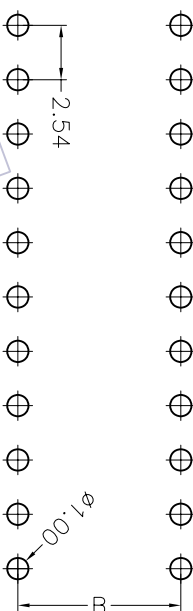
3560-30X XX S XX XXX X 1

Row of Pitch	No. of Pin	Contact Plating	Pin Long	Packing
1=7.62mm	See tab	G0=Gold Flash	124=12.4mm	T=Tube
2=15.24mm		G1=3u"Gold	146=14.6mm	A=Tray
3=10.16mm		G2=5u"Gold	215=21.5mm	
5=22.86mm		G3=10u"Gold	274=27.4mm	
		G4=15u"Gold	336=33.6mm	
		G5=30u"Gold		
		S0=Gold Flash/Tin		
		S1=3u"Gold/Tin		
		S2=5u"Gold/Tin		
		S3=10u"Gold/Tin		
		S4=15u"Gold/Tin		
		S5=30u"Gold/Tin		
		SN=Tin		

Row of Pitch No. of Pin Contact Plating Pin Long Packing
 1=7.62mm See tab G0=Gold Flash 124=12.4mm T=Tube
 2=15.24mm G1=3u"Gold 146=14.6mm A=Tray
 3=10.16mm G2=5u"Gold 215=21.5mm
 5=22.86mm G3=10u"Gold 274=27.4mm
 G4=15u"Gold 336=33.6mm
 G5=30u"Gold
 S0=Gold Flash/Tin
 S1=3u"Gold/Tin
 S2=5u"Gold/Tin
 S3=10u"Gold/Tin
 S4=15u"Gold/Tin
 S5=30u"Gold/Tin
 SN=Tin



Pin Long	Dim"l"	Pin Long	Dim"l"
Code:XXX	Code:XXX	Code:XXX	Code:XXX
124	6.20	274	21.20
146	8.40	336	27.40
215	15.30		



Dimensional & Ordering Information

NO. of Poles	Part No.	Dimension		
		A	B	C
06	3560-30106SXXXXXX1	7.62	7.62	10.20
08	3560-30108SXXXXXX1	10.16	7.62	10.20
10	3560-30110SXXXXXX1	12.70	7.62	10.20
12	3560-30112SXXXXXX1	15.24	7.62	10.20
14	3560-30114SXXXXXX1	17.78	7.62	10.20
16	3560-30116SXXXXXX1	20.32	7.62	10.20
18	3560-30118SXXXXXX1	22.86	7.62	10.20
20	3560-30120SXXXXXX1	25.40	7.62	10.20
22	3560-30122SXXXXXX1	27.94	7.62	10.20
24	3560-30124SXXXXXX1	30.48	7.62	10.20
28	3560-30128SXXXXXX1	35.56	7.62	10.20
20	3560-30320SXXXXXX1	25.40	10.16	12.70
22	3560-30322SXXXXXX1	27.94	10.16	12.70
24	3560-30324SXXXXXX1	30.48	10.16	12.70
28	3560-30328SXXXXXX1	35.56	10.16	12.70
32	3560-30332SXXXXXX1	40.64	10.16	12.70
24	3560-30224SXXXXXX1	30.48	15.24	17.80
28	3560-30228SXXXXXX1	35.56	15.24	17.80
32	3560-30232SXXXXXX1	40.64	15.24	17.80
36	3560-30236SXXXXXX1	45.72	15.24	17.80
40	3560-30240SXXXXXX1	50.80	15.24	17.80
42	3560-30242SXXXXXX1	53.34	15.24	17.80
48	3560-30248SXXXXXX1	60.96	15.24	17.80
50	3560-30250SXXXXXX1	63.50	15.24	17.80
52	3560-30252SXXXXXX1	66.04	15.24	17.80
50	3560-30550SXXXXXX1	63.50	22.86	25.40
52	3560-30552SXXXXXX1	66.04	22.86	25.40
64	3560-30564SXXXXXX1	81.28	22.86	25.40

WCON 维峰五金电子有限公司
 WAVE HARDWARE ELECTRONICS CO. LTD

SEE TAB

2.54mm MACHINED ADAPTER CONNECTOR
 180° H=3.0 L=XXXX

OPERATION	DRAW	WEIXD	SCALE	PART NO.
X.X ±0.30	DESIGN	08/10/22	1:1	
X.XX ±0.25	CHECK		UNIT	mm
X.XXX ±0.15	CHECK		SIZE	A4
Angle ± 3'	APPROVE		SHEET	1/1
DIM TOL	APPROVE		PROJ.	Customer NO.

REV	DATE	MODIFICATION DESCRIPTION	CHANGE	APPROVE
A0	08/10/22	NEW		
1				