

HSPF

TECHNICAL SPECS:

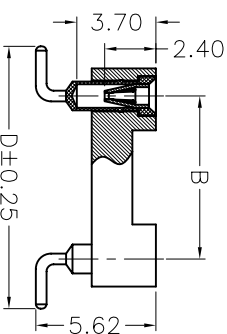
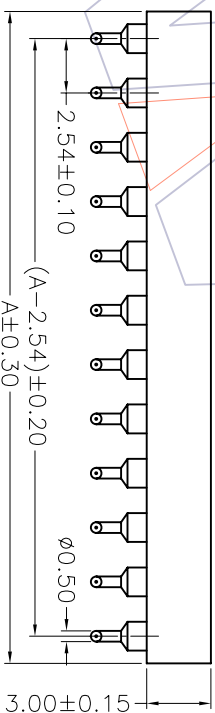
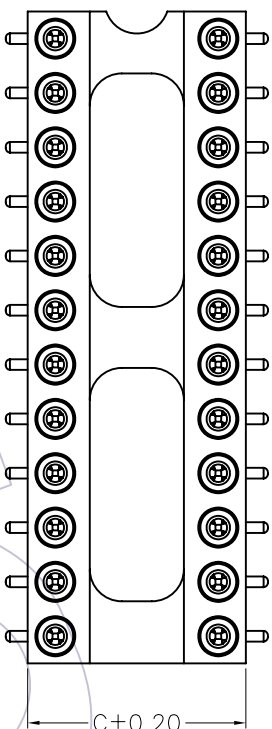
Current Rating:1.0AMP
 Contact Resistance:10mΩ Max
 Dielectric Strength: Min 1000Vrms
 Mechanical Life: Min 100 cycles
 Mating Pin:φ0.40 to φ0.56mm
 Forces: (polished steel gauge φ0.43mm)
 -Insertion:2N typ. -Withdrawal:1N typ.
 Operation Temperature:-40°C to +105°C

Sleeve:Brass CuZn36Pb3(C36000)
 Contact Clip(4 finger):BeCu(C17200)
 Contact plating:Au or Sn over Ni
 Insulator Material:PPS+30%G.F.(UL94V-0)
 06P~16P Insulators without center bar
 36P~48P Insulators with center two bar

Ordering Information

7110-30X XX M XX 074 X 1

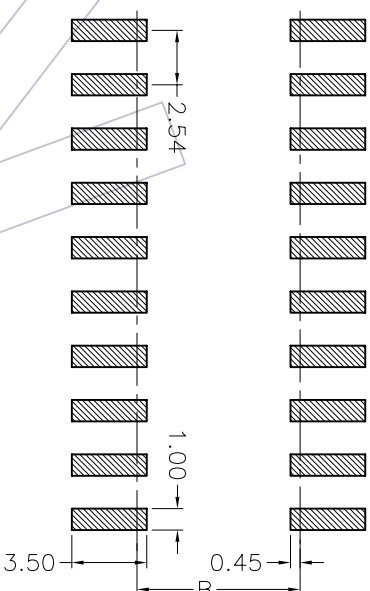
Row of Pitch No. of Pin Contact Plating Packaging
 1=7.62mm See tab G0=Gold Flash T=Tube
 2=15.24mm G1=3u"Gold R=Tape&Reel
 3=10.16mm G2=5u"Gold
 G3=10u"Gold
 G4=15u"Gold
 G5=30u"Gold
 S0=Gold Flash/Tin
 S1=3u"Gold/Tin
 S2=5u"Gold/Tin
 S3=10u"Gold/Tin
 S4=15u"Gold/Tin
 S5=30u"Gold/Tin
 SN=Tin



Dimensional & Ordering Information

NO. of Poles	Part No.	Dimension			
		A	B	C	D
06	7110-30106MXX074X1	7.62	7.62	10.20	12.26
08	7110-30108MXX074X1	10.16	7.62	10.20	12.26
10	7110-30110MXX074X1	12.70	7.62	10.20	12.26
14	7110-30114MXX074X1	17.78	7.62	10.20	12.26
16	7110-30116MXX074X1	20.32	7.62	10.20	12.26
18	7110-30118MXX074X1	22.86	7.62	10.20	12.26
20	7110-30120MXX074X1	25.40	7.62	10.20	12.26
22	7110-30122MXX074X1	27.94	7.62	10.20	12.26
24	7110-30124MXX074X1	30.48	7.62	10.20	12.26
28	7110-30128MXX074X1	35.56	7.62	10.20	12.26
20	7110-30320MXX074X1	25.40	10.16	12.70	14.80
22	7110-30322MXX074X1	27.94	10.16	12.70	14.80
24	7110-30324MXX074X1	30.48	10.16	12.70	14.80
28	7110-30328MXX074X1	35.56	10.16	12.70	14.80
32	7110-30332MXX074X1	40.64	10.16	12.70	14.80
24	7110-30224MXX074X1	30.48	15.24	17.80	19.88
28	7110-30228MXX074X1	35.56	15.24	17.80	19.88
32	7110-30232MXX074X1	40.64	15.24	17.80	19.88
36	7110-30236MXX074X1	45.72	15.24	17.80	19.88
40	7110-30240MXX074X1	50.80	15.24	17.80	19.88
42	7110-30242MXX074X1	53.34	15.24	17.80	19.88
48	7110-30248MXX074X1	60.96	15.24	17.80	19.88

Recommended P.C.B Layout(Top Side)
 (PCB BOARD TOLERANCE±0.05)



WCON 维峰五金电子有限公司
 WAVE HARDWARE ELECTRONICS CO. LTD

S&E TAB

2.54mm IC SOCKET SMT H=3.0 L=7.4

REV	DATE	MODIFICATION DESCRIPTION	CHANGE	APPROVE	OPERATION	DRAW	WEIXD	SCALE	UNIT	PART NO.
A0	08/10/22	NEW			XXX ±0.30 XXX ±0.25 XXX ±0.15	DESIGN	08/10/22	1:1	mm	
REV	DATE	MODIFICATION DESCRIPTION	CHANGE	APPROVE	Angle ±.3° DIM TOL	CHECK				TITLE: Customer NO.