

HSPF

TECHNICAL SPECS:

Current Rating: 1.0AMP
 Contact Resistance: 10mΩ Max
 Dielectric Strength: Min 1000Vrms
 Mechanical Life: Min 100 cycles
 Mating Pin: $\phi 0.40$ to $\phi 0.56$ mm
 Forces: (polished steel gauge $\phi 0.43$ mm)
 -Insertion: 2N typ. -Withdrawal: 1N typ.
 Operation Temperature: -40°C to $+105^{\circ}\text{C}$

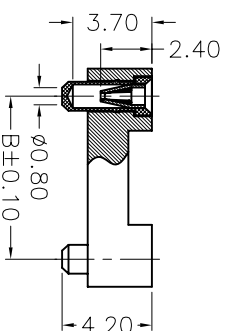
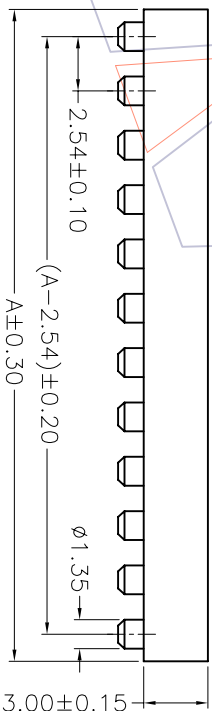
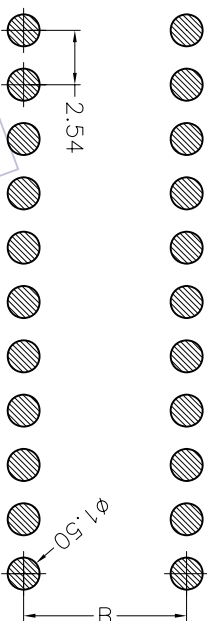
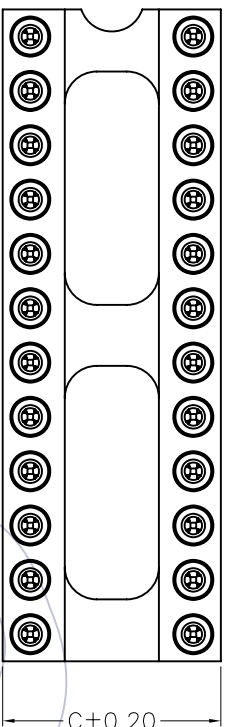
Sleeve: Brass CuZn36Pb3(C36000)
 Contact Clip(4 finger): BeCu(C17200)
 Contact plating: Au or Sn over Ni
 Insulator Material: PPS+30%G.F(UL94V-0)
 06P~16P Insulators without center bar
 36P~48P Insulators with center two bar

Ordering Information

7110-30XX XX M XX 042 X 1

Row of Pitch No. of Pin Contact Plating
 1=7.62mm See tab G0=Gold Flash
 2=15.24mm G1=3u"Gold
 3=10.16mm G2=5u"Gold
 G3=10u"Gold
 G4=15u"Gold
 G5=30u"Gold
 S0=Gold Flash/Tin
 S1=3u"Gold/Tin
 S2=5u"Gold/Tin
 S3=10u"Gold/Tin
 S4=15u"Gold/Tin
 S5=30u"Gold/Tin
 SN=Tin

Packing
 T=Tube
 R=Tray&Reel



Dimensional & Ordering Information

No. of Poles	Part No.	Dimension		
		A	B	C
06	7110-30106MXX042X1	7.62	7.62	10.20
08	7110-30108MXX042X1	10.16	7.62	10.20
10	7110-30110MXX042X1	12.70	7.62	10.20
14	7110-30114MXX042X1	17.78	7.62	10.20
16	7110-30116MXX042X1	20.32	7.62	10.20
18	7110-30118MXX042X1	22.86	7.62	10.20
20	7110-30120MXX042X1	25.40	7.62	10.20
22	7110-30122MXX042X1	27.94	7.62	10.20
24	7110-30124MXX042X1	30.48	7.62	10.20
28	7110-30128MXX042X1	35.56	7.62	10.20
20	7110-30320MXX042X1	25.40	10.16	12.70
22	7110-30322MXX042X1	27.94	10.16	12.70
24	7110-30324MXX042X1	30.48	10.16	12.70
28	7110-30328MXX042X1	35.56	10.16	12.70
32	7110-30332MXX042X1	40.64	10.16	12.70
24	7110-30224MXX042X1	30.48	15.24	17.80
28	7110-30228MXX042X1	35.56	15.24	17.80
32	7110-30232MXX042X1	40.64	15.24	17.80
36	7110-30236MXX042X1	45.72	15.24	17.80
40	7110-30240MXX042X1	50.80	15.24	17.80
42	7110-30242MXX042X1	53.34	15.24	17.80
48	7110-30248MXX042X1	60.96	15.24	17.80

WCON 维峰五金电子有限公司
 WAVE HARDWARE ELECTRONICS CO. LTD

SEE TAB

2.54mm IC SOCKET SMT H=3.0 L=4.2

OPERATION	DRAW	WEIXD	SCALE
X.X	DESIGN	08/10/22	1:1
X.XX	CHECK		mm
X.XXX	CHECK		A4
Angle			SHEET 1/1
DIM			PROJ.

REV	DATE	MODIFICATION DESCRIPTION	CHANGE APPROVE	APPROVE	TOL	APPROVE	CUSTOMER NO.
A0	08/10/22	NEW			±.3'		
1							