

HSPF

TECHNICAL SPECS:

Current Rating: 1.0AMP
 Contact Resistance: 10mΩ Max
 Dielectric Strength: Min 1000Vrms
 Mechanical Life: Min 100 cycles
 Mating Pin: $\varnothing 0.40$ to $\varnothing 0.56$ mm
 Forces: (polished steel gauge $\varnothing 0.43$ mm)
 -Insertion: 2N typ. -Withdrawal: 1N typ.
 Operation Temperature: -40°C to +105°C

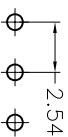
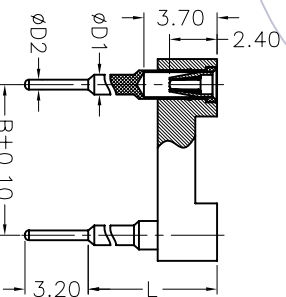
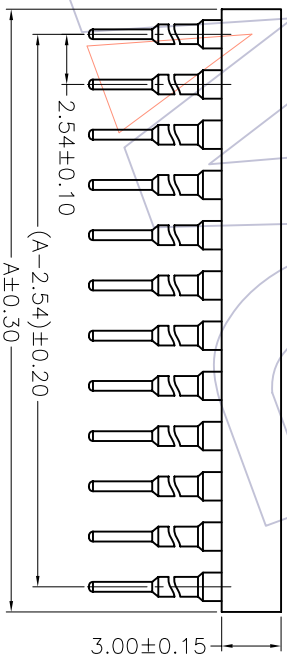
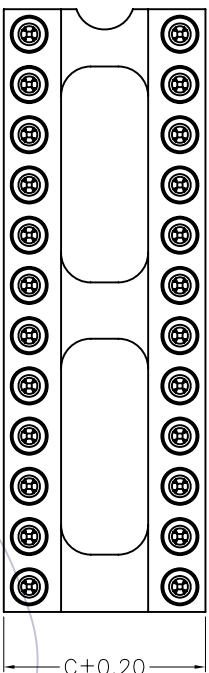
Sleeve: Brass CuZn36Pb3(C36000)
 Contact Clip: (4 finger): BeCu(C17200)
 Contact plating: Au or Sn over Ni

Insulator Material: PPS+30%G.F(UL94V-0)
 06P~16P Insulators without center bar
 36P~52P Insulators with center two bar
 64P Insulators with center three bar

Ordering Information

7110-30X XX S XX XXX X 1

Row of Pitch No. of Pin Contact Plating Pin Long Packing
 1=7.62mm See tab G0=Gold Flash 092=9.2mm T=Tube
 2=5.24mm G1=5u"Gold 102=10.2mm A=Tray
 3=10.16mm G2=5u"Gold 112=11.2mm
 G3=10u"Gold 122=12.2mm
 G4=5u"Gold 132=13.2mm
 G5=30u"Gold 142=14.2mm
 S0=Gold Flash/Tin 152=15.2mm
 S1=3u"Gold/Tin 162=16.2mm
 S2=5u"Gold/Tin 182=18.2mm
 S3=10u"Gold/Tin 212=21.2mm
 S4=15u"Gold/Tin 252=25.2mm
 S5=30u"Gold/Tin 362=36.2mm
 SN=Tim



Dimensional & Ordering Information

NO. of Poles	Part No.	Dimension		
		A	B	C
06	7110-30106SXXXXX1	7.62	7.62	10.20
08	7110-30108SXXXXX1	10.16	7.62	10.20
10	7110-30110SXXXXX1	12.70	7.62	10.20
12	7110-30112SXXXXX1	15.24	7.62	10.20
14	7110-30114SXXXXX1	17.78	7.62	10.20
16	7110-30116SXXXXX1	20.32	7.62	10.20
18	7110-30118SXXXXX1	22.86	7.62	10.20
20	7110-30120SXXXXX1	25.40	7.62	10.20
22	7110-30122SXXXXX1	27.94	7.62	10.20
24	7110-30124SXXXXX1	30.48	7.62	10.20
28	7110-30128SXXXXX1	35.56	7.62	10.20
20	7110-30320SXXXXX1	25.40	10.16	12.70
22	7110-30322SXXXXX1	27.94	10.16	12.70
24	7110-30324SXXXXX1	30.48	10.16	12.70
28	7110-30328SXXXXX1	35.56	10.16	12.70
32	7110-30332SXXXXX1	40.64	10.16	12.70
24	7110-30224SXXXXX1	30.48	15.24	17.80
28	7110-30228SXXXXX1	35.56	15.24	17.80
32	7110-30232SXXXXX1	40.64	15.24	17.80
36	7110-30236SXXXXX1	45.72	15.24	17.80
40	7110-30240SXXXXX1	50.80	15.24	17.80
42	7110-30242SXXXXX1	53.34	15.24	17.80
48	7110-30248SXXXXX1	60.96	15.24	17.80
50	7110-30250SXXXXX1	63.50	15.24	17.80
52	7110-30252SXXXXX1	66.04	15.24	17.80
50	7110-30650SXXXXX1	63.50	22.86	25.40
52	7110-30652SXXXXX1	66.04	22.86	25.40
64	7110-30664SXXXXX1	81.28	22.86	25.40

Pin Long Code:XXX	D1	D2	Pin Long Code:XXX	D1	D2
092	6.0	0.51	152	12.0	0.51
102	7.0	0.51	162	13.0	0.51
112	8.0	0.51	182	15.0	0.51
122	9.0	0.46	212	18.0	0.51
132	10.0	0.51	252	22.0	0.51
142	11.0	0.51	362	33.0	0.51

WCON 维峰五金电子有限公司
 WAVE HARDWARE ELECTRONICS CO. LTD

SCALE 1:1
 UNIT mm
 SIZE A4
 SHEET 1/1
 PART NO.
 TITLE:
 Customer NO.

SEE TAB

2.54mm IC SOCKET 180° H=3.0

REV	DATE	MODIFICATION DESCRIPTION	CHANGE APPROVE
A0	08/10/22	NEW	

OPERATION		DRAW		WEIXD		SCALE	
X.X	±0.30	DESIGN		08/10/22	1:1	UNIT	mm
X.XX	±0.25	CHECK				SIZE	A4
X.XXX	±0.15	APPROVE				SHEET	1/1
Angle	± 3'					TITLE:	
DIM	TOL					Customer NO.	

1 2 3 4 5 6 7 8 9 10

A B C D E F G H