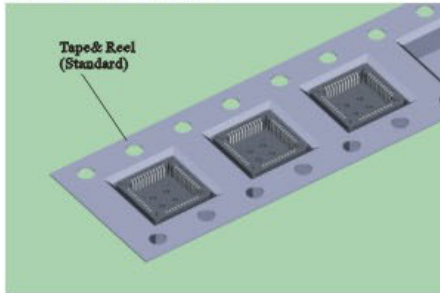


# PLCC Connector

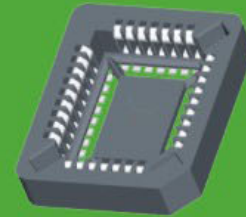
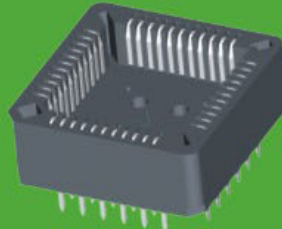
## SPECIFICATIONS



Current Rating: 1.0AMP  
 Contact Resistance: 20mΩ Max.  
 Insulation Resistance: 1000MΩ Min.  
 Withstanding Voltage : 1000V AC/Minute  
 Operation Temperature: -40°C to +105°C  
 Contact Material: Brass  
 Contact plating: Ag/Tin Over Ni Plated  
 Insulator Material: Polyester (UL94V-0)  
 StandArd: PPS+ 30%GF



7210-XXSXXX1



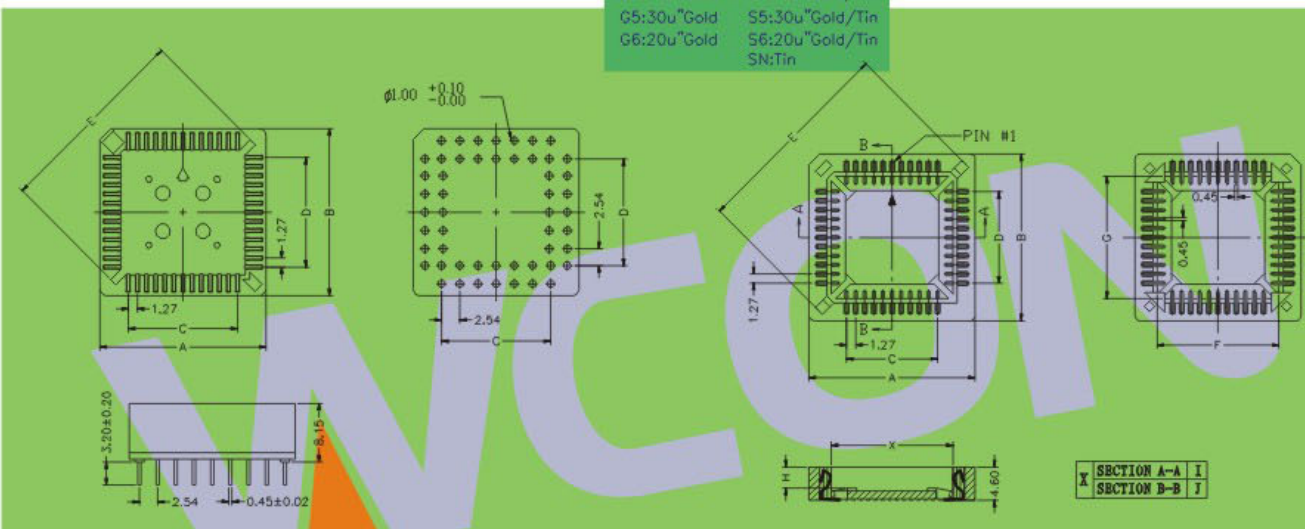
7210-XXMXXX1

## 7210-XX X XX X 1

**NO.OF PINS**  
**CONTACT SHAPE**  
 R: Straight  
 M: 180°SMT

**CONTACT PLATING**  
 G0: 1u" Gold S0: 1u" Gold/Tin  
 G1: 3u" Gold S1: 3u" Gold/Tin  
 G2: 5u" Gold S2: 5u" Gold/Tin  
 G3: 10u" Gold S3: 10u" Gold/Tin  
 G4: 15u" Gold S4: 15u" Gold/Tin  
 G5: 30u" Gold S5: 30u" Gold/Tin  
 G6: 20u" Gold S6: 20u" Gold/Tin  
 SN: Tin

**INSULATOR COLOUR**  
 A: Brown  
 B: Black



PIN. OF PIN	Dimension (mm)				
	A±0.20	B±0.20	C±0.20	D±0.20	B±0.20
20P	15.56	15.56	05.08	05.08	17.20
28P	18.10	18.10	07.62	07.62	20.70
32P	18.10	20.54	07.62	10.16	22.65
44P	23.18	23.18	12.70	12.70	27.50
52P	25.72	25.72	15.24	15.24	31.50
68P	30.80	30.80	20.32	20.32	39.00
84P	35.88	35.88	25.40	25.40	46.15

PIN	A	B	C	D	E	F	G	H	I	J
20	15.58	15.58	05.08	05.08	16.38	08.48	08.48	02.75	09.36	09.36
28	18.12	18.12	07.62	07.62	20.00	11.02	11.02	02.75	11.90	11.90
32	18.12	20.66	07.62	10.16	21.89	11.02	13.56	02.60	11.90	14.45
44	23.20	23.20	12.70	12.70	27.20	16.10	16.10	02.90	16.99	16.99
52	25.74	25.74	15.24	15.24	30.78	18.64	18.64	02.75	19.53	19.53
68	30.82	30.82	20.32	20.32	37.98	23.72	23.72	02.90	24.61	24.61
84	35.90	35.90	25.40	25.40	45.20	28.80	28.80	02.90	29.69	29.69

※ INNOVATION AND DEVELOPMENT ※ CONTINUAL IMPROVEMENT ※ QUALITY FOREMOST ※ CUSTOMER SATISFACTION ※

Http:www.wafe-china.com E-mail:sales@wafe-china.com

WAFE DONGGUAN FAX:+86 769 85358915 TEL:+86 769 85358920  
 WAFE KUNSHAN FAX:+86 512 57468468 TEL:+86 512 57468418