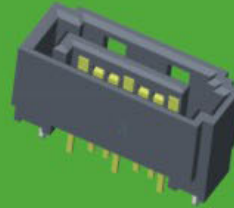
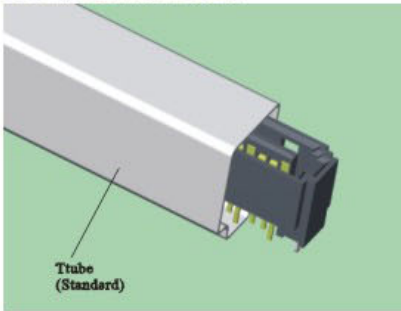


# SATA 7P Male Connector

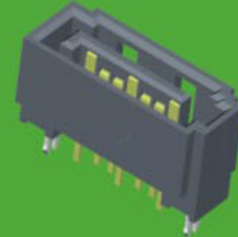
## SPECIFICATIONS



Current Rating: 1.5AMP  
 Contact Resistance: 30mΩ Max.  
 Insulation Resistance: 1000MΩ Min.  
 Withstanding Voltage : 500V AC/Minute  
 Operation Temperature: -55°C to +125°C  
 Contact Material: Brass  
 Contact plating: Au or Tin Over Ni  
 Insulator Material: Polyester (UL94V-0)  
 Standard: PA6T+ 30%GF



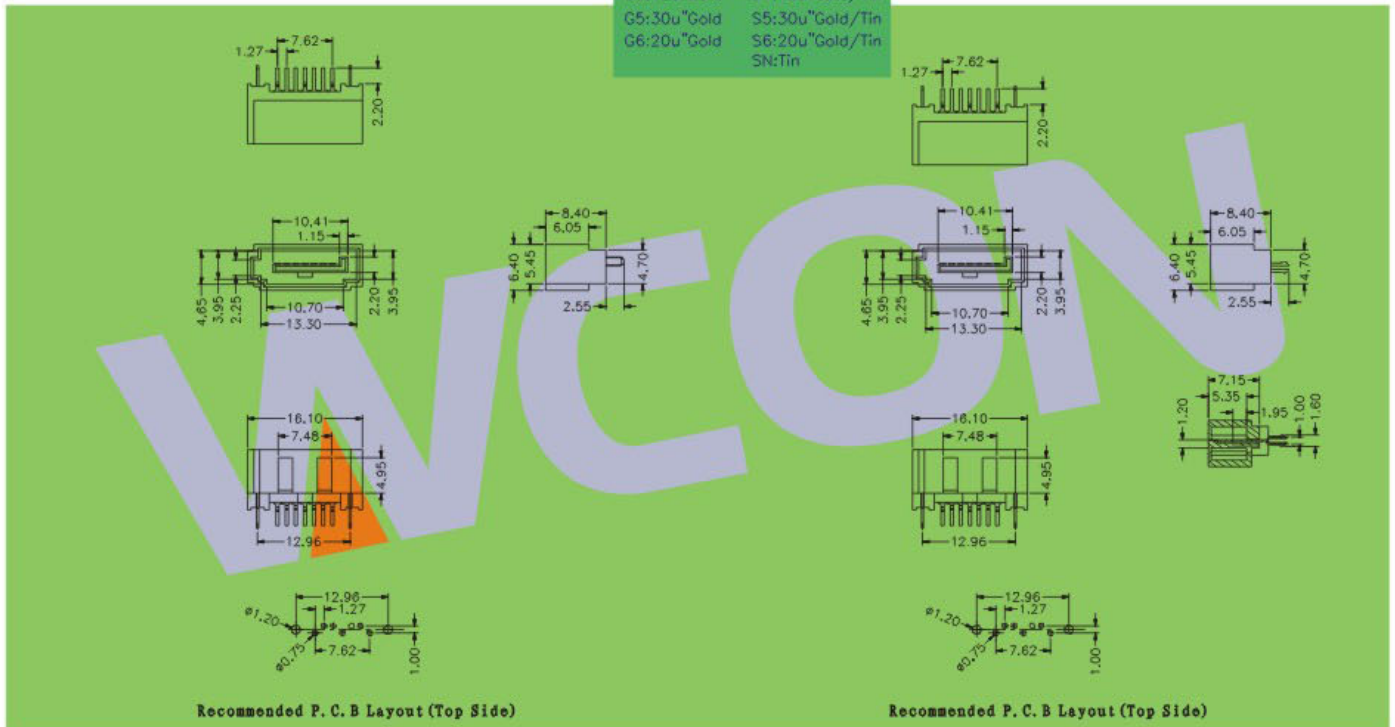
5412-07D1XXC01



5412-07D1XXC02

5412- 07      D1      XX      C      0      X

CONTACT	PLATING
G0:1u" Gold	S0:1u" Gold/Tin
G1:3u" Gold	S1:3u" Gold/Tin
G2:5u" Gold	S2:5u" Gold/Tin
G3:10u"Gold	S3:10u"Gold/Tin
G4:15u"Gold	S4:15u"Gold/Tin
G5:30u"Gold	S5:30u"Gold/Tin
G6:20u"Gold	S6:20u"Gold/Tin
	SN:Tin



※ INNOVATION AND DEVELOPMENT ※ CONTINUAL IMPROVEMENT ※ QUALITY FOREMOST ※ CUSTOMER SATISFACTION ※

Http:www.wafe-china.com      E-mail:sales@wafe-china.com

WAFE DONGGUAN FAX:+86 769 85358915 TEL:+86 769 85358920  
 WAFE KUNSHAN FAX:+86 512 57468468 TEL:+86 512 57468418