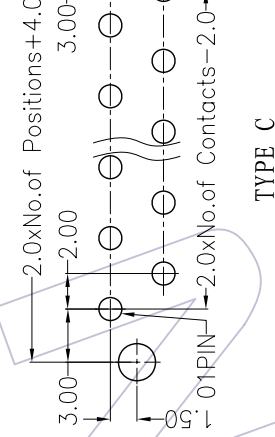
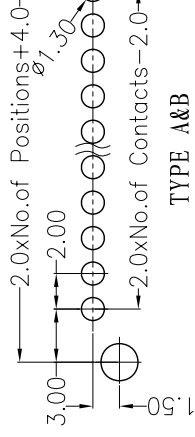
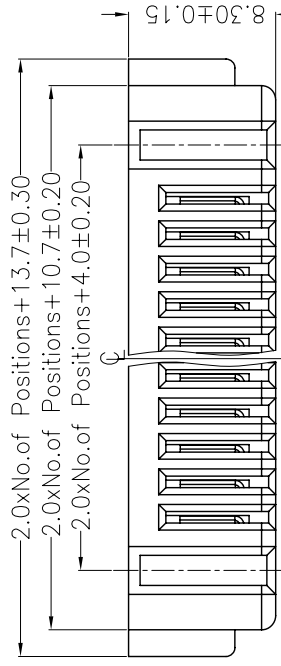


HSF

Recommended P.C.B Layout(Top Side)
(PCB BOARD TOLERANCE±0.05)

NOTES:

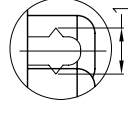
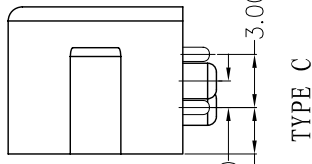
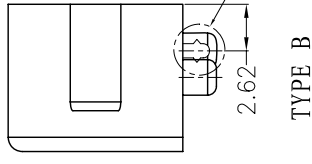
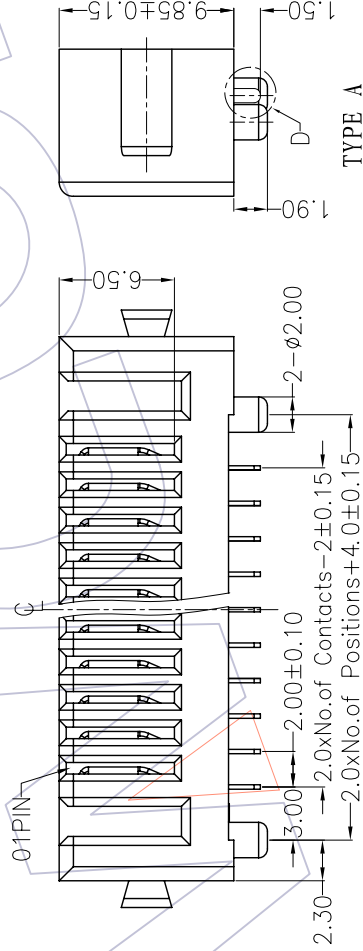
- Current Rating:5AMP
- Contact Resistance:30mΩ max
- Withstand Voltage:500V AC/DC
- Insulation Resistance:100MΩ min
- Operation Temperature:-40°C to +105°C
- Contact Material:Phosphor Bronze
- Contact Plating:Au or Sn Over Ni
- Insulator Material:PA6T+30%G.F(UL94V-0)



Ordering Information

4110- F XX N 01 D XX 0 X

- No. of Pins per Row: 5-9P
- Contact Plating:
 - G1=3μ"Gold
 - G2=5μ"Gold
 - G3=10μ"Gold
 - G4=15μ"Gold
 - G5=30μ"Gold
- Series No.
 - 1=Type A
 - 2=Type B
 - 3=Type C
- S1=3μ"Gold/Tin
- S2=5μ"Gold/Tin
- S3=10μ"Gold/Tin
- S4=15μ"Gold/Tin
- S5=30μ"Gold/Tin



DETAIL D (2:1)

DETAIL S (2:1)

REV	DATE	MODIFICATION DESCRIPTION	CHANGE	APPROVE	APPROVE	OPERATION	DRAW	WEI XD	SCALE	UNIT	SIZE	SHEET	TITLE:	PART NO.	SEE TABLE
A0	08/04/08	NEW				X.X ±0.40	DESIGN		2.5:1	mm	A4	1/1	2.0 BATTERY FEMALE H=9.85 W=8.3		
						X.XXX ±0.25	CHECK								
						X.XXX Angle ± 3°	APPROVE								
						DIM TOL									

WCON 维峰五金电子有限公司
WAPE HARDWARE ELECTRONICS CO.,LTD

PART NO.	TYPE
4110-FXXN01DXX01	TYPE A
4110-FXXN01DXX02	TYPE B
4110-FXXN01DXX03	TYPE C