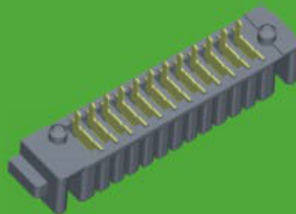
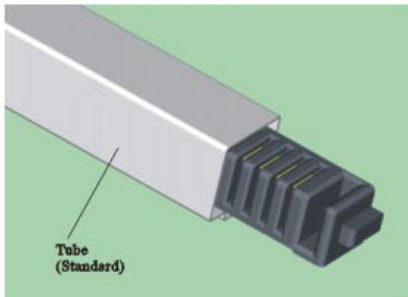


2.0mm Battery Female Connector

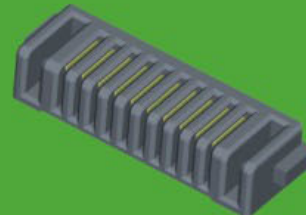
SPECIFICATIONS



Current Rating: 5.0AMP
 Contact Resistance: 30mΩ Max.
 Insulation Resistance: 100MΩ Min.
 Withstanding Voltage : 500V AC/Minute
 Operation Temperature: -40°C to +85°C
 Contact Material: Phosphor Bronze
 Contact plating: Au or Tin Over Ni
 Insulator Material: Polyester (UL94V-0)
 Standard: PA6T+30%GF



4112FXXN01DXX0X



4113FXXN01DXX01

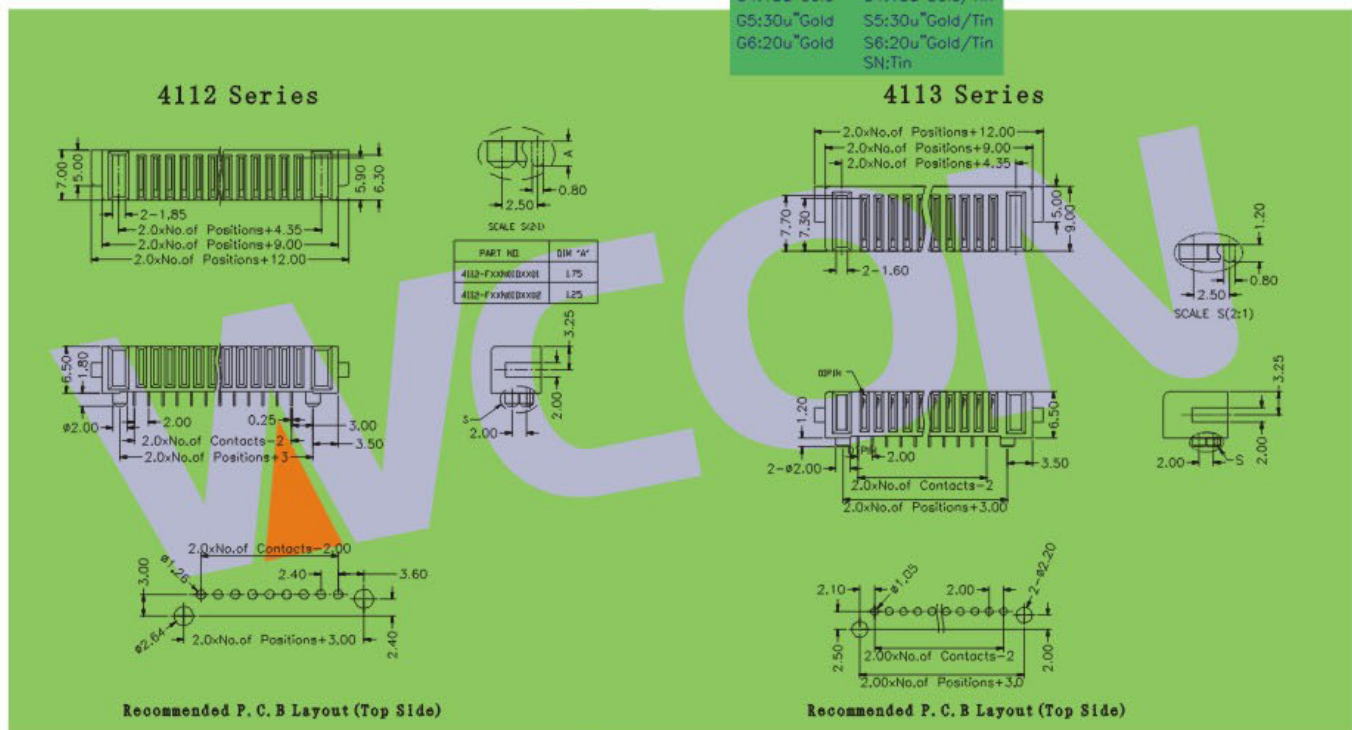
411X F XX N 01 D XX 0 X

TYPE

NO. OF PIN
5~12PIN

CONTACT PLATING	
G0:1u" Gold	S0:1u" Gold/Tin
G1:3u" Gold	S1:3u" Gold/Tin
G2:5u" Gold	S2:5u" Gold/Tin
G3:10u" Gold	S3:10u" Gold/Tin
G4:15u" Gold	S4:15u" Gold/Tin
G5:30u" Gold	S5:30u" Gold/Tin
G6:20u" Gold	S6:20u" Gold/Tin
	SN: Tin

JOURNAL NUMBER
1:1.75mm
2:1.25mm



※ INNOVATION AND DEVELOPMENT ※ CONTINUAL IMPROVEMENT ※ QUALITY FOREMOST ※ CUSTOMER SATISFACTION ※

Http:www.wafe-china.com E-mail:sales@wafe-china.com

WAFE DONGGUAN FAX:+86 769 85358915 TEL:+86 769 85358920
 WAFE KUNSHAN FAX:+86 512 57468468 TEL:+86 512 57468418