



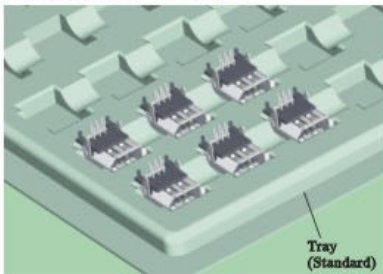
6133-RXXBD02

IEEE 1394 Connector

SPECIFICATIONS



Current Rating: 1.0AMP
 Contact Resistance: 30m Ω Max.
 Insulation Resistance: 1000M Ω Min.
 Withstanding Voltage : 500V AC/Minute
 Operation Temperature: -40°C to +85°C
 Contact Material: Brass
 Contact plating: Au or Tin Over Ni
 Insulator Material: Polyester (UL94V-0)
 Standard: PA66+30%GF
 Shell: Brass, Ni Plated



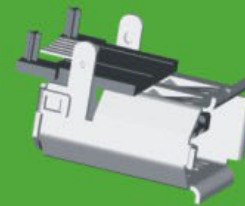
Tray
(Standard)



6133-RXXBD01



6133-MXXBD01

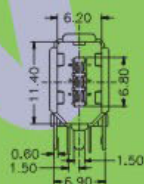
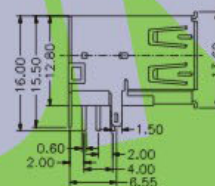
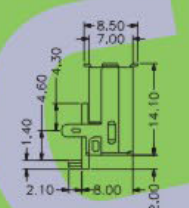
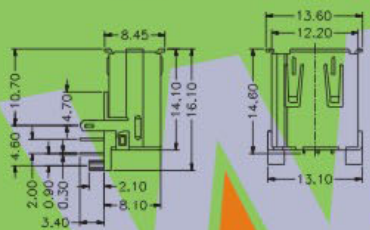
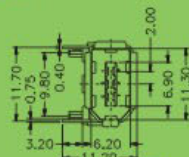
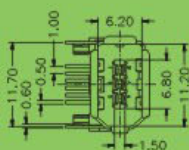


6133- X XX X D XX

TERMINAL SHAPE
 S: Straight
 R: Right Angle
 M: SMT

CONTACT PLATING
 G0: 1u" Gold S0: 1u" Gold/Tin
 G1: 3u" Gold S1: 3u" Gold/Tin
 G2: 5u" Gold S2: 5u" Gold/Tin
 G3: 10u" Gold S3: 10u" Gold/Tin
 G4: 15u" Gold S4: 15u" Gold/Tin
 G5: 30u" Gold S5: 30u" Gold/Tin
 G6: 20u" Gold S6: 20u" Gold/Tin
 SN: Tin

INSULATOR COLOUR
 B: Black W: White
 U: Blue G: Grey



Recommended P. C. B Layout (Top Side)

Recommended P. C. B Layout (Top Side)

Recommended P. C. B Layout (Top Side)

※ INNOVATION AND DEVELOPMENT ※ CONTINUAL IMPROVEMENT ※ QUALITY FOREMOST ※ CUSTOMER SATISFACTION ※

Http:www.wafe-china.com E-mail:sales@wafe-china.com

WAFE DONGGUAN FAX:+86 769 85358915 TEL:+86 769 85358920
 WAFE KUNSHAN FAX:+86 512 57468468 TEL:+86 512 57468418