



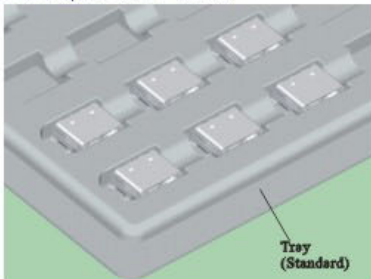
6510-19FHMXX00XW01

HDMI Connector

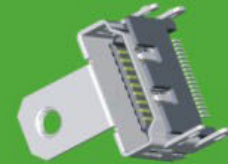
SPECIFICATIONS



Current Rating: 0.5AMP
 Contact Resistance: 50m Ω Max.
 Insulation Resistance: 100M Ω Min.
 Withstanding Voltage : 500V AC/Minute
 Operation Temperature: -25°C to +80°C
 Contact Material: Copper Alloy
 Contact plating: Au or Tin Over Ni
 Insulator Material: Polyester (UL94V-0)
 Standard: PBT+30%GF
 Shell: Spcc ,Ni Plated



6510-19FHMXX00XN01



6510-19FHMXX01XN01



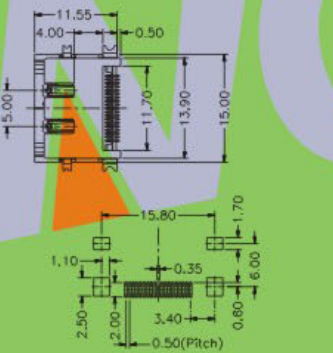
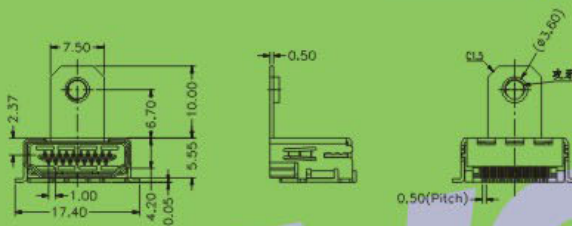
6510-19FHMXX03XN01



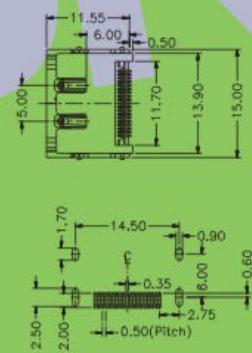
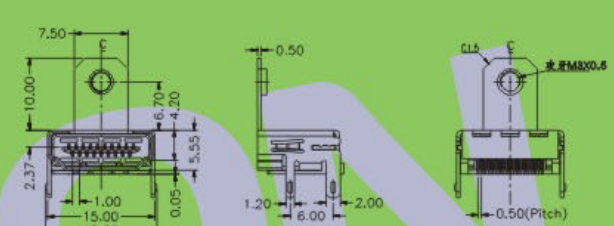
6510-19FHMXX04XW01

6510-19F XX XX XX X X 01

CONTACT TYPE	CONTACT PLATING	SHELL TYPE	SHELL MATERIAL	INSULATOR TYPE
VM:180°SMT Upright	G0:1u" Gold	00:DIP Without Screw eye	B:Brass	W:With Pillar
HM:90°SMT Horizontal	S0:1u" Gold/Tin	01:DIP With Screw eye	P:Phosphor Bronze	N:Without Pillar
D2:90°Two Row DIP	G1:3u" Gold	02:DIP With Screw eye in both side	S:Spcc	
D3:90°Three Row DIP	G2:5u" Gold	03:SMT Without Screw eye		
D4:90°Four Row DIP	S3:10u"Gold/Tin	04:SMT With Screw eye		
	G4:15u"Gold	05:SMT With Screw eye in both side		
	S4:15u"Gold/Tin			
	G5:30u"Gold			
	S5:30u"Gold/Tin			
	G6:20u"Gold			
	S6:20u"Gold/Tin			
	SN:Tin			



Recommended P. C. B Layout (Top Side)



Recommended P. C. B Layout (Top Side)

※ INNOVATION AND DEVELOPMENT ※ CONTINUAL IMPROVEMENT ※ QUALITY FOREMOST ※ CUSTOMER SATISFACTION ※

Http:www.wafe-china.com E-mail:sales@wafe-china.com

WAFE DONGGUAN FAX:+86 769 85358915 TEL:+86 769 85358920
 WAFE KUNSHAN FAX:+86 512 57468468 TEL:+86 512 57468418