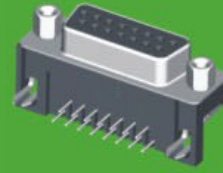


6223-XXFXXB04



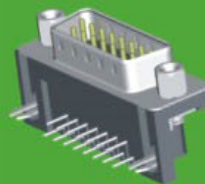
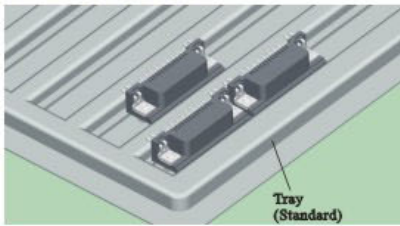
6223-XXFXXB05

D-sub Connector 10.40mm Footprint Right Angle Type

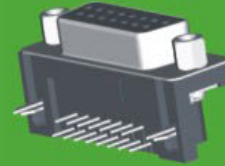
SPECIFICATIONS



Current Rating: 3.0AMP
 Contact Resistance: 25mΩ Max.
 Insulation Resistance: 1000MΩ Min.
 Withstanding Voltage : 500V AC/Minute
 Operation Temperature : -55°C to +105°C
 Contact Material: Brass
 Contact plating: Au or Tin Over Ni
 Insulator Material: Polyester (UL94V-0)
 Standard: PBT+30%GF
 Shell: Cold Roller Steel ,Ni Plated
 Revit: Brass ,Tin Over Ni Plated
 Screw: Brass, Ni Plated



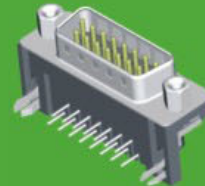
6223-XXMXXB06



6223-XXFXXB06



6223-XXMXXB04



6223-XXMXXB05

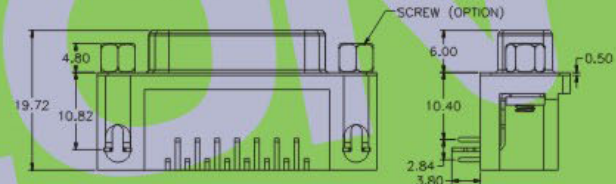
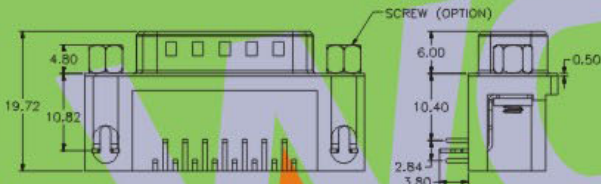
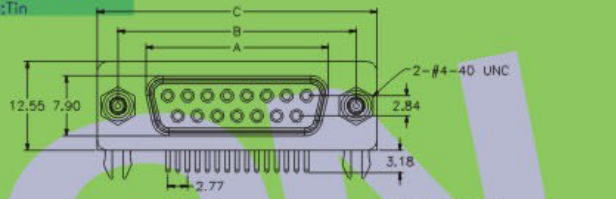
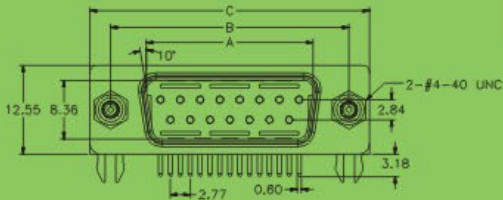
6223- XX X XX B 0X

NO.OF PINS
9,15,25,37P

TYPE
M:Male
F:Female

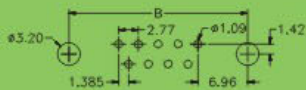
CONTACT PLATING
 G0:1u" Gold S0:1u" Gold/Tin
 G1:3u" Gold S1:3u" Gold/Tin
 G2:5u" Gold S2:5u" Gold/Tin
 G3:10u"Gold S3:10u"Gold/Tin
 G4:15u"Gold S4:15u"Gold/Tin
 G5:30u"Gold S5:30u"Gold/Tin
 G6:20u"Gold S6:20u"Gold/Tin
 SN:Tin

INSULATOR COLOR
 B:Black W:White
 U:Blue G:Grey

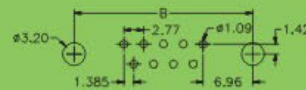


No. of Positions	DIM "A"	DIM "B"	DIM "C"
9	16.92	24.99	30.81
15	25.26	38.32	39.14
25	38.96	47.04	53.04
37	55.42	63.50	69.32

No. of Positions	DIM "A"	DIM "B"	DIM "C"
9	16.33	24.99	30.81
15	24.66	33.32	39.14
25	38.38	47.04	53.04
37	54.84	63.50	69.32



Recommended P. C. B Layout (Top Side)



Recommended P. C. B Layout (Top Side)

※ INNOVATION AND DEVELOPMENT ※ CONTINUAL IMPROVEMENT ※ QUALITY FOREMOST ※ CUSTOMER SATISFACTION ※

Http:www.wafe-china.com E-mail:sales@wafe-china.com

WAFE DONGGUAN FAX:+86 769 85358915 TEL:+86 769 85358920
 WAFE KUNSHAN FAX:+86 512 57468468 TEL:+86 512 57468418