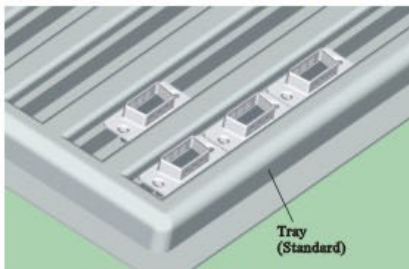


D-sub Connector Crimp Type

SPECIFICATIONS



Current Rating: 3.0AMP
 Contact Resistance: 20mΩ Max.
 Insulation Resistance: 1000MΩ Min.
 Withstanding Voltage : 500V AC/Minute
 Operation Temperature: -55°C to +105°C
 Contact Material: Phosphor Bronze/Brass
 Contact plating: Au or Tin Over Ni
 Insulator Material: Polyester (UL94V-0)
 Standard: PBT+30%GF
 Shell: Cold Roller Steel ,Ni Plated



6221-XXMXXB01



MALE TERMINAL



6221-XXFXXB01



FEMALE TERMINAL

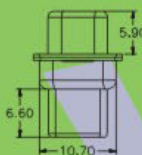
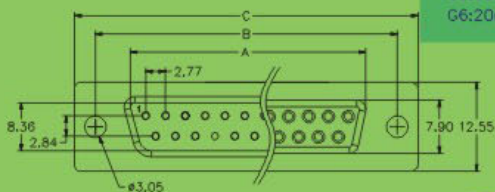
6221-XX X XX X 01

NO. OF PINS
 9,15,25,37P

TYPE
 M: Male
 F: Female

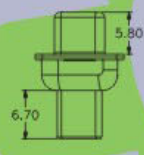
CONTACT PLATING
 G0: 1u" Gold S0: 1u" Gold/Tin
 G1: 3u" Gold S1: 3u" Gold/Tin
 G2: 5u" Gold S2: 5u" Gold/Tin
 G3: 10u" Gold S3: 10u" Gold/Tin
 G4: 15u" Gold S4: 15u" Gold/Tin
 G5: 30u" Gold S5: 30u" Gold/Tin
 G6: 20u" Gold S6: 20u" Gold/Tin
 SN: Tin

INSULATOR COLOR
 B: Black W: White
 U: Blue G: Grey



No. of Positions	DIM "A"	DIM "B"	DIM "C"	DIM "D"
9	16.92	24.99	30.81	19.28
15	25.28	33.32	39.14	27.65
25	38.96	47.04	53.04	41.30
37	55.42	63.50	69.32	57.44

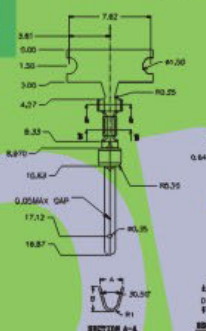
MALE



No. of Positions	DIM "A"	DIM "B"	DIM "C"	DIM "D"
9	16.33	24.99	30.81	19.28
15	24.66	33.32	39.14	27.65
25	38.38	47.04	53.04	41.30
37	54.84	63.50	69.32	57.44

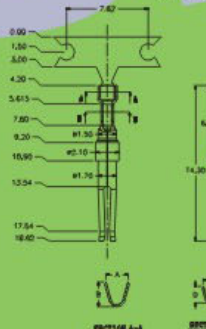
FEMALE

PLUG



NO.	NO. 09	NO. 15	NO. 25	NO. 37
A	2.94	3.14	3.33	
B	3.76	3.76	3.76	
C	1.88	1.88	1.88	
D	3.13	3.13	3.13	
E1	10.90	10.90	10.90	
E2	10.70	10.70	10.70	

SOCKET



NO.	NO. 09	NO. 15	NO. 25	NO. 37
A	2.89	2.94	3.00	
B	2.79	2.80	2.78	
C	2.95	2.75	2.87	
D	3.13	3.14	3.14	

※ INNOVATION AND DEVELOPMENT ※ CONTINUAL IMPROVEMENT ※ QUALITY FOREMOST ※ CUSTOMER SATISFACTION ※

Http:www.wafe-china.com E-mail:sales@wafe-china.com

WAFE DONGGUAN FAX:+86 769 85358915 TEL:+86 769 85358920
 WAFE KUNSHAN FAX:+86 512 57468468 TEL:+86 512 57468418