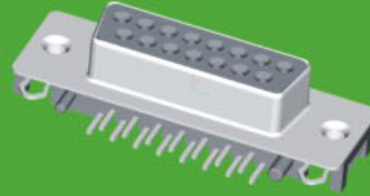
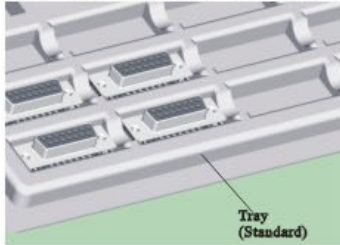


# D-SUB SLIM Connector

## SPECIFICATIONS



Current Rating: 3.0AMP  
 Contact Resistance: 25m  $\Omega$  Max.  
 Insulation Resistance: 5000M  $\Omega$  Min.  
 Withstanding Voltage :1000V AC/Minute  
 Operation Temperature: -55°C to+105°C  
 Contact Material: Brass  
 Contact plating: Au or Tin Over Ni  
 Insulator Material: Polyester (UL94V-0)  
 Standard: PA66+30%GF  
 Shell: Cold Roller Steel ,Ni Plated  
 Revit/Harpoon: Brass ,Tin Over Ni Plated



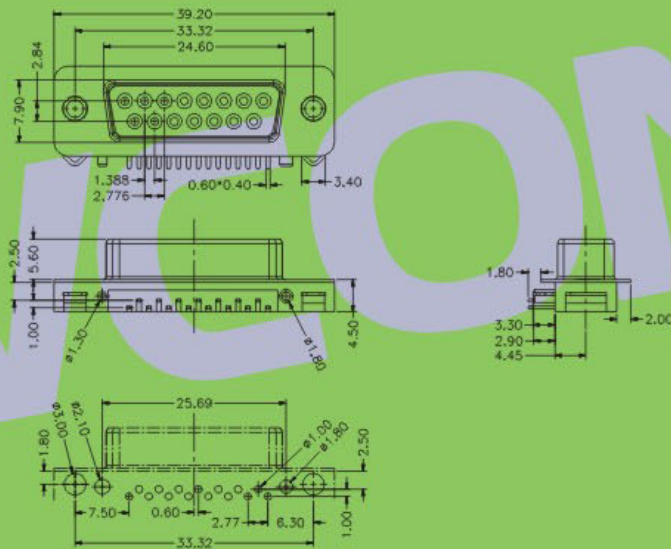
6225-09FXXX01

## 6225-XX F XX X 01

NO.OF PINS  
9,15,25P

CONTACT PLATING  
 G0:1u" Gold S0:1u" Gold/Tin  
 G1:3u" Gold S1:3u" Gold/Tin  
 G2:5u" Gold S2:5u" Gold/Tin  
 G3:10u"Gold S3:10u"Gold/Tin  
 G4:15u"Gold S4:15u"Gold/Tin  
 G5:30u"Gold S5:30u"Gold/Tin  
 G6:20u"Gold S6:20u"Gold/Tin  
 SN:Tin

INSULATOR COLOR  
 B:Black W:White  
 U:Blue G:Grey



Recommended P. C. B Layout (Top Side)

※ INNOVATION AND DEVELOPMENT ※ CONTINUAL IMPROVEMENT ※ QUALITY FOREMOST ※ CUSTOMER SATISFACTION ※

Http:www.wafe-china.com E-mail:sales@wafe-china.com

WAFE DONGGUAN FAX:+86 769 85358915 TEL:+86 769 85358920  
 WAFE KUNSHAN FAX:+86 512 57468468 TEL:+86 512 57468418