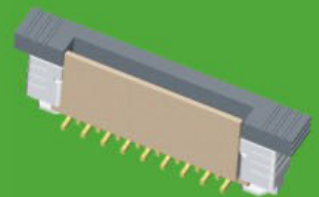


5140-XXSMXWX01



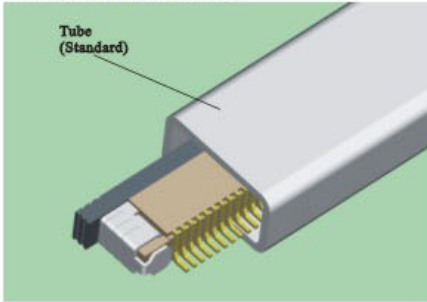
5140-XXSMXWX02

0.50mm FPC Connector

SPECIFICATIONS



Current Rating: 0.4AMP
 Contact Resistance: 20mΩ Max.
 Insulation Resistance: 500MΩ Min.
 Withstanding Voltage : 50V AC/Minute
 Operation Temperature: -40°C to +80°C
 Contact Material: Phosphor Bronze
 Fitting Nail: Brass
 Insulator Material: Polyester (UL94V-0)
 StandArd: PBT+30%GF



5140-XXRMUWX01

5140-XXRMBWX01

5140-XX X X X W X 01

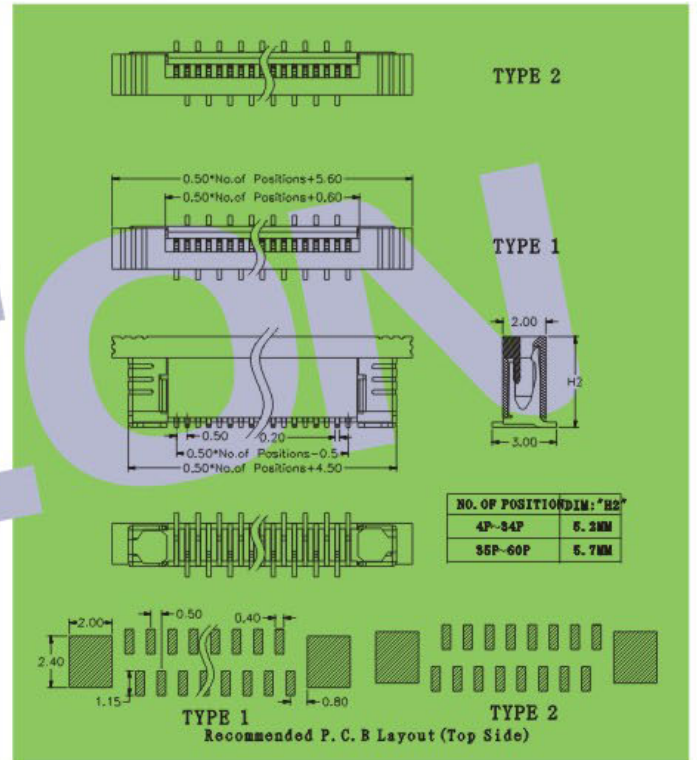
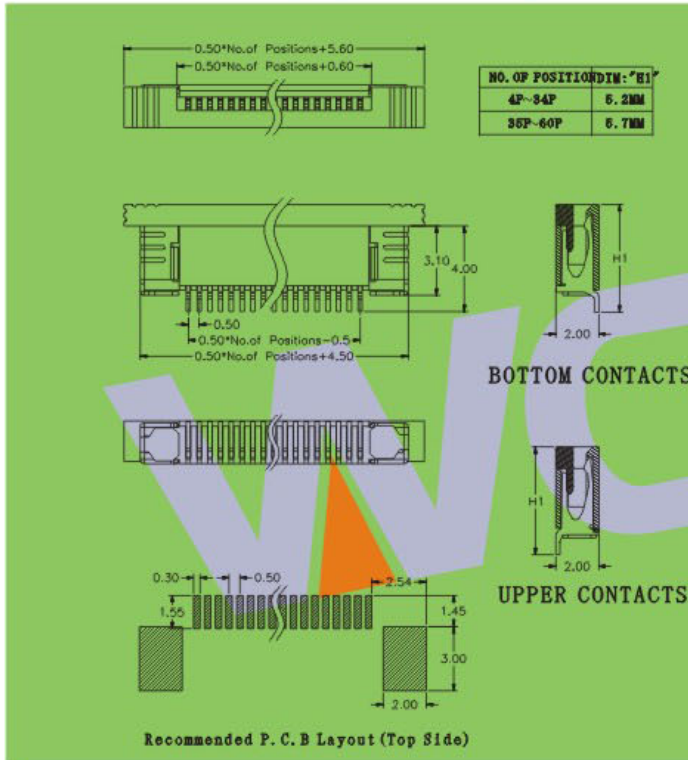
NO. OF PINS
 PER ROW
 04~60P

CONTACT SHAPE
 S: Straight
 R: Right Angle

SOLDER TYPE
 D: DIP
 M: SMT

CONTACT TYPE
 D: Dual contact
 U: Up contact
 B: Bottom contact

INSULATOR COLOUR
 B: Black W: White
 E: Beige A: Brown



※ INNOVATION AND DEVELOPMENT ※ CONTINUAL IMPROVEMENT ※ QUALITY FOREMOST ※ CUSTOMER SATISFACTION ※

Http:www.wafe-china.com E-mail:sales@wafe-china.com

WAFE DONGGUAN FAX:+86 769 85358915 TEL:+86 769 85358920
 WAFE KUNSHAN FAX:+86 512 57468468 TEL:+86 512 57468418