

HSHF

TECHNICAL SPECS:

Current Rating: 1.0AMP
 Contact Resistance: 10mΩ Max
 Dielectric Strength: Min 1000V_{RMS}
 Mechanical Life: Min 500 cycles
 Operation Temperature: -40°C to +105°C

Sleeve: Brass CuZn36Pb3(C360000)

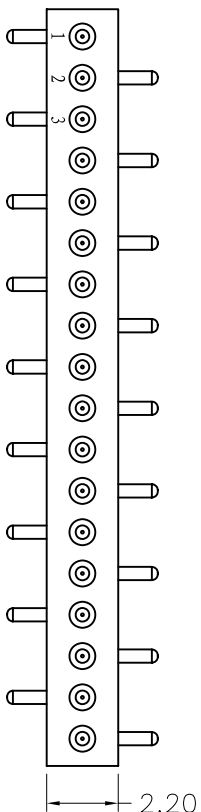
Connecting Pin: ϕ 0.41mm

Contact plating: Au or Sn over Ni

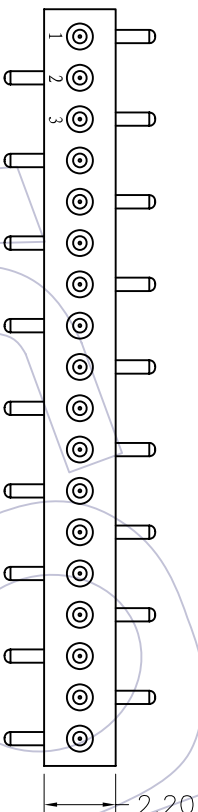
Insulator Material: PPS+30%G.F.(UL94V-0)

Coplanarity SMD terminations: max 0.1mm
 (measured on 25mm long connectors)

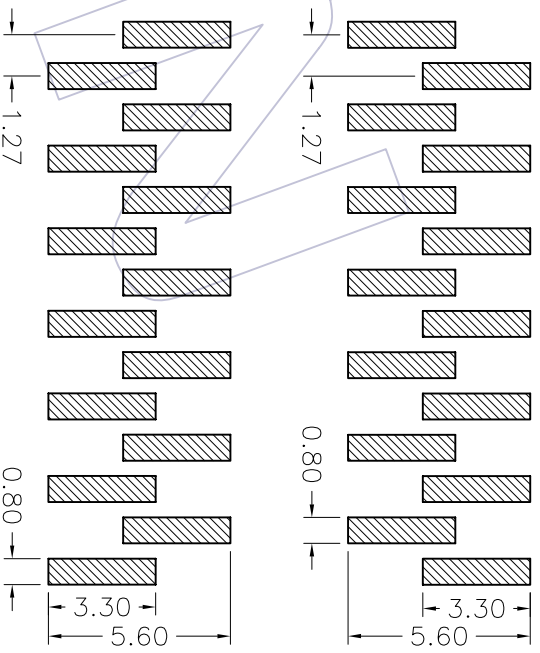
Recommended P.C.B Layout(Top Side)
 (PCB BOARD TOLERANCE \pm 0.05)



TYPE 1



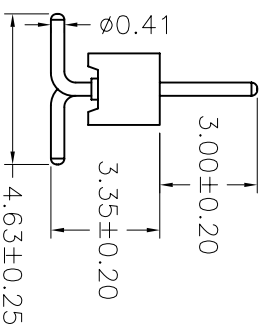
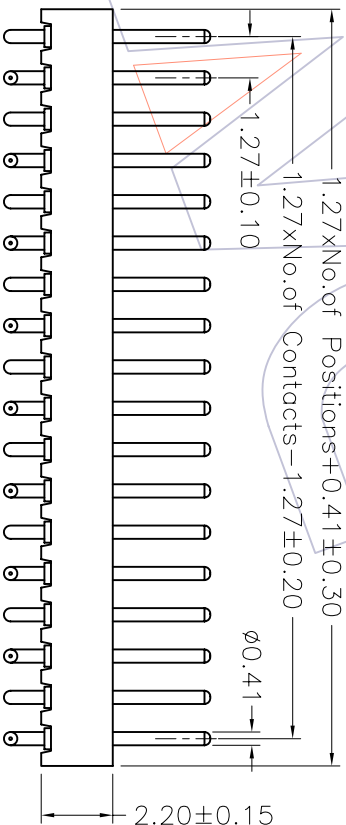
TYPE 2



Ordering Information

3514-221 XX M XX 082 XX

No. of Pin Contact Plating Series No.
 2-50PIN G0=Gold Flash 1=Type 1
 G1=3u"Gold P=Tube+CAP 2=Type 2
 G2=5u"Gold R=Tape&Rect+CAP
 G3=10u"Gold
 G4=15u"Gold
 G5=30u"Gold
 S0=Gold Flash/Tin
 S1=3u"Gold/Tin
 S2=5u"Gold/Tin
 S3=10u"Gold/Tin
 S4=15u"Gold/Tin
 S5=30u"Gold/Tin
 SN=Tin



OPERATION	DRAW	WEIXD	SCALE	PART NO.
X.X	DESIGN	08/10/17	1:1	3514-221XXMXX082XX
X.XX	CHECK		mm	1-27mm MACHINED PIN HEADER
X.XXX	APPROVE		A4	SINGLE ROW 180° SMT H=2.20 L=8.2
Angle			1/1	
\pm 3'			PROJ.	Customer NO.
DIM				
CHANGE	APPROVE			
MODIFICATION DESCRIPTION				
NEW				
DATE				
REV				

WCON 维峰五金电子有限公司
 WAVE HARDWARE ELECTRONICS CO. LTD