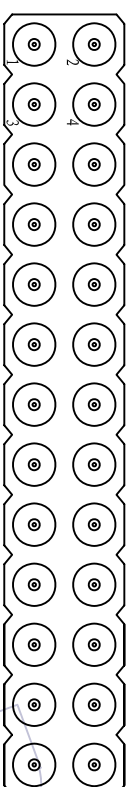


HSHF

TECHNICAL SPECS:

Current Rating: 3.0AMP
 Contact Resistance: 10mΩ Max
 Dielectric Strength: Min 1000Vrms
 Mechanical Life: Min 500 cycles
 Operation Temperature: -40°C to +105°C

Sleeve: Brass CuZn36Pb3(C36000)
 Connecting Pin: $\phi 0.47$ mm
 Contact plating: Au or Sn over Ni
 Insulator Material: PPS+30%G.F(UL94V-0)



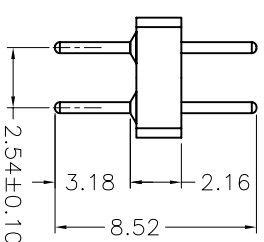
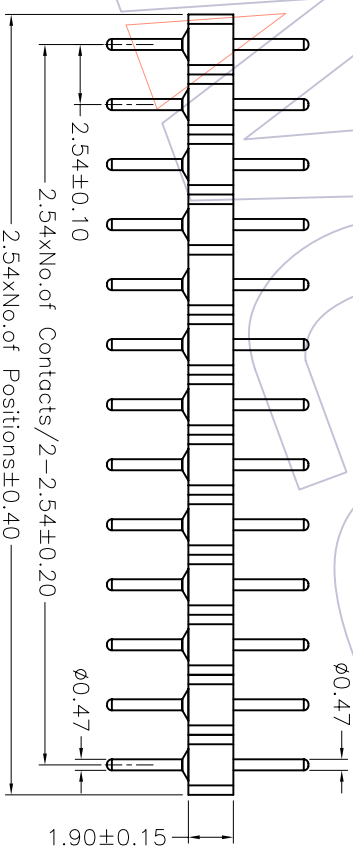
Recommended P.C.B Layout(Top Side)
 (PCB BOARD TOLERANCE±0.05)

Ordering Information

3510-192 XX S XX 085 X 1

No. of Pin
 2~40PIN
 Contact Plating
 G0=Gold Flash
 G1=3u"Gold
 G2=5u"Gold
 G3=10u"Gold
 G4=15u"Gold
 G5=30u"Gold
 S0=Gold Flash/Tin
 S1=3u"Gold/Tin
 S2=5u"Gold/Tin
 S3=10u"Gold/Tin
 S4=15u"Gold/Tin
 S5=30u"Gold/Tin
 SN=Tin

Packing
 A=Tray
 T=Tube



REV	DATE	MODIFICATION DESCRIPTION	CHANGE	APPROVE	OPERATION		DRAW	WEIXD	08/10/10	SCALE		PART NO.	TITLE:
					XXX	±0.40				UNIT	1:1		
A0	08/10/10	NEW			XXX	±0.25	DESIGN			mm	A4	3510-192XXSX085X1	2.54mm MACHINED PIN HEADER DUAL ROW 180° H=1.90 L=8.52
					Angle	± 3'	CHECK				1/1		
					DIM	TOL	APPROVE					Customer NO.	

WCON 维峰五金电子有限公司
 WAFE HARDWARE ELECTRONICS CO. LTD