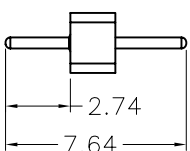
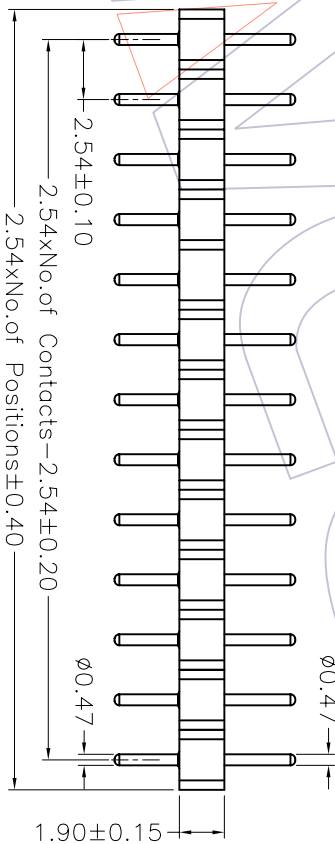
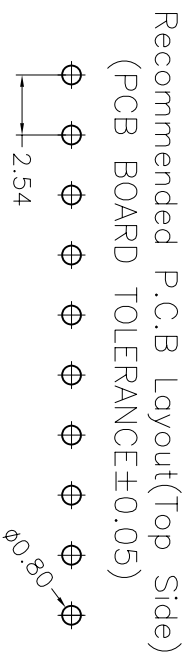


HSHF

TECHNICAL SPECS:

Current Rating: 3.0AMP
 Contact Resistance: 10mΩ Max
 Dielectric Strength: Min 1000VRMS
 Mechanical Life: Min 500 cycles
 Operation Temperature: -40°C to +105°C

Sleeve: Brass CuZn36Pb3(C36000)
 Connecting Pin: $\phi 0.47$ mm
 Contact plating: Au or Sn over Ni
 Insulator Material: PPS+30%G.F.(UL94V-0)



Ordering Information

3510-191 XX S XX 076 X 1

- No. of Pin: 1~40PIN
- Contact Plating: G0=Gold Flash, G1=3u"Gold, G2=5u"Gold, G3=10u"Gold, G4=15u"Gold, G5=30u"Gold
- SO=Gold Flash/Tin, S1=3u"Gold/Tin, S2=5u"Gold/Tin, S3=10u"Gold/Tin, S4=15u"Gold/Tin, S5=30u"Gold/Tin, SN=Tin
- Packing: A=Tray, T=Tube

REV	DATE	MODIFICATION DESCRIPTION	CHANGE	APPROVE	OPERATION		DRAW	WEIXD	08/10/10	SCALE		PART NO.	TITLE:
					XXX	± 0.40				UNIT	1:1		
A0	08/10/10	NEW			XXX	± 0.25	DESIGN			mm	A4	3510-191XXSX076X1	2.54mm MACHINED PIN HEADER SINGLE ROW 180° $\phi=1.90$ L=7.64
					Angle	$\pm 3'$	CHECK				1/1		
					DIM	TOL	APPROVE					Customer NO.	

WCON 维峰五金电子有限公司
 WAFE HARDWARE ELECTRONICS CO.,LTD