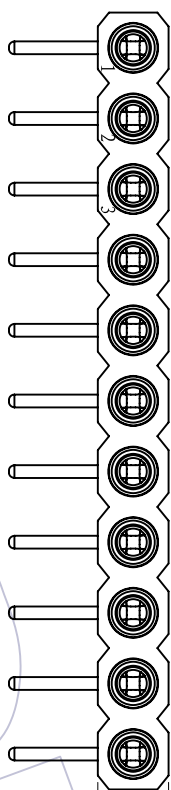


HSHF

TECHNICAL SPECS:

Current Rating:3.0AMP
 Contact Resistance:10mΩ Max
 Dielectric Strength: Min 1000Vrms
 Mechanical Life: Min 500 cycles
 Mating Pin:φ0.40 to φ0.56mm
 Forces: (polished steel gauge φ0.43mm)
 -Insertion:2N typ. -Withdrawal:1N typ.
 Operation Temperature:-40°C to +105°C

Sleeve:Brass CuZn36Pb3(C36000)
 Contact Clip(4 finger):BeCu(C17200)
 Contact plating:Au or Sn over Ni
 Insulator Material:PPS+30%G.F(UL94V-0)

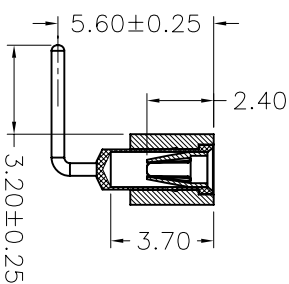
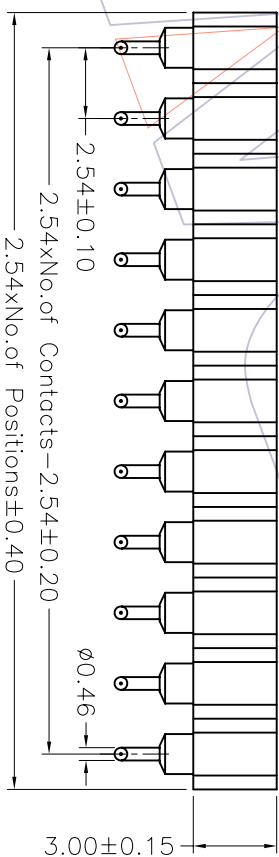


Recommended P.C.B Layout(Top Side)
 (PCB BOARD TOLERANCE±0.05)

Ordering Information

3520-301 XX R XX 098 X 1

- No. of Pin 2-40PIN
- Contact Plating G0=Gold Flash G1=3u"Gold G2=5u"Gold G3=10u"Gold G4=15u"Gold G5=30u"Gold S0=Gold Flash/Tin S1=5u"Gold/Tin S2=5u"Gold/Tin S3=10u"Gold/Tin S4=15u"Gold/Tin S5=30u"Gold/Tin SN=Tin
- Packing A=Tray T=Tube



REV	DATE	MODIFICATION DESCRIPTION	CHANGE	APPROVE	OPERATION	DRAW	WEIXD	SCALE	PART NO.	TITLE:
A0	08/10/14	NEW			XXX ±0.40 XXX ±0.25 XXX ±0.15	DESIGN CHECK	08/10/14	1:1 mm A4	3520-301XXRX098X1	2.54mm MACHINED FEMALE HEADER SINGLE ROW 90° H=3.00 L=9.8
1					Angle ± 3'	CHECK APPROVE		1/1	Customer NO.	

WCON 维峰五金电子有限公司
 WAFER HARDWARE ELECTRONICS CO.,LTD