

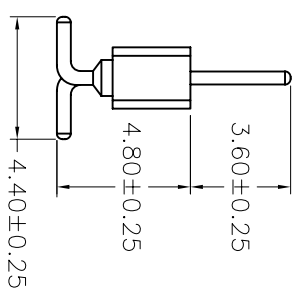
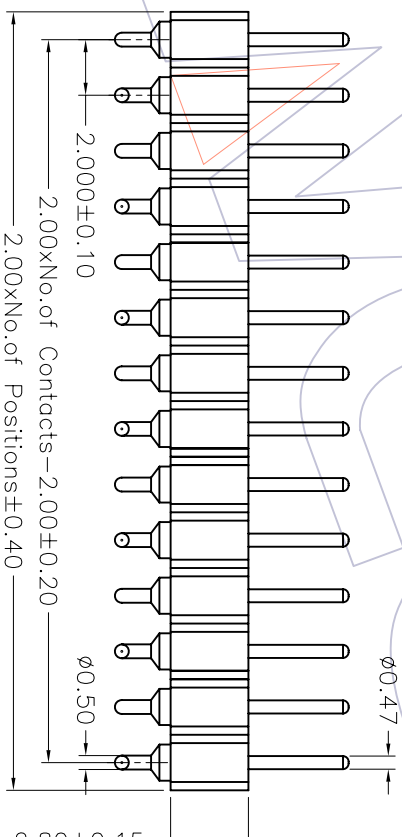
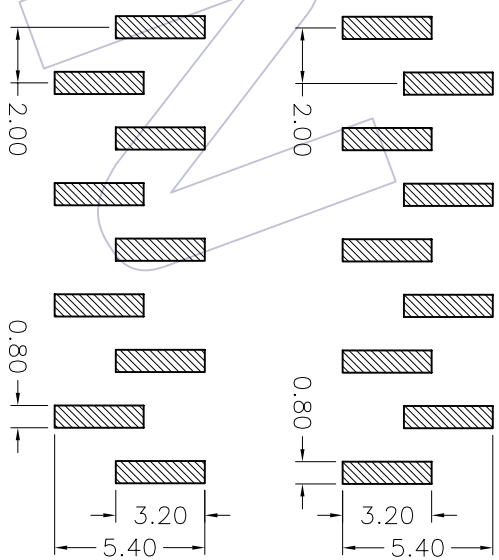
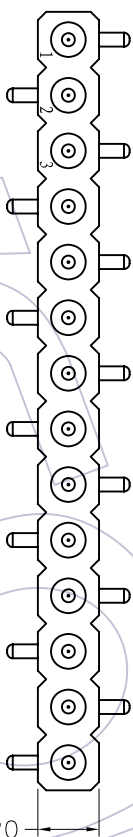
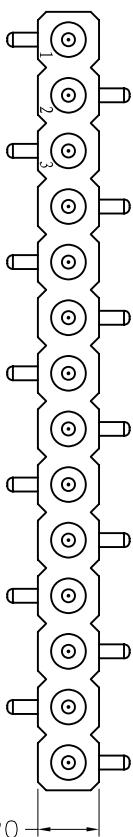
HSPF

TECHNICAL SPECS:

Current Rating: 3.0AMP
 Contact Resistance: 10mΩ Max
 Dielectric Strength: Min 1000Vrms
 Mechanical Life: Min 500 cycles
 Operation Temperature: -40°C to +105°C

Sleeve: Brass CuZn36Pb3(C36000)
 Connecting Pin: $\phi 0.47$ mm
 Contact plating: Au or Sn over Ni
 Insulator Material: PPS+30%G.F.(UL94V-0)
 Coplanarity SMD terminations: max 0.1mm
 (measured on 25mm long connectors)

Recommended P.C.B Layout(Top Side)
 (PCB BOARD TOLERANCE ± 0.05)



Ordering Information

3512-281 XX M XX 101 X X

- No. of Pin 2-40PIN
- Contact Plating G0=Gold Flash G1=3u"Gold G2=5u"Gold G3=10u"Gold G4=15u"Gold G5=30u"Gold S0=Gold Flash/Tin S1=3u"Gold/Tin S2=5u"Gold/Tin S3=10u"Gold/Tin S4=15u"Gold/Tin S5=30u"Gold/Tin SN=Tin
- Packing T=Tube P=Tube+CAP R=Tape&Reel+CAP
- Series No. 1=Type 1 2=Type 2

REV	DATE	MODIFICATION DESCRIPTION	CHANGE	APPROVE	OPERATION		DRAW	WEIXD	08/10/17	SCALE		PART NO.	TITLE:
					XXX	± 0.40				DESIGN	UNIT		
A0	08/10/17	NEW			XXX	± 0.25	CHECK	A4	3512-281XXMXX101XX	2.00mm MACHINED PIN HEADER SINGLE ROW 180° SMT H=2.80 L=10.1			
REV	DATE	MODIFICATION DESCRIPTION	CHANGE	APPROVE	Angle	$\pm 3'$	CHECK						

WCON 维峰五金电子有限公司
 WAVE HARDWARE ELECTRONICS CO. LTD