

# HSPF

## TECHNICAL SPECS:

Current Rating: 3.0AMP  
 Contact Resistance: 10mΩ Max  
 Dielectric Strength: Min 1000Vrms  
 Mechanical Life: Min 500 cycles  
 Operation Temperature: -40°C to +105°C

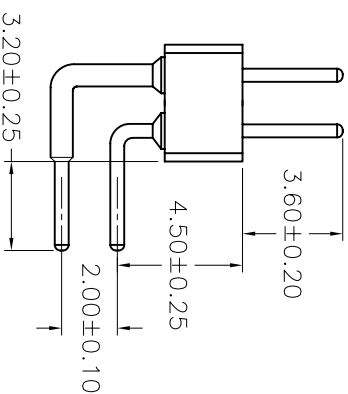
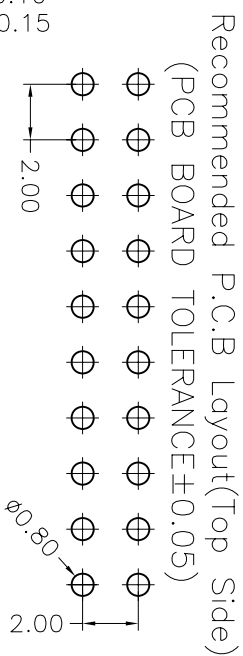
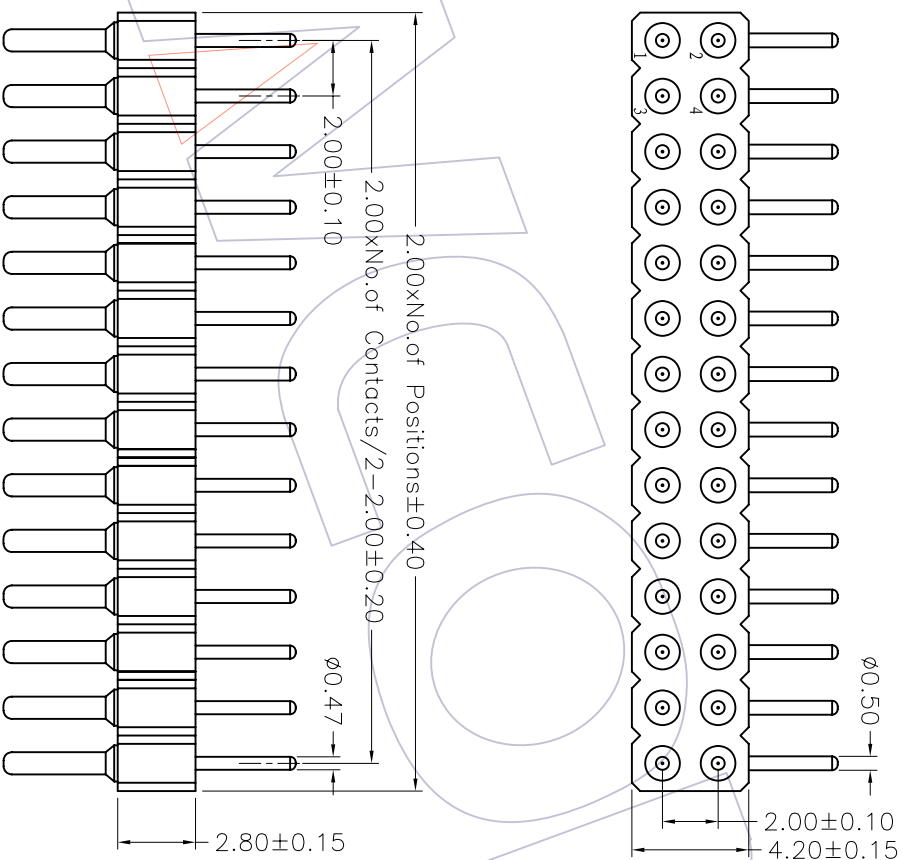
Sleeve: Brass CuZn36Pb3(C336000)  
 Connecting Pin:  $\phi 0.47$ mm  
 Contact plating: Au or Sn over Ni  
 Insulator Material: PPS+30%G.F.(UL94V-0)

## Ordering Information

3512-282 XX R XX 122 X 1

No. of Pin: 2-40PIN  
 Contact Plating:  
 G0=Gold Flash  
 G1=3u"Gold  
 G2=5u"Gold  
 G3=10u"Gold  
 G4=15u"Gold  
 G5=30u"Gold  
 S0=Gold Flash/Tin  
 S1=3u"Gold/Tin  
 S2=5u"Gold/Tin  
 S3=10u"Gold/Tin  
 S4=15u"Gold/Tin  
 S5=30u"Gold/Tin  
 SN=Tim

Packaging:  
 A=Tray  
 T=Tube



REV	DATE	MODIFICATION DESCRIPTION	CHANGE	APPROVE	OPERATION		DRAW	WEIXD	08/10/17	SCALE		PART NO.	TITLE:
					XXX	±0.40				DESIGN	UNIT		
A0	08/10/17	NEW			XXX	±0.25	CHECK	A4	3512-282XXRX122X1	2.00mm MACHINED PIN HEADER			
					Angle	± 3'	APPROVE						
					DIM	TOL							

**WCON** 维峰五金电子有限公司  
 WAFER HARDWARE ELECTRONICS CO., LTD

DRAW: KON 90° H=2.80 L=12.2