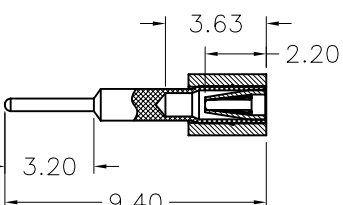
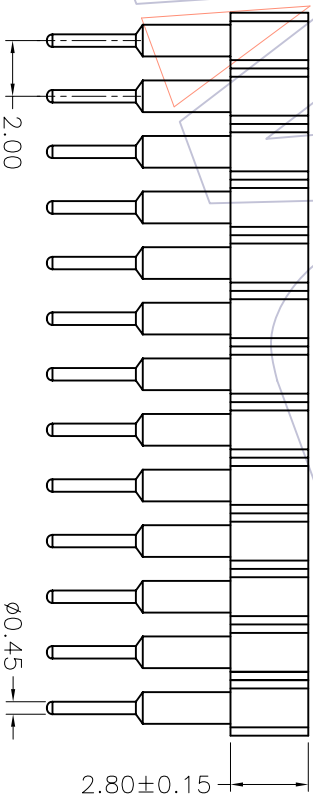
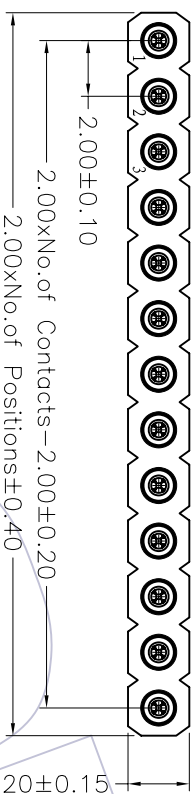
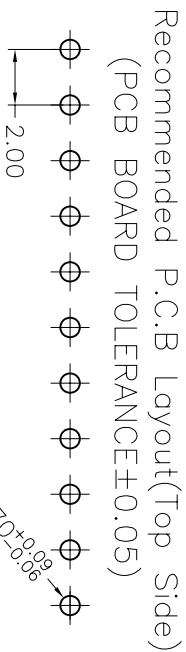


HSHF

TECHNICAL SPECS:

Current Rating:3.0AMP
 Contact Resistance:10mΩ Max
 Dielectric Strength: Min 1000Vrms
 Mechanical Life: Min 500 cycles
 Mating Pin:φ0.40 to φ0.66mm or 0.50SQ
 Forces: (polished steel gauge φ0.46mm)
 -Insertion:0.7N typ. -Withdrawal:0.4N typ.
 Operation Temperature:-40°C to +105°C

Sleeve:Brass CuZn36Pb3(C36000)
 Contact Clip(4 finger):BeCu(C17200)
 Contact plating:Au or Sn over Ni
 Insulator Material:PPS+30%G.F(UL94V-0)



Ordering Information

3522-281 XX S XX 094 X 1

No. of Pin
 2-40PIN
 Contact Plating
 G0=Gold Flash
 G1=3u"Gold
 G2=5u"Gold
 G3=10u"Gold
 G4=15u"Gold
 G5=30u"Gold
 S0=Gold Flash/Tin
 S1=3u"Gold/Tin
 S2=5u"Gold/Tin
 S3=10u"Gold/Tin
 S4=15u"Gold/Tin
 S5=30u"Gold/Tin
 SN=Tin

Packing
 A=Tray
 T=Tube

REV	DATE	MODIFICATION DESCRIPTION	CHANGE	APPROVE	OPERATION	DRAW	WEIXD	SCALE	PART NO.	TITLE:
A0	08/10/13	NEW			X.X ±0.40	DESIGN	08/10/13	1:1 mm	3522-281XXSX094X1	2.00mm MACHINED FEMALE HEADER SINGLE ROW 180° H=2.80 L=9.4
					X.XX ±0.25	CHECK		A4		
					X.XXX ±0.15	CHECK		1/1		
					Angle ± 3'	APPROVE		PROJ.	Customer NO.	

WCON 维峰五金电子有限公司
 WAVE HARDWARE ELECTRONICS CO.,LTD