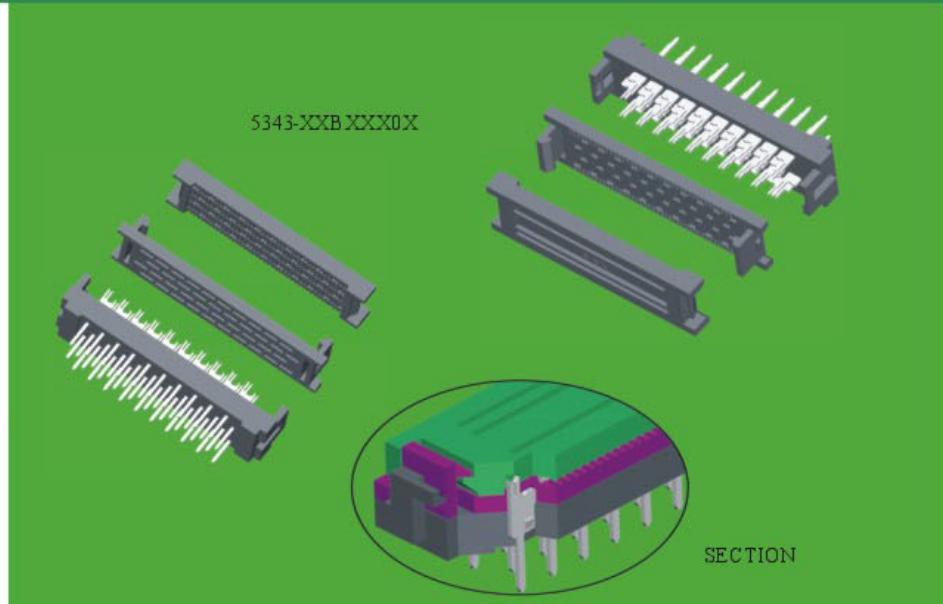
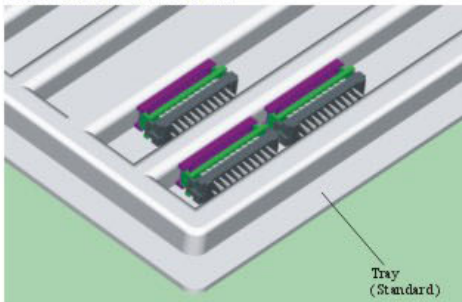


1. 27*2.54mm DIP Plug

SPECIFICATIONS



Current Rating: 1.0AMP
 Contact Resistance: 20mΩ Max.
 Insulation Resistance: 1000MΩ Min.
 Withstanding Voltage : 500V AC/Minute
 Operation Temperature: -40°C to +105°C
 Contact Material: Brass
 Contact plating: Au or Sn Over Ni
 Insulator Material: Polyester (UL94V-0)
 Standard: PBT+30%GF



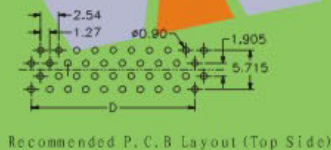
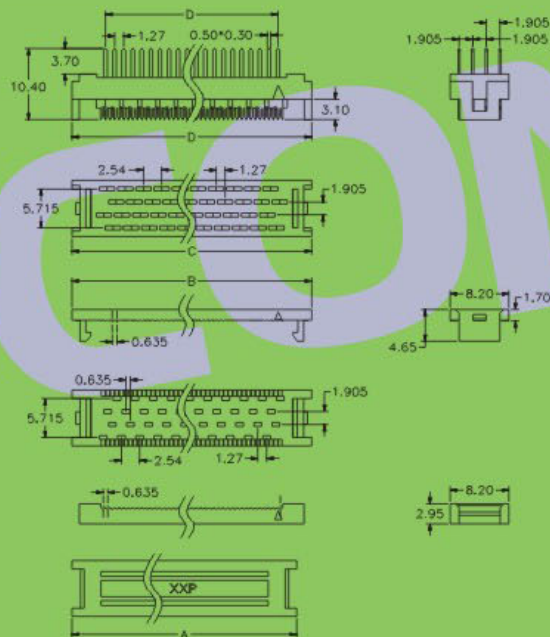
5343- XX B XX B

NO. OF PINS
 40, 60, 68
 80, 100

CONTACT PLATING
 G0: 1u" Gold S0: 1u" Gold/Tin
 G1: 3u" Gold S1: 3u" Gold/Tin
 G2: 5u" Gold S2: 5u" Gold/Tin
 G3: 10u" Gold S3: 10u" Gold/Tin
 G4: 15u" Gold S4: 15u" Gold/Tin
 G5: 30u" Gold S5: 30u" Gold/Tin
 G6: 20u" Gold S6: 20u" Gold/Tin
 SN: Tin

INSULATOR COLOUR
 B: Block G: Grey(427C)
 E: Grey(413C)

No. Of Position	DIM: "A"	DIM: "B"	DIM: "C"	DIM: "D"
40	31.42	33.50	33.50	24.13
60	44.20	46.20	46.20	36.83
68	49.20	51.40	51.18	41.91
80	56.82	59.00	58.90	49.53
100	69.60	71.60	71.60	62.23



※ INNOVATION AND DEVELOPMENT ※ CONTINUAL IMPROVEMENT ※ QUALITY FOREMOST ※ CUSTOMER SATISFACTION ※

Http:www.wafe-china.com E-mail:sales@wafe-china.com

WAFE DONGGUAN FAX:+86 769 85358915 TEL:+86 769 85358920
 WAFE KUNSHAN FAX:+86 512 57468468 TEL:+86 512 57468418