



CONTACT CLIP

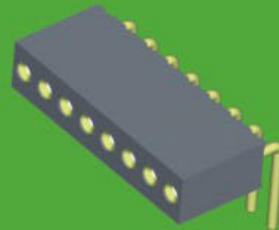
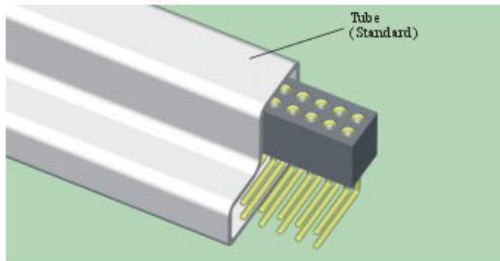


SLEEVE

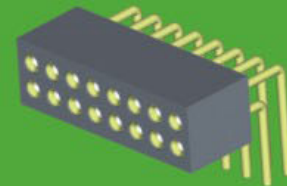
# 1. 27mm Machined Female Header

## SPECIFICATIONS

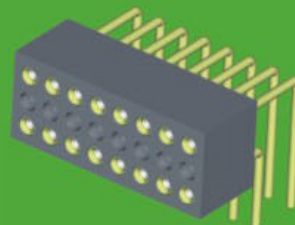
Insulator: Black glass filled polyester PPS+30%GF  
 Flammability: UL94V-0  
 Sleeve: Brass CuZn 36pb3(36000)  
 Contact clip(3 finger): Beryllium copper (C17200)  
 Mating pin $\phi$ : 0.38 to 0.50mm  
 Forces: (polished steel gauge  $\phi$ 0.41mm)  
 -Insertion: 0.5N typ. -Withdrawal: 0.2N typ.  
 Mechanical life :min 500 cycles  
 Rated current: 1.0A  
 Contact resistance: max 10m $\Omega$   
 Dielectric strength :min 500VRMS



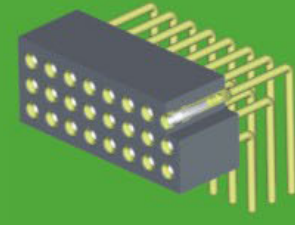
3524-381XXRXX089X1



3524-382XXRXX089X1



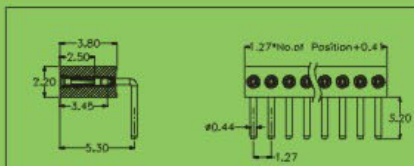
3525-382XXRXX089X1



3524-383XXRXX089X1

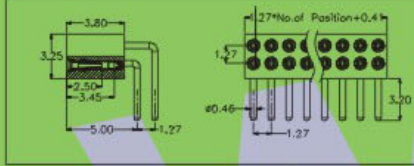
**3524-38 X XX R XX 089 X 1**

NO. OF ROW 1: Single Row 2: Double Row 3: Triple Row	NO. OF PINS PER ROW	CONTACT PLATING S0:1 $\mu$ ™ Gold/Tin S4:15 $\mu$ ™Gold/Tin S1:3 $\mu$ ™ Gold/Tin S5:30 $\mu$ ™Gold/Tin S2:5 $\mu$ ™ Gold/Tin S6:20 $\mu$ ™Gold/Tin S3:10 $\mu$ ™Gold/Tin S7:™ Tin	PACKING A:Tray T:Tube R:Tape & Reel 0: PE Bag
---	---------------------	--	--



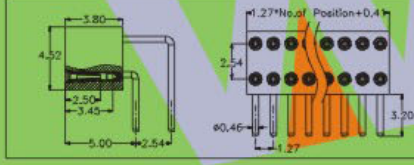
3524-381XXRXX089X1

Right angle socket connector:solder tail single row  
 Availability from:2 to 50 contacts  
 Standard number of contacts 25 and 50



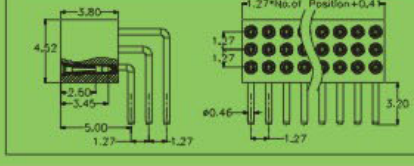
3524-382XXRXX089X1

Right angle socket connector:solder tail double row  
 Availability from:4 to 100 contacts  
 Standard number of contacts 50 and 100



3525-382XXRXX089X1

Right angle socket connector:solder tail double row with 2.54mm row to row distance  
 Availability from:4 to 100 contacts  
 Standard number of contacts 100



3524-383XXRXX089X1

Right angle receptacle:solder tail triple row  
 Availability from:6 to 150 contacts  
 Standard number of contacts 150

※ INNOVATION AND DEVELOPMENT ※ CONTINUAL IMPROVEMENT ※ QUALITY FOREMOST ※ CUSTOMER SATISFACTION ※

Http:www.wafe-china.com E-mail:sales@wafe-china.com

WAFE DONGGUAN FAX:+86 769 85358915 TEL:+86 769 85358920  
 WAFE KUNSHAN FAX:+86 512 57468468 TEL:+86 512 57468418