

# HSF

**NOTES:**

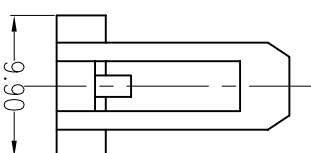
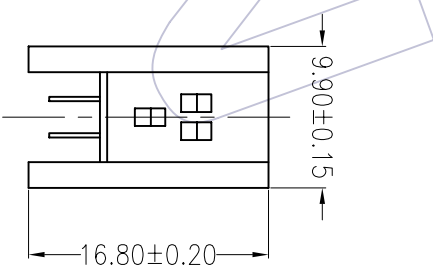
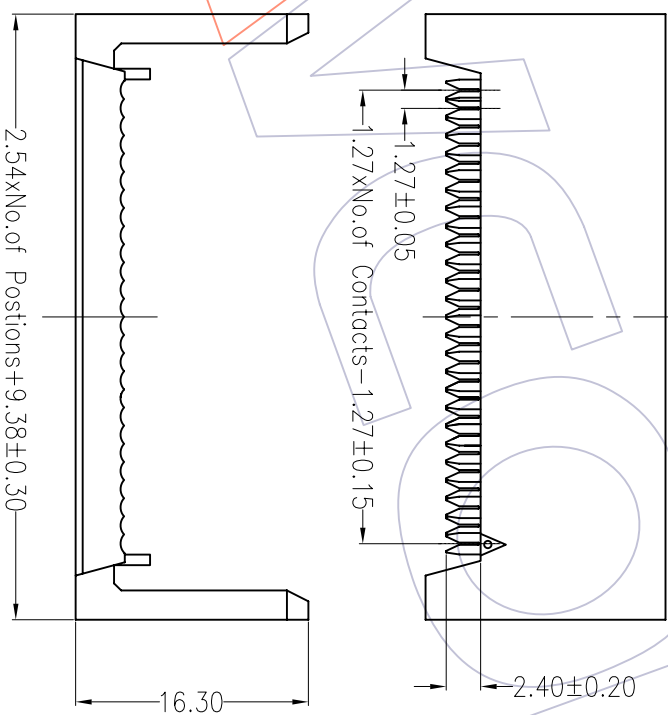
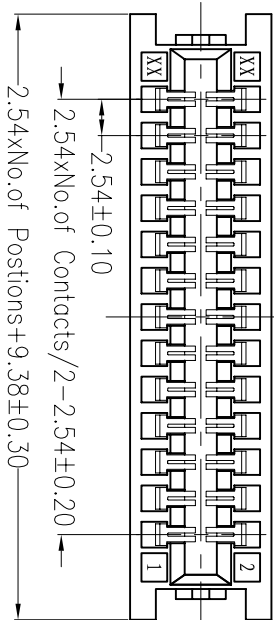
Current Rating:1.0A  
 Voltage Rating:250V AC,DC  
 Contact Resistance:20mΩ max  
 Withstand Voltage:500V AC/minute  
 Insulation Resistance:1000MΩ min  
 Operation Temperature:-25℃ to +85℃

Contact Material:Phosphor Bronze  
 Contact plating:Au Over Ni  
 Insulator Material:PBT+30%G.F.(UL94V-0)

## Ordering Information

5260 - XX B P XX B N X 1

- |             |                      |                   |              |           |
|-------------|----------------------|-------------------|--------------|-----------|
| No. of Pins | No. of Pins          | Contact Plating   | Color        | Packaging |
| 10P 34P     | A=With claspboard    | G0=Gold Flash     | B=Black      | A=Tray    |
| 14P 40P     | B=Without claspboard | G1=3u"Gold        | U=Blue       | T=Tube    |
| 16P 50P     |                      | G2=5u"Gold        | G=Grey(427C) |           |
| 20P 60P     |                      | G3=10u"Gold       | E=Grey(413C) |           |
| 26P 64P     |                      | G4=15u"Gold       |              |           |
|             |                      | G5=30u"Gold       |              |           |
|             |                      | S0=Gold Flash/Tin |              |           |
|             |                      | S1=3u"Gold/Tin    |              |           |
|             |                      | S2=5u"Gold/Tin    |              |           |
|             |                      | S3=10u"Gold/Tin   |              |           |
|             |                      | S4=15u"Gold/Tin   |              |           |
|             |                      | S5=30u"Gold/Tin   |              |           |
|             |                      | SN=Tin            |              |           |



REV	DATE	MODIFICATION DESCRIPTION	CHANGE	APPROVE	OPERATION	DRAW	WEIXD	SCALE	PART NO.
A0	08/11/25	NEW			XXX ±0.40	DESIGN	08.11.25	1:1	5260-XXBPXXBX1
					XXX ±0.25	CHECK		mm	CE SOCKET CONNECTOR
					XXX ±0.15			A4	
					Angle ± 3'			1/1	
					DIM TOL	APPROVE		PROJ.	Customer NO.

**WCON** 维峰五金电子有限公司  
 WAVE HARDWARE ELECTRONICS CO.,LTD