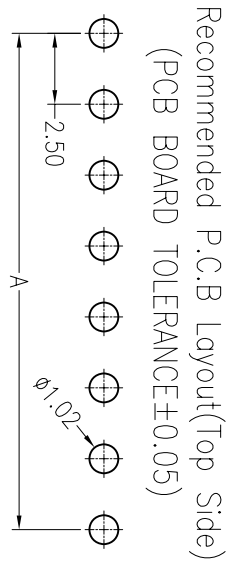


HSF

NOTES:

Rating Voltage:125V AC/DC
 Current Rating:1.0AMP
 Contact Resistance:20mΩ max
 Withstand Voltage:500V AC/DC
 Insulation Resistance:100MΩ min
 Operation Temperature:-25°C to +85°C

Contact Material:Phosphor bronze
 Contact plating:Au or Sn Over Ni
 Insulator Material:Nylon UL94V-0



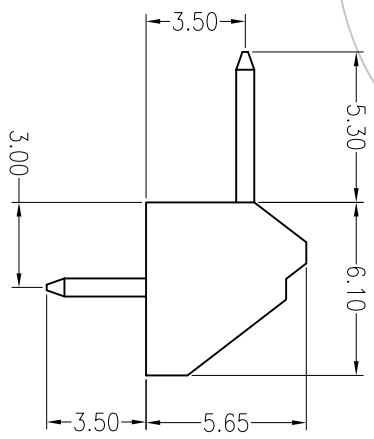
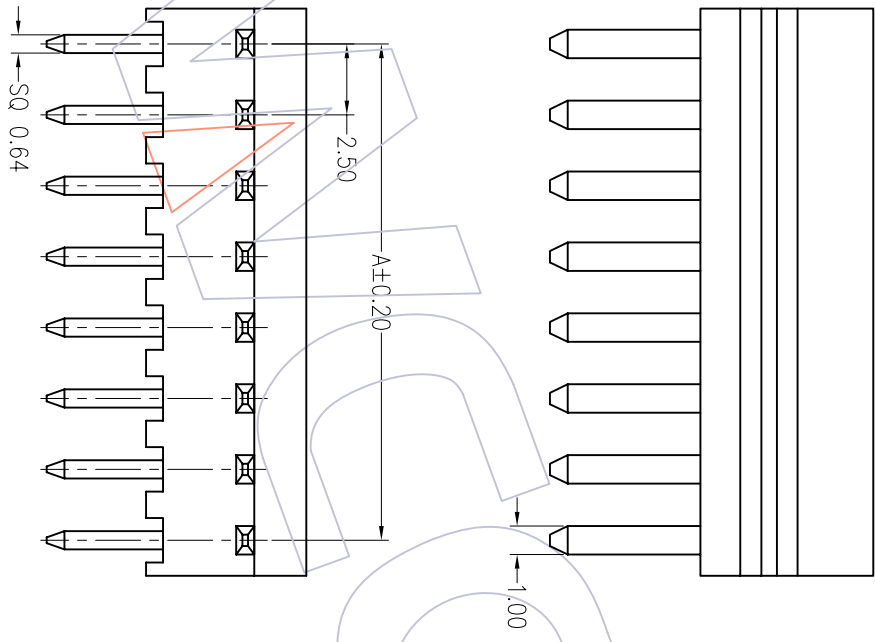
Specification & Ordering Information:

Circuit	Part No.	Dimension	
		A	
02	WF2508-WR02XX1	2.50	
03	WF2508-WR03XX1	5.00	
04	WF2508-WR04XX1	7.50	
05	WF2508-WR05XX1	10.00	
06	WF2508-WR06XX1	12.50	
07	WF2508-WR07XX1	15.00	
08	WF2508-WR08XX1	17.50	
09	WF2508-WR09XX1	20.00	
10	WF2508-WR10XX1	22.50	
11	WF2508-WR11XX1	25.00	
12	WF2508-WR12XX1	27.50	
13	WF2508-WR13XX1	30.00	
14	WF2508-WR14XX1	32.50	
15	WF2508-WR15XX1	35.00	
16	WF2508-WR16XX1	37.50	
17	WF2508-WR17XX1	40.00	
18	WF2508-WR18XX1	42.50	
19	WF2508-WR19XX1	45.00	
20	WF2508-WR20XX1	47.50	
21	WF2508-WR21XX1	50.00	
22	WF2508-WR22XX1	52.50	
23	WF2508-WR23XX1	55.00	
24	WF2508-WR24XX1	57.50	
25	WF2508-WR25XX1	60.00	

Ordering Information

WF 2508 - WR XX X X 1

No. of pins Color Packing
 02-25pin B=Black 0=PE Bag
 E=Beige A=Tray
 W=White T=Tube



WCON 维峰五金电子有限公司
 WAFE HARDWARE ELECTRONICS CO. LTD

SBE TAB

2.50mm WAFER 90° DIP

REV	DATE	MODIFICATION DESCRIPTION	CHANGE	APPROVE	OPERATION	DRAW	2011.04.04	08.08.06	SCALE	1:1	PART NO.
A0	08/08/06	NEW			X.XX X.XX X.XXX	DESIGN CHECK			UNIT SIZE	mm A4	
					Angle DIM	CHECK APPROVE			SHEET PROJ.	1/1	TITLE: Customer NO.