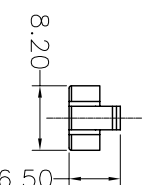
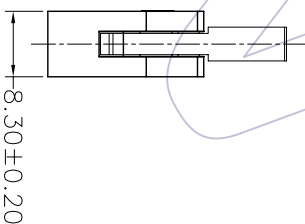
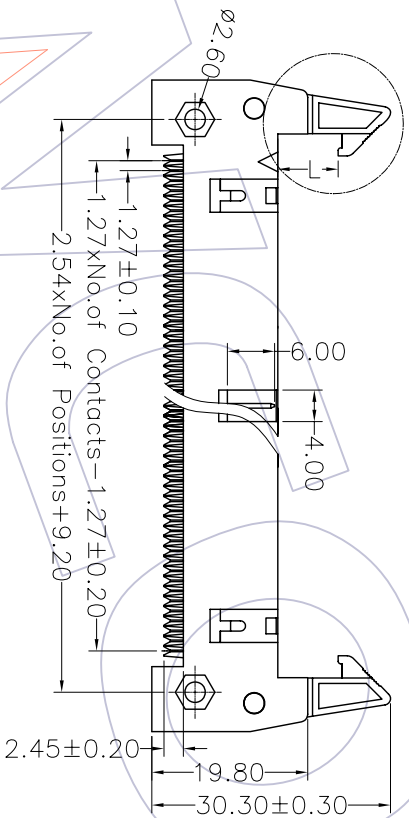
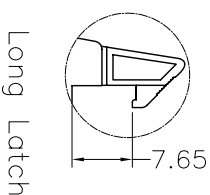
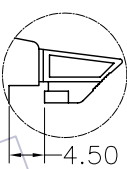
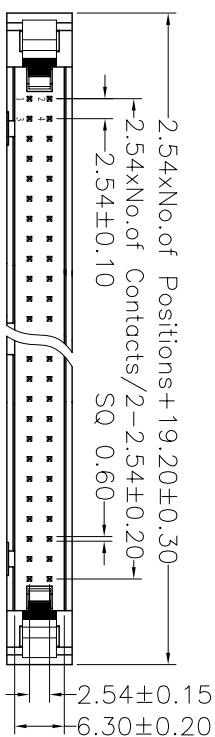


HSP

NOTES:

Current Rating: 3.0AMP
 Contact Resistance: 20mΩ Max
 Insulation Resistance: 1000MΩ Min
 Withstand Voltage: 1000V AC/Minute
 Operation Temperature: -40°C to +105°C

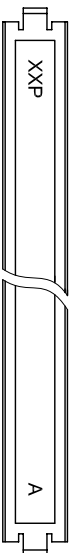
Contact Material: Brass
 Contact plating: Au Over Ni
 Insulator Material: PBT+30%GF(UL94V-0)



Ordering Information

3820 - XX XX N G X 0 1

- | | | | |
|-------------|-----------------|-----------------|-----------------|
| No. of Pins | Contact Plating | Insulator Color | Latch Type |
| 10 30 | G0=Gold Flash | G=Grey(427C) | L=Long Latch |
| 14 34 | G1=3u"Gold | E=Grey(413C) | S=Short Latch |
| 16 40 | G2=5u"Gold | B=Black | N=Without Latch |
| 20 50 | G3=10u"Gold | U=Blue | |
| 26 60 | G4=15u"Gold | | |
| 64 | G5=30u"Gold | | |
-
- | |
|------------------|
| S0=Gold Flash/Ni |
| S1=3u"Gold/Ni |
| S2=5u"Gold/Ni |
| S3=10u"Gold/Ni |
| S4=15u"Gold/Ni |
| S5=30u"Gold/Ni |



REV	DATE	MODIFICATION DESCRIPTION	CHANGE	APPROVE	OPERATION	DRAW	WEIXD	SCALE	PART NO.	TITLE:
A0	08/05/12	NEW			XXX ±0.40	DESIGN		1:1	3820-XXXXXXGX01	2.54 EJECTOR HEADER IDC TYPE
					XXX ±0.25	CHECK		A4		
					XXX ±0.15	CHECK		1/1		
					Angle ± 3'	APPROVE		PROJ.		Customer NO.

WCON 维峰五金电子有限公司
 WAFER HARDWARE ELECTRONICS CO.,LTD