



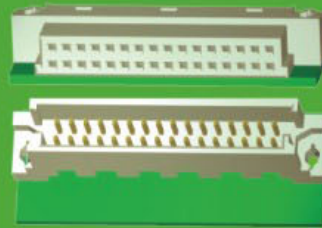
2. 54mm DIN 41612 Q Type Male And Female

SPECIFICATIONS

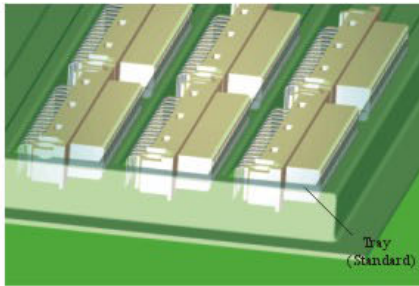


Current Rating: 3.0AMP
 Contact Resistance: 30mΩ Max.
 Insulation Resistance: 1000MΩ Min.
 Withstanding Voltage: 1000V AC/Minute
 Operation Temperature: -55°C to +105°C
 Contact Material: Brass/Phosphor Bronze
 Contact plating: Au or Sn Over Ni
 Insulator Material: Polyester (UL94V-0)
 Standard: PBT+30%GF

Q TYPE DIN41612 FEMALE 32PIN AND 64PIN



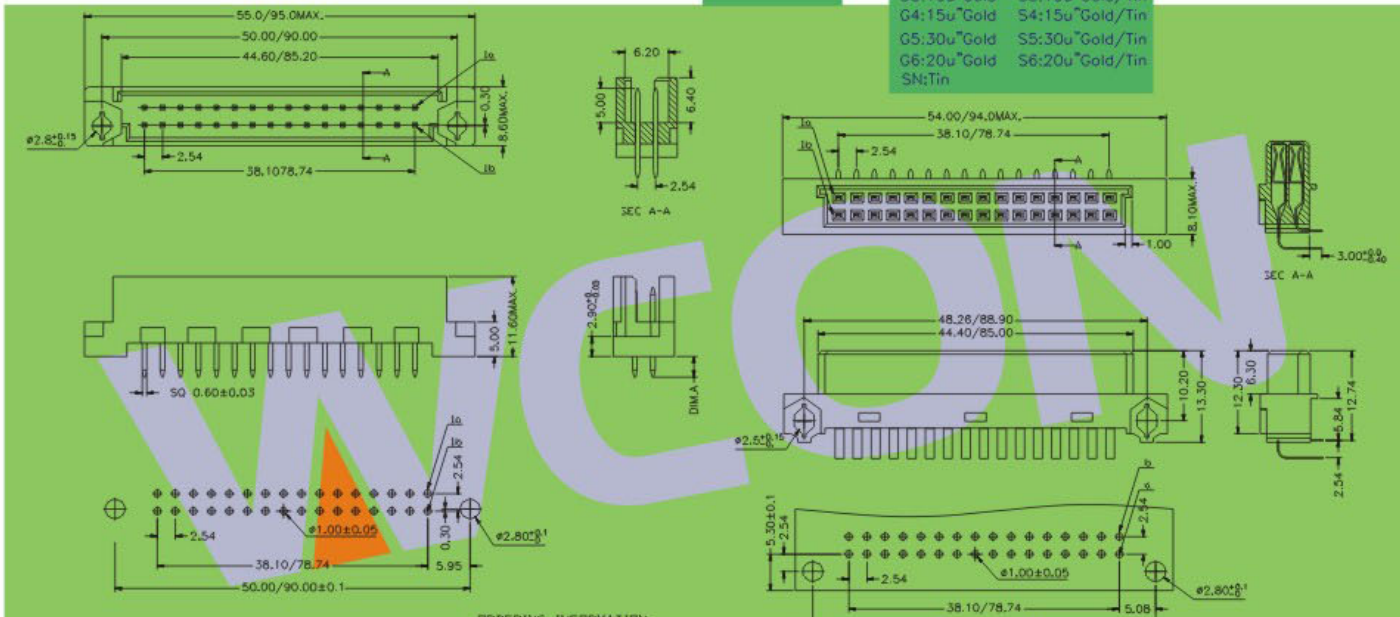
Q TYPEDIN MALE
 MATE FEMAL



Tray
 (Standard)

3410-2 XX X X X XX NA 1

NO. OF PINS 2X16P and 2x32P	TERMINAL ALLOT B=a+b D=a	TYPE F=Female M=Male	T TYPE S=180° R=90° P=PRESS FRT I=IDC TYPE	CONTACT PLATING G0:1u" Gold S0:1u" Gold/Tin G1:3u" Gold S1:3u" Gold/Tin G2:5u" Gold S2:5u" Gold/Tin G3:10u"Gold S3:10u"Gold/Tin G4:15u"Gold S4:15u"Gold/Tin G5:30u"Gold S5:30u"Gold/Tin G6:20u"Gold S6:20u"Gold/Tin SN:Tin
-----------------------------------	--------------------------------	----------------------------	--	--



ORDERING INFORMATION

NUMBER OF CONTACTS	ROWS/POSITIONS WITH CONTACT	PITCH
32	64 a+b	2.54mm
16	32 a	2.54mm
16	32 a+b ALL EVEN NO.	5.08mm HALF-LOADING

※ INNOVATION AND DEVELOPMENT ※ CONTINUAL IMPROVEMENT ※ QUALITY FOREMOST ※ CUSTOMER SATISFACTION ※

Http:www.wafe-china.com E-mail:sales@wafe-china.com

WAFE DONGGUAN FAX:+86 769 85358915 TEL:+86 769 85358920
 WAFE KUNSHAN FAX:+86 512 57468468 TEL:+86 512 57468418