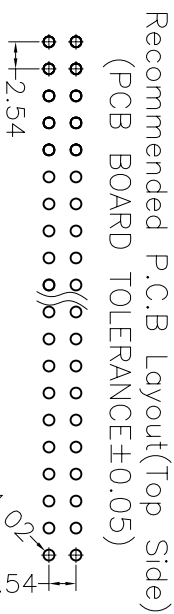
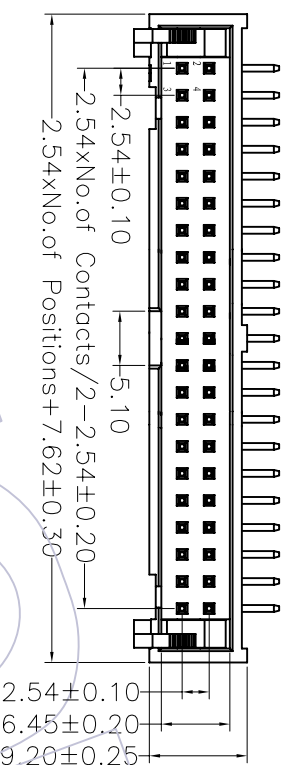


HSP

NOTES:

Current Rating: 3.0AMP
 Voltage Rating: 350V
 Contact Resistance: 20mΩ Max
 Insulation Resistance: 1000MΩ Min
 Withstand Voltage: 1000V AC/Minute
 Operation Temperature: -40°C to +105°C

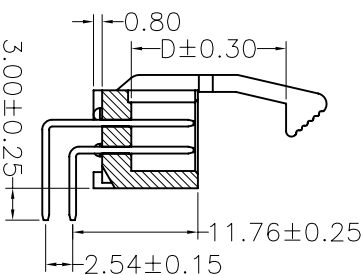
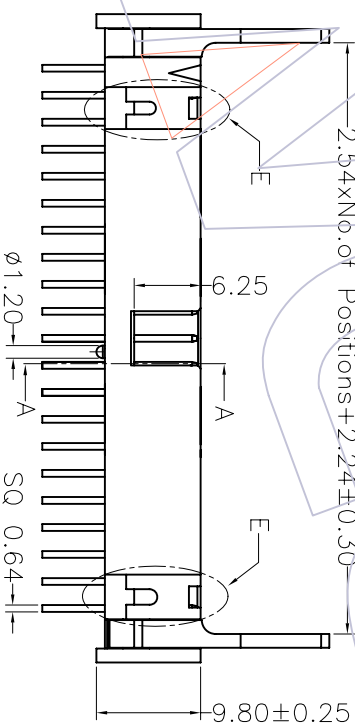
Contact Material: Brass
 Contact plating: Sn or Au Over Ni
 Latch Material: Zinc Alloy
 Latch plating: Ni
 Insulator Material: PBT or PA6T+30%GF(UL94V-0)
 Above 26 Poles With "E" Profile.



Ordering Information

3211 - XX R XX B XX I

No. of Pins	Contact Plating	Insulator Color	Latch Type	Packing
06 26	G0=Gold Flash	B=Black	L=Long Latch A=Tray	
08 30	G1=3u"Gold	U=Blue	S=Short Latch T=Tube	
10 34	G2=5u"Gold	G=Grey(427C)		
14 40	G3=10u"Gold	E=Grey(413C)		
16 50	G4=15u"Gold			
20 60	G5=30u"Gold			
64	S0=Gold Flash/Tin			
	S1=3u"Gold/Tin			
	S2=5u"Gold/Tin			
	S3=10u"Gold/Tin			
	S4=15u"Gold/Tin			
	S5=30u"Gold/Tin			
	SN=Tin			



Dimension antitheses list	
PART NO	D
3211-XXXXXXBLXI	14.55
3211-XXXXXXBSXI	10.65

REV	DATE	MODIFICATION DESCRIPTION	CHANGE	APPROVE	OPERATION	DRAW	WEIXD	SCALE	PART NO.	SHEET	TITLE:
A0	08/05/12	NEW			OPERATION X.X ±0.40 X.XX ±0.25 X.XXX ±0.15 Angle ± 3'	DESIGN CHECK	08/05/12	1:5:1 mm A4	3211-XXXXXXBLXI	1/1	2.54 ELECTOR HEADER 90° METAL LATCH H=9.8
REV	DATE	MODIFICATION DESCRIPTION	CHANGE	APPROVE	DIM TOL	APPORVE	PROU.	Customer NO.	SBE TAB		

WCON 维峰五金电子有限公司
 WAFE HARDWARE ELECTRONICS CO. LTD