

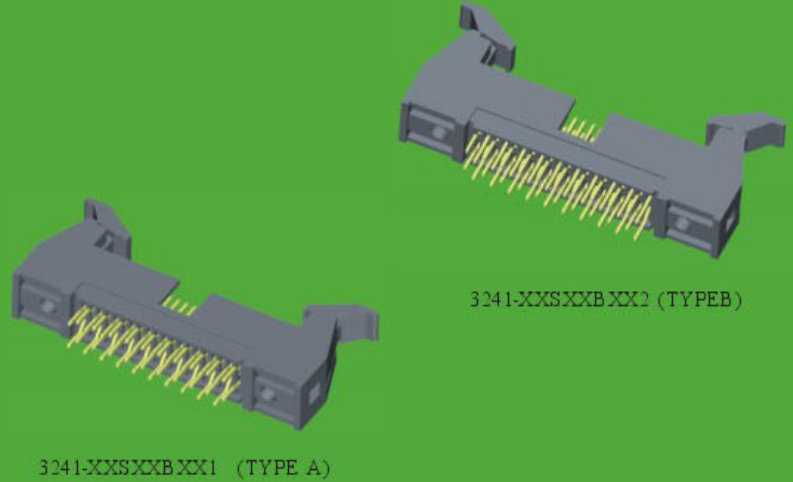
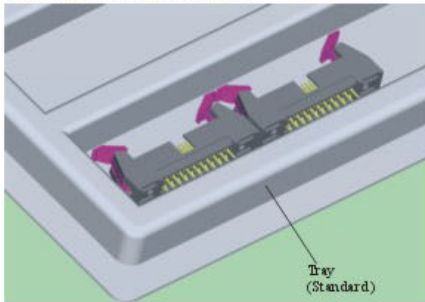
Mated With 5242 Series
 1.27*2.54 IDC Socket
 (With Polarization Bump)

1.27*2.54mm Ejector Header

SPECIFICATIONS



Current Rating: 1.0AMP
 Contact Resistance: 20mΩ Max.
 Insulation Resistance: 500MΩ Min.
 Withstanding Voltage :500V AC/Minute
 Operation Temperature: -40°C to +105°C
 Contact Material: Brass
 Contact plating: Au or Sn Over Ni
 Insulator Material: Polyester (UL94V-0)
 Standard: PA6T+30%GF



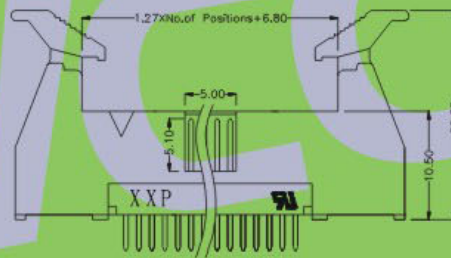
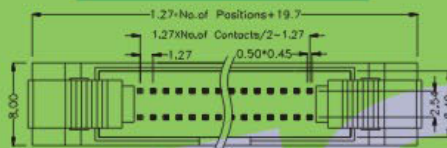
3241-XX S XX B X X X

NO.OF PINS
 06~64P

CONTACT PLATING
 G0:1u" Gold S0:1u" Gold/Tin
 G1:3u" Gold S1:3u" Gold/Tin
 G2:5u" Gold S2:5u" Gold/Tin
 G3:10u"Gold S3:10u"Gold/Tin
 G4:15u"Gold S4:15u"Gold/Tin
 G5:30u"Gold S5:30u"Gold/Tin
 G6:20u"Gold S6:20u"Gold/Tin
 SN:Tin

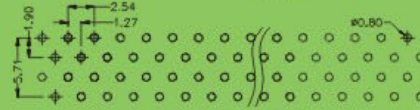
LATCH SHAPE
 L:Long Latch
 S:Short Latch
 N:No Latch

PACKING
 A:Tray T:Tube
 R:Tape & Reel



TYPE A

Recommended P, C, B Layout (Top Side)



TYPE B

※ INNOVATION AND DEVELOPMENT ※ CONTINUAL IMPROVEMENT ※ QUALITY FOREMOST ※ CUSTOMER SATISFACTION ※

Http:www.wafe-china.com E-mail:sales@wafe-china.com

WAFE DONGGUAN FAX:+86 769 85358915 TEL:+86 769 85358920
 WAFE KUNSHAN FAX:+86 512 57468468 TEL:+86 512 57468418