

HSF

NOTES:

Current Rating:1.5AMP
Contact Resistance:20mΩ max
Withstand Voltage:500V AC/DC
Insulation Resistance:1000MΩ min
Operation Temperature:-40°C to +105°C

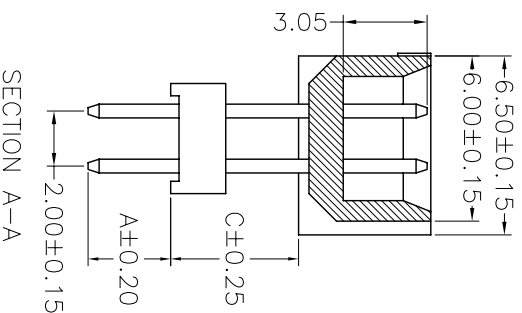
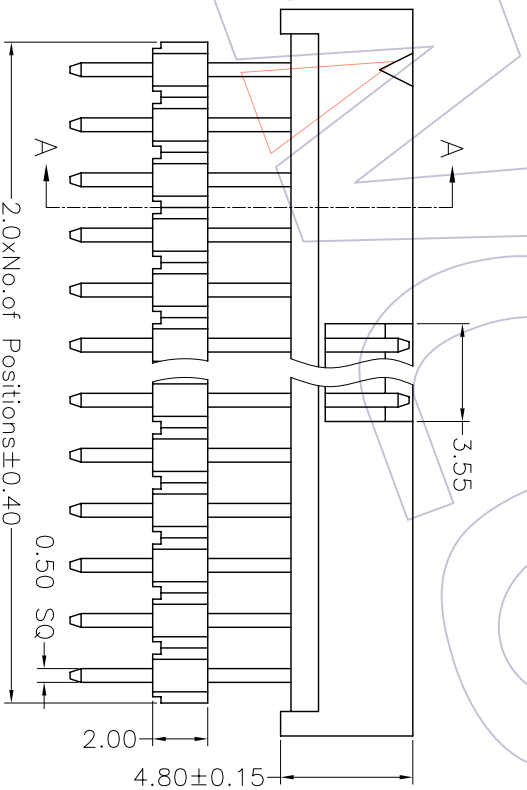
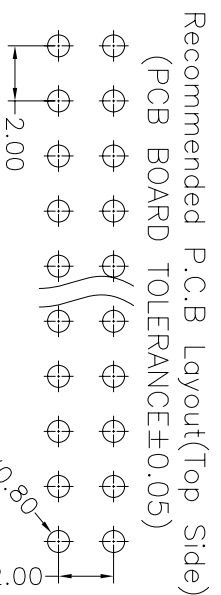
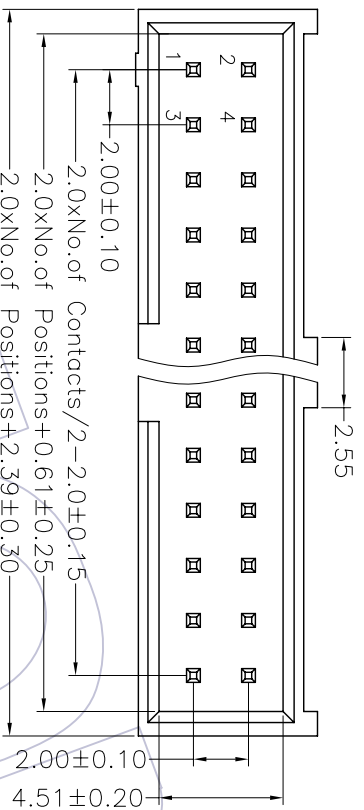
Contact Material:Brass
Contact plating:Au or Sn Over Ni
Insulator Material:LCF+30%GF(UL94V-0)

Ordering Information

3124-XX S XX B D00 X 2

No. of Pins	Contact Plating	Color Insulator	Packing
10 30	G0=Gold Flash	B=Black	A=Tray
14 34	G1=3u"Gold	U=Blue	T=Tube
16 40	G2=5u"Gold	W=White	
20 44	G3=10u"Gold		
24 50	G4=15u"Gold		
26 60	G5=30u"Gold		

S0=Gold Flash/Tin
S1=3u"Gold/Tin
S2=5u"Gold/Tin
S3=10u"Gold/Tin
S4=15u"Gold/Tin
S5=30u"Gold/Tin
SN=Tin



Dimension antitheses list			
ITEM	A	C	
Standard	3.00		
Alternate			

REV	DATE	MODIFICATION DESCRIPTION	CHANGE	APPROVE	OPERATION	DRAW	WEIXD	SCALE	UNIT	SIZE	PART NO.	TITLE:	PROJ.	CUSTOMER NO.
A0	08/05/06	NEW			OPERATION X.X ±0.40	DESIGN X.XXX ±0.25	08/05/06	4:1	mm	A4	3124-XXSXXBD00X2	2.00 BOX HEADER 180° H=4.8 SAMTEC (SHORT TYPE) ADD HOUSING		
					Angle X.XXX ± 3'	CHECK X.XXX ±0.15								
					DIM	APPROVE								

WCON 维峰五金电子有限公司
WAFE HARDWARE ELECTRONICS CO. LTD

3124-XXSXXBD00X2
2.00 BOX HEADER 180° H=4.8
SAMTEC (SHORT TYPE) ADD HOUSING