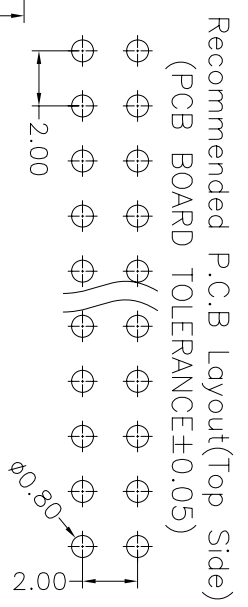
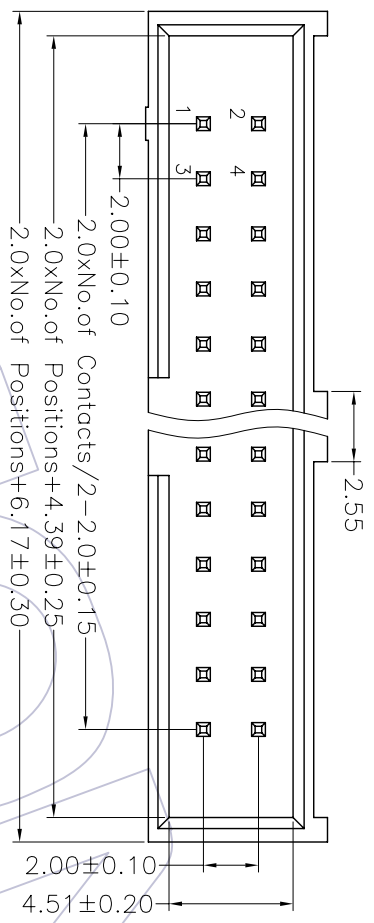




NOTES:

Current Rating: 1.5AMP
 Contact Resistance: 20mΩ max
 Withstand Voltage: 500V AC/DC
 Insulation Resistance: 1000MΩ min
 Operation Temperature: -40°C to +105°C

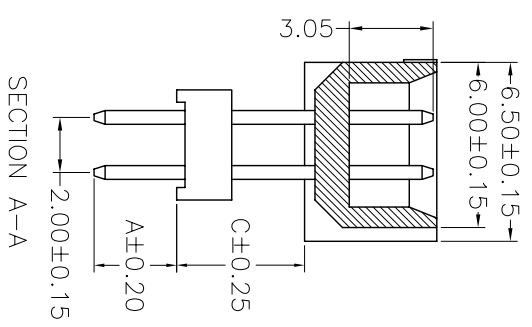
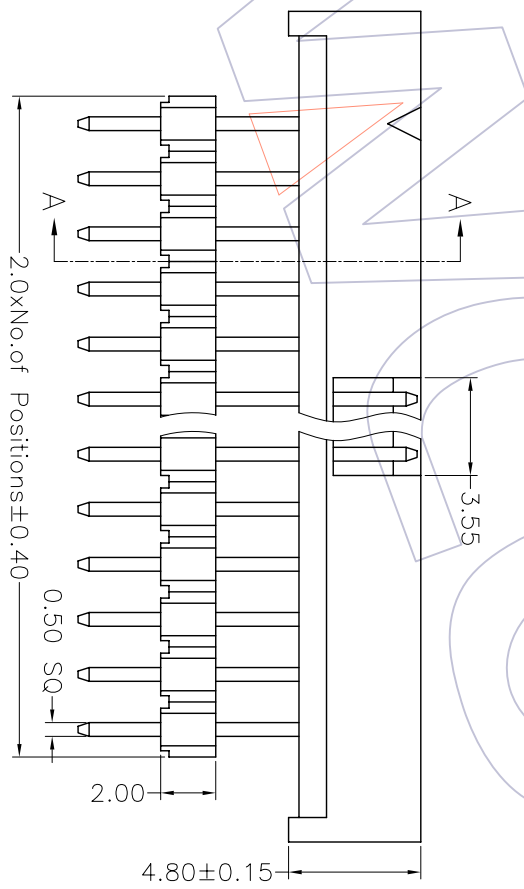
Contact Material: Brass
 Contact plating: Au or Sn Over Ni
 Insulator Material: LCP + 30%GF (UL94V-0)



Ordering Information

3124-XX S XX B D00 X 1

- | | | | |
|-------------|-------------------|-----------------|-----------|
| No. of Pins | Contact Plating | Color Insulator | Packaging |
| 10 30 | G0=Gold Flash | B=Black | A=Tray |
| 14 34 | G1=3u"Gold | U=Blue | T=Tube |
| 16 40 | G2=5u"Gold | W=White | |
| 20 44 | G3=10u"Gold | | |
| 24 50 | G4=15u"Gold | | |
| 26 60 | G5=30u"Gold | | |
| | S0=Gold Flash/Tin | | |
| | S1=3u"Gold/Tin | | |
| | S2=5u"Gold/Tin | | |
| | S3=10u"Gold/Tin | | |
| | S4=15u"Gold/Tin | | |
| | S5=30u"Gold/Tin | | |
| | SN=Tin | | |



Dimension antitheses list			
ITEM	A	C	
Standard	3.00		
Alternate			

REV	DATE	MODIFICATION DESCRIPTION	CHANGE	APPROVE	OPERATION	DRAW	WEIXD	08/05/06	SCALE	4:1	PART NO.	3124-XXSXXBD00X1
A0	08/05/06	NEW			DESIGN	CHECK			UNIT	mm	TITLE:	2.00 BOX HEADER 180° H=4.8 SAMTEC (LONG TYPE) ADD HOUSING
REV	DATE	MODIFICATION DESCRIPTION	CHANGE	APPROVE	OPERATION	DRAW	WEIXD	08/05/06	SCALE	4:1	PART NO.	3124-XXSXXBD00X1
					DESIGN	CHECK			UNIT	mm	TITLE:	2.00 BOX HEADER 180° H=4.8 SAMTEC (LONG TYPE) ADD HOUSING

WCON 维峰五金电子有限公司
 WAFER HARDWARE ELECTRONICS CO., LTD