

HSF

NOTES:

Rated Current:3.0AMP
 Contact Resistance:20mΩ max
 Withstand Voltage:1000V AC/DC
 Insulation Resistance:1000MΩ min
 Operation Temperature:-40°C to +105°C

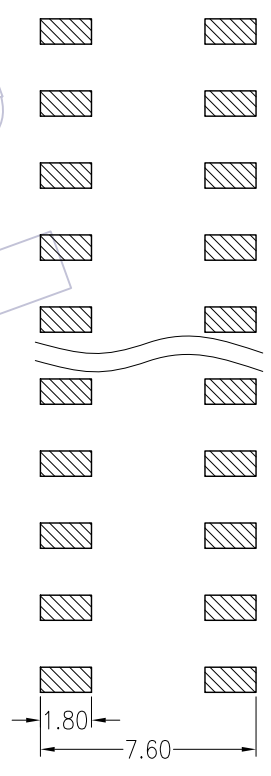
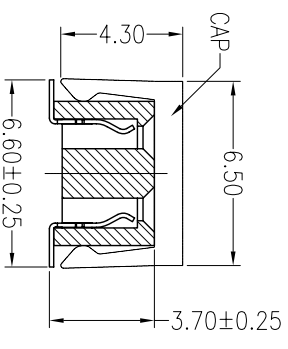
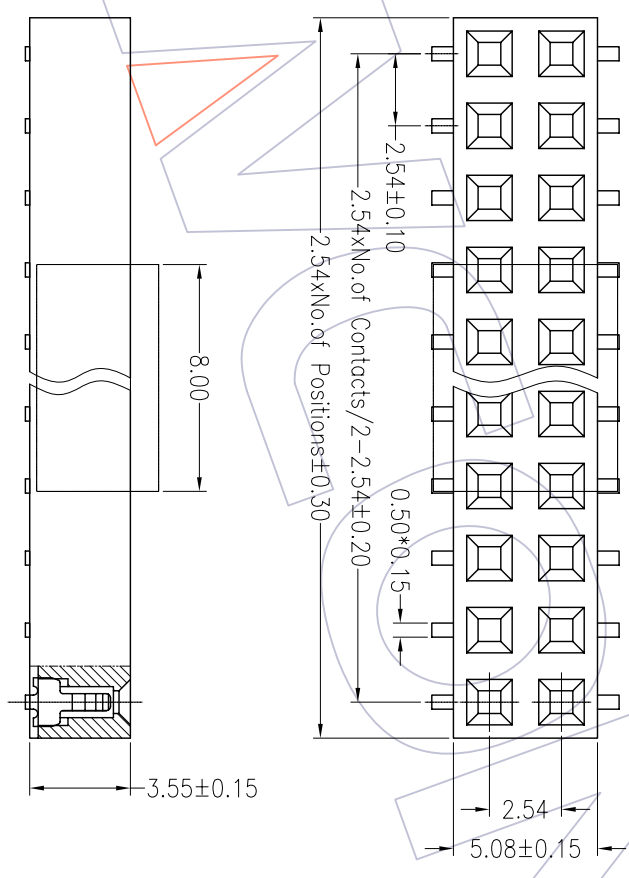
Contact Material:Phosphor Bronze
 Contact Plating:Au or Sn Over Ni
 Insulator Material:PA6T+30%G.F UL94V-0

Ordering Information

2135-2 XX M XX CTN X 1

- No.of Pins per Row: 03-40
- Contact Plating: G0=Gold Flash
- Gold Flash: G1=3u"Gold
- G2=5u"Gold
- G3=10u"Gold
- G4=15u"Gold
- G5=30u"Gold
- Gold Flash/Tin: S0=Gold Flash/Tin
- S1=3u"Gold/Tin
- S2=5u"Gold/Tin
- S3=10u"Gold/Tin
- S4=15u"Gold/Tin
- S5=30u"Gold/Tin
- Tin: SN=Tin

- Packaging: T=Tube
- P=Tube+CAP
- R=Tape&Reel+CAP



Recommended P.C.B Layout(Top Side)
 (PCB BOARD TOLERANCE±0.05)

REV	DATE	MODIFICATION DESCRIPTION	CHANGE	APPROVE	OPERATION		DRAW	Millennium Class	08.11.11	SCALE		PART NO.	TITLE:
					Angle	± 3'				UNIT	1:1		
A0	08/11/11	NEW			X.X	±0.40	DESIGN			mm	A4	2135-2XXMXXCTNX1	PH2.54 DUAL ROW SMT H=3.5 T-TYPE
					X.XX	±0.25	CHECK				1/1		Customer NO.
					X.XXX	±0.15							
					DM	TOL	APPROVE						

WCON 维峰五金电子有限公司
 WAFE HARDWARE ELECTRONICS CO.,LTD