

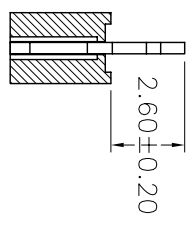
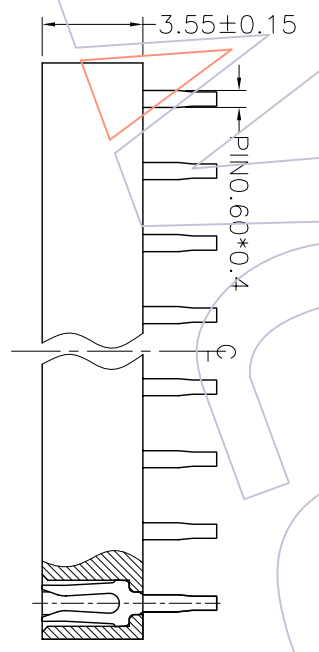
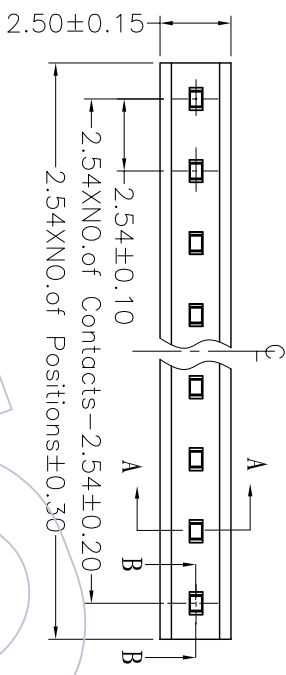
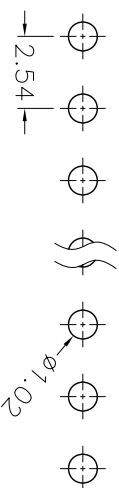
# HSH

Recommended P.C.B Layout(TOP Side)  
(PCB BOARD TOLERANCE±0.05)

**NOTES:**

Current Rating: 3.0AMP  
Withstand Voltage: 500V AC/DC  
Contact Resistance: 20mΩ Max  
Insulation Resistance: 1000MΩMin  
Operation Temperature: -40°C to +105°C

Contact Material: Phosphor Bronze or Brass  
Contact plating: Au or Sn over Ni  
Insulator Material: PA6T or PBT+30%G.F UL94V-0



## Ordering Information

2135T-1XX SXX XYN T1

No. of Pins per ROW: 42~40Pin  
Contact Plating: Insulator:  
A=PBT C=PA6T  
Gold Flash  
G0=3μ"Gold  
G1=3μ"Gold  
G2=5μ"Gold  
G3=10μ"Gold  
G4=15μ"Gold  
G5=30μ"Gold  
S0=Gold Flash/Tin  
S1=3μ"Gold/Tin  
S2=5μ"Gold/Tin  
S3=10μ"Gold/Tin  
S4=15μ"Gold/Tin  
S5=30μ"Gold/Tin  
SN=Tin

Packing:  
T=Tube

REV	DATE	MODIFICATION DESCRIPTION	CHANGE	APPROVE	OPERATION	DRAW	WEIXD	SCALE	PART NO.	TITLE:
A0	08/03/01	NEW			XXX ±0.40	DESIGN		4:1	2135T-1XXSXXYYNT1	FH2.54 SINGLE 180° H=3.5
					XXX ±0.25	CHECK		mm		
					XXX ±0.15	APPROVE		A4		
					Angle ± 3'			1/1		
					DIM TOL			PROJ.	Customer NO.	

**WCON** 维峰五金电子有限公司  
WAVE HARDWARE ELECTRONICS CO.,LTD