

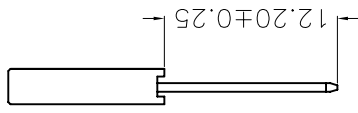
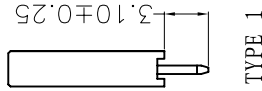
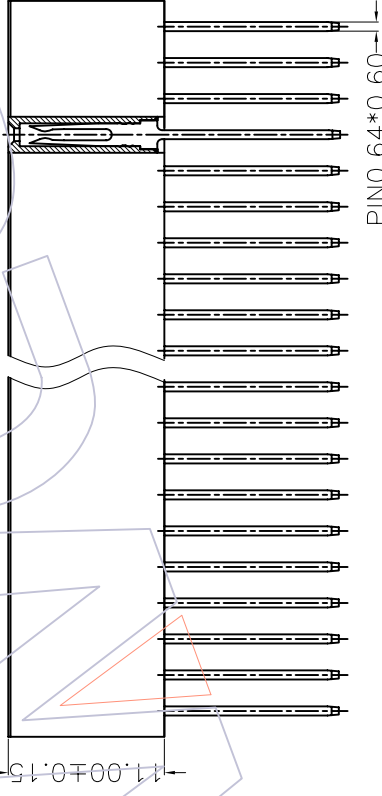
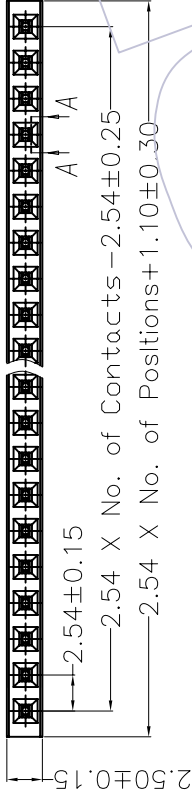
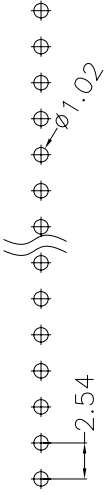
HSF

Recommended P.C.B Layout(Top Side)
(PCB BOARD TOLERANCE±0.05)

NOTES:

Current Rating: 3.0AMP
Withstand Voltage: 500V AC/DC
Contact Resistance: 20mΩ Max
Insulation Resistance: 1000MΩMin
Operation Temperature: -40C to +105C

Contact Material: Brass
Contact plating: Au or Sn over Ni
Insulator Material: PBT or PA6T+30%G, F UL94V-0



Ordering Information

2111A - 1 XX S XX X YN X X

No. of Pins per ROW: 02-32P
Contact Plating: G=Gold Flash A=PBT C=PA6T
Insulator: A=PBT T=Tube
Packing: S=Series No. I=TYPE 1 I=TYPE 2
Plating: G1=5µ"Gold G2=5µ"Gold G3=10µ"Gold G4=15µ"Gold G5=30µ"Gold
Solder: S1=3µ"Gold/Tin S2=5µ"Gold/Tin S3=10µ"Gold/Tin S4=15µ"Gold/Tin S5=30µ"Gold/Tin
SV=Tin

SECTION A-A

TYPE 2

| TITLE | PART NO. |
|--------|------------------|
| TYPE 1 | 2111A-1XXSXXYNX1 |
| TYPE 2 | 2111A-1XXSXXYNX2 |

| | | | | | | | | | |
|----------------|--|--------------------------|--|-------|-----|--------------|--|---|--|
| | | 08.07.04 | | SCALE | 2:1 | | | WCON 维峰五金电子有限公司 WAFE HARDWARE ELECTRONICS CO.,LTD | |
| | | OPERATION | | UNIT | mm | PART NO. | | SEE TABLE | |
| | | X.X ±0.40 | | SIZE | A4 | TITLE: | | 2.54 FEMALE IH=11.0 | |
| | | X.XX ±0.25 | | PROJ. | ☑ | Customer NO. | | | |
| | | X.XXX ±0.15 | | | | | | | |
| A0 08/07/04 | | Angle ±.3° | | | | | | | |
| REV DATE | | MODIFICATION DESCRIPTION | | | | | | | |
| CHANGE APPROVE | | APPROVE | | | | | | | |