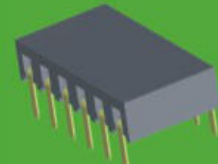


2134-1XXMXXXUNX1



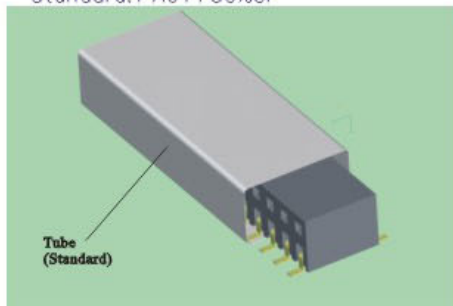
2134-1XXRXXXUNX1

## 2. 54mm Female Header, Single/Dual Row

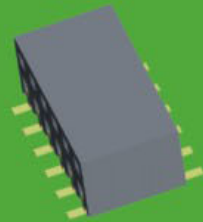
### SPECIFICATIONS



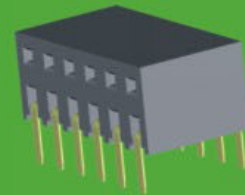
Current Rating: 3.0AMP  
 Contact Resistance: 20m  $\Omega$  Max.  
 Insulation Resistance: 1000M  $\Omega$  Min.  
 Withstanding Voltage :1000V AC/Minute  
 Operation Temperature: -40°C to +105°C  
 Contact Material: Phosphor Bronze  
 Contact plating: Au or Sn Over Ni  
 Insulator Material: Polyester (UL94V-0)  
 Standard: PA6T+30%GF



Tube  
(Standard)



2159-2XXMXXXUNX1



2159-2XXRXXXUNX1

## 21XX-X XX X XX X UN X 1

HEIGHT OF HOUSING  
 34:3.40  
 59:5.90

NO.OF ROW  
 1:Single Row  
 2:Dual Row

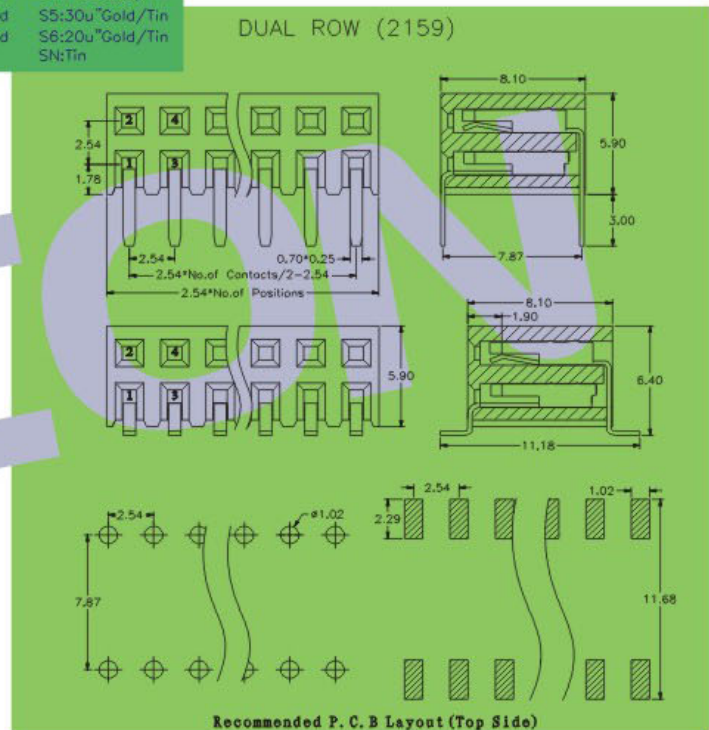
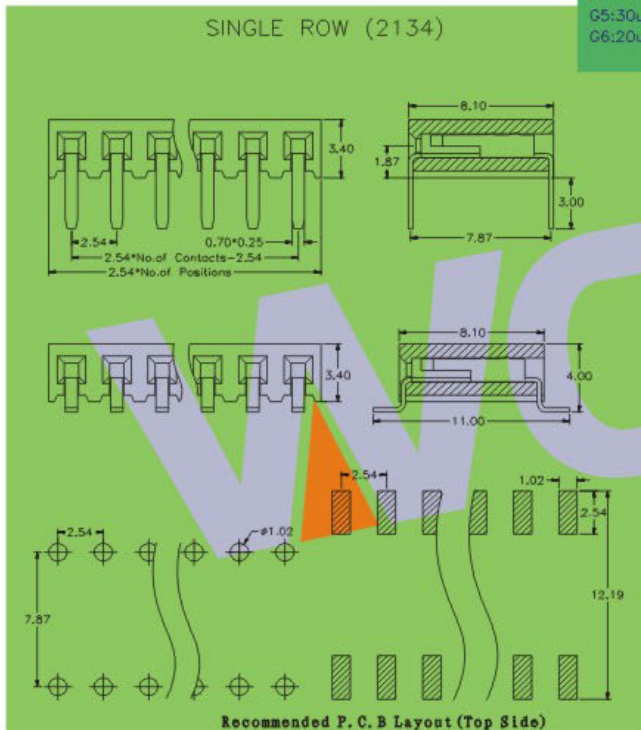
NO.OF PINS PER ROW  
 02~40P

CONTACT SHAPE  
 R:Right Angle  
 M:180°SMT

CONTACT PLATING  
 G0:1u" Gold S0:1u" Gold/Tin  
 G1:3u" Gold S1:3u" Gold/Tin  
 G2:5u" Gold S2:5u" Gold/Tin  
 G3:10u"Gold S3:10u"Gold/Tin  
 G4:15u"Gold S4:15u"Gold/Tin  
 G5:30u"Gold S5:30u"Gold/Tin  
 G6:20u"Gold S6:20u"Gold/Tin  
 SN:Sn

INSULATOR MATERIAL  
 A:PBT  
 C:PA6T  
 D:LCP

PACKING  
 T:Tube  
 R:Tape & Reel



※ INNOVATION AND DEVELOPMENT ※ CONTINUAL IMPROVEMENT ※ QUALITY FOREMOST ※ CUSTOMER SATISFACTION ※

Http:www.wafe-china.com E-mail:sales@wafe-china.com

WAFE DONGGUAN FAX:+86 769 85358915 TEL:+86 769 85358920  
 WAFE KUNSHAN FAX:+86 512 57468468 TEL:+86 512 57468418