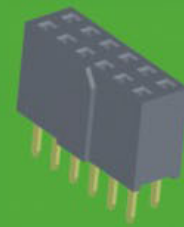


2185-2XXRXXXYNX3



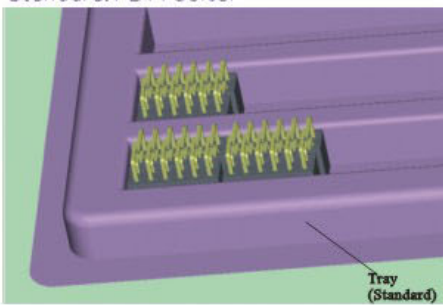
2185-2XXSXXXYNX3

2.54mm Female Header, Dual Row

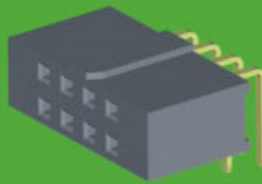
SPECIFICATIONS



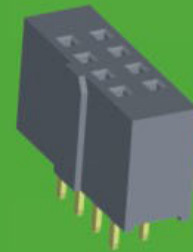
Current Rating: 3.0AMP
 Contact Resistance: 20mΩ Max.
 Insulation Resistance: 1000MΩ Min.
 Withstanding Voltage :1000V AC/Minute
 Operation Temperature: -40°C to +105°C
 Contact Material: Brass/Phosphor Brass
 Contact plating: Au or Sn Over Ni
 Insulator Material: Polyester (UL94V-0)
 Standard: PBT+30%GF



Tray
(Standard)



2185-2XXRXXXYNX5



2185-2XXSXXXYNX5

2185-2 XX X XX X YN X X

NO.OF PINS
PER ROW
02~40P

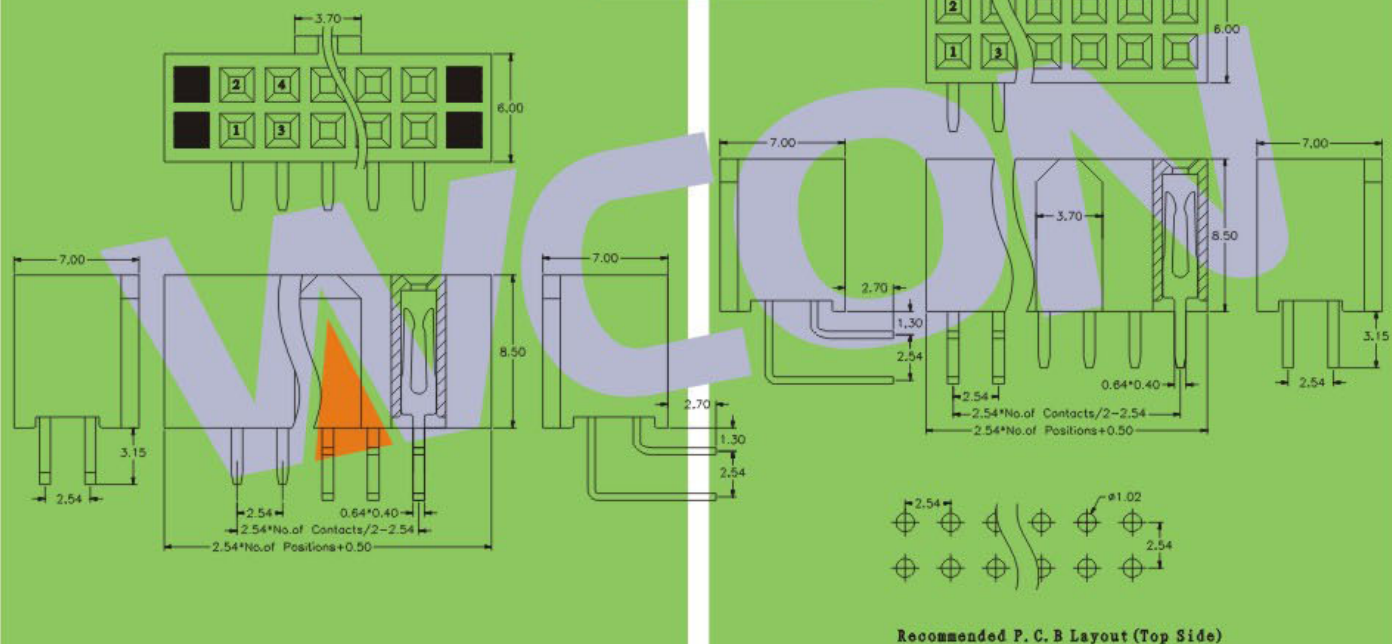
CONTACT SHAPE
S: Straight
R: Right Angle

CONTACT PLATING
 G0: 1u" Gold S0: 1u" Gold/Tin
 G1: 3u" Gold S1: 3u" Gold/Tin
 G2: 5u" Gold S2: 5u" Gold/Tin
 G3: 10u" Gold S3: 10u" Gold/Tin
 G4: 15u" Gold S4: 15u" Gold/Tin
 G5: 30u" Gold S5: 30u" Gold/Tin
 G6: 20u" Gold S6: 20u" Gold/Tin
 SN: Tin

INSULATOR MATERIAL
A: PBT
C: PA6T
D: LCP

PACKING
A: Tray T: Tube

Blocked 2 Pin In Front And Back



※ INNOVATION AND DEVELOPMENT ※ CONTINUAL IMPROVEMENT ※ QUALITY FOREMOST ※ CUSTOMER SATISFACTION ※

Http:www.wafe-china.com E-mail:sales@wafe-china.com

WAFE DONGGUAN FAX:+86 769 85358915 TEL:+86 769 85358920
 WAFE KUNSHAN FAX:+86 512 57468468 TEL:+86 512 57468418