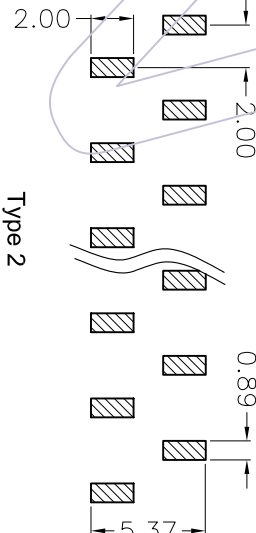
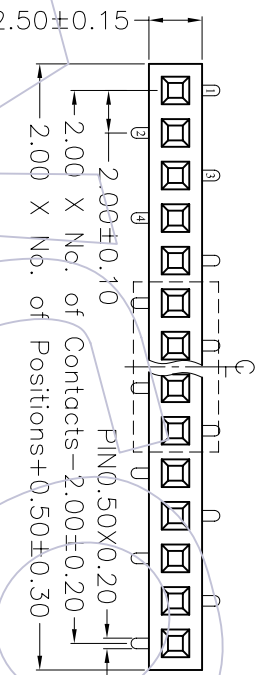
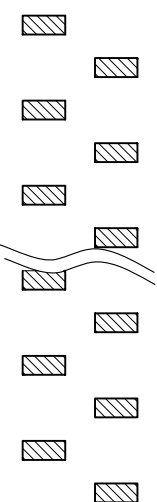
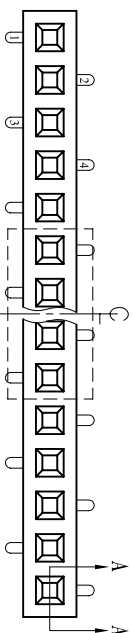


# HSPF

Recommended P.C.B Layout(Top Side)  
(PCB BOARD TOLERANCE±0.05)

NOTES:  
Current Rating: 2.0AMP  
Withstand Voltage: 500V AC/DC  
Contact Resistance: 20mΩ Max  
Insulation Resistance: 1000MΩ Min  
Operation Temperature: -40°C to +105°C

Contact Material: Phosphor Bronze  
Contact plating: Au or Sn over Ni  
Insulator Material: PA6T+30%G. F UL94V-0



## Ordering Information

2240 - 1 XX M XX CUNT X

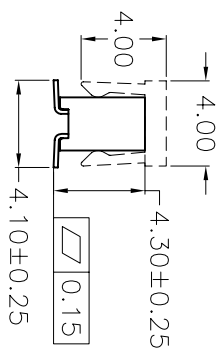
No. of Pins per ROW: 02~40PIN

Contact Plating:  
G0=Gold Flash  
G1=3μ"Gold  
G2=5μ"Gold  
G3=10μ"Gold  
G4=15μ"Gold  
G5=30μ"Gold  
S0=Gold Flash/Tin  
S1=3μ"Gold/Tin  
S2=5μ"Gold/Tin  
S3=10μ"Gold/Tin  
S4=15μ"Gold/Tin  
S5=30μ"Gold/Tin  
SN=Tin

Packing:  
T=Tube  
R=Tube&Reel  
P=Tube+CAP

Series No.  
1=TYPE 1  
2=TYPE 2

SECTION A-A



TITLE	PART NO.
TYPE 1	2240-1XXMXXCUNT1
TYPE 2	2240-1XXMXXCUNT2

REV	DATE	MODIFICATION DESCRIPTION	CHANGE APPROVE
A0	08/02/28	NEW	

OPERATION	DRAW	SCALE	UNIT	PART NO.
X.X	<i>Mallig</i>	3:1	mm	<b>WCON</b> 维峰五金电子有限公司 WAFE HARDWARE ELECTRONICS CO. LTD
X.XX	DESIGN		A4	SEE TABLE
X.XXX	CHECK		1/1	FIG. 00mm SINGLE SMT Hr-4.00
Angle	APPROVE		PROJ.	Customer NO.
± 3'				