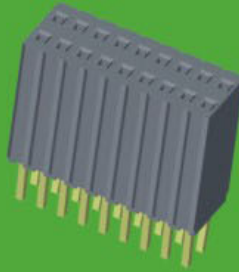
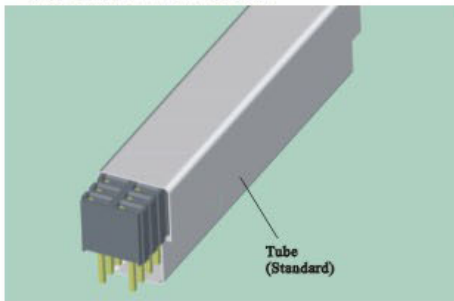


1. 27mm Female Header, Single/Dual Row

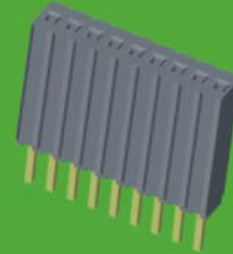
SPECIFICATIONS



Current Rating: 1.0AMP
 Contact Resistance: 20mΩ Max.
 Insulation Resistance: 1000MΩ Min.
 Withstanding Voltage : 500V AC/Minute
 Operation Temperature: -55°C to +125°C
 Contact Material: Phosphor Bronze
 Contact plating: Au or Sn Over Ni
 Insulator Material: Polyester (UL94V-0)
 Standard: PA6T+30%GF



2485-2XXSXXXYNX1



2385-1XXSXXXYNX1

2X85-X XX S XX X YN X 1

PITCH
 3: 1.27
 4: 1.27*2.54

NO. OF ROW
 1: Single Row
 2: Dual Row

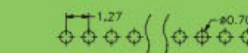
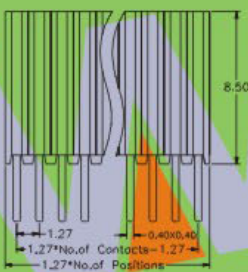
NO. OF PINS PER ROW
 02~50P

CONTACT PLATING
 G0: 1u" Gold S0: 1u" Gold/Tin
 G1: 3u" Gold S1: 3u" Gold/Tin
 G2: 5u" Gold S2: 5u" Gold/Tin
 G3: 10u" Gold S3: 10u" Gold/Tin
 G4: 15u" Gold S4: 15u" Gold/Tin
 G5: 30u" Gold S5: 30u" Gold/Tin
 G6: 20u" Gold S6: 20u" Gold/Tin
 SN: Tin

INSULATOR MATERIAL
 C: PA6T
 D: LCP

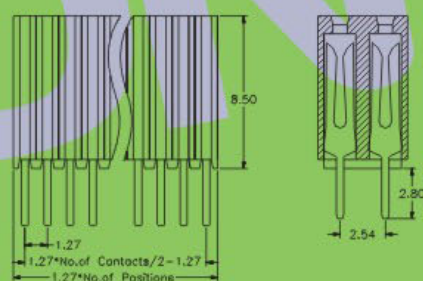
PACKING
 T: Tube
 R: Tape & Reel
 P: Tube+CAP

SINGLE ROW 2385 SERIES



Recommended P. C. B Layout (Top Side)

DUAL ROW 2485 SERIES



Recommended P. C. B Layout (Top Side)

※ INNOVATION AND DEVELOPMENT ※ CONTINUAL IMPROVEMENT ※ QUALITY FOREMOST ※ CUSTOMER SATISFACTION ※

Http:www.wafe-china.com E-mail:sales@wafe-china.com

WAFE DONGGUAN FAX:+86 769 85358915 TEL:+86 769 85358920
 WAFE KUNSHAN FAX:+86 512 57468468 TEL:+86 512 57468418