

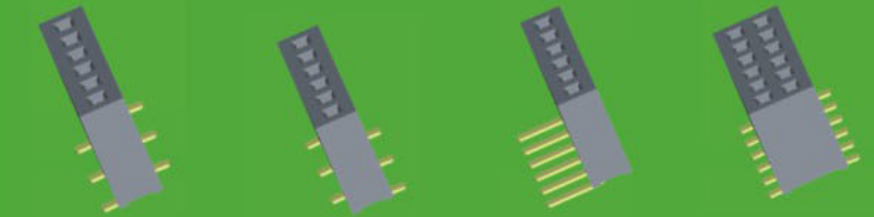
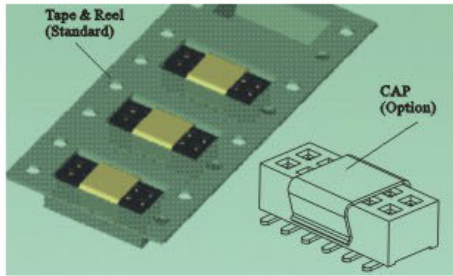
2344-1XXXXXXUNX1 2344-2XXXXXXUNX1 2344-2XXSXXXUNX2 2344-2XXCXXXUNX1

1.27mm Female Header, Single/Dual Row

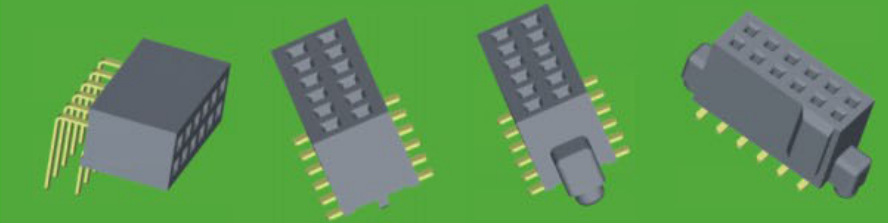
SPECIFICATIONS



Current Rating: 1.0AMP
 Contact Resistance: 20m Ω Max.
 Insulation Resistance: 1000M Ω Min.
 Withstanding Voltage : 500V AC/Minute
 Operation Temperature: -55°C to +125°C
 Contact Material: Phosphor Bronze
 Contact plating: Au or Sn Over Ni
 Insulator Material: Polyester (UL94V-0)
 Standard: PA6T+30%GF



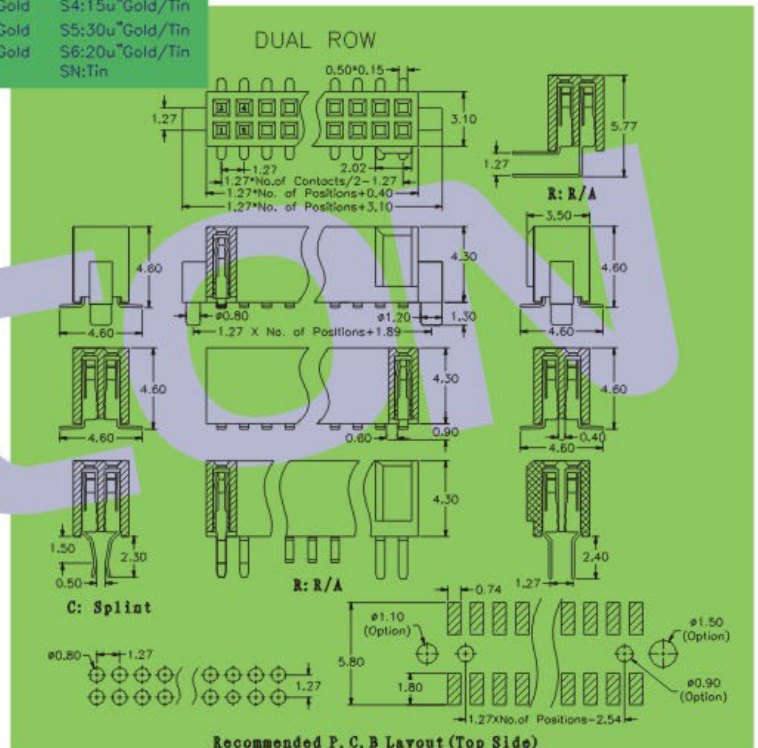
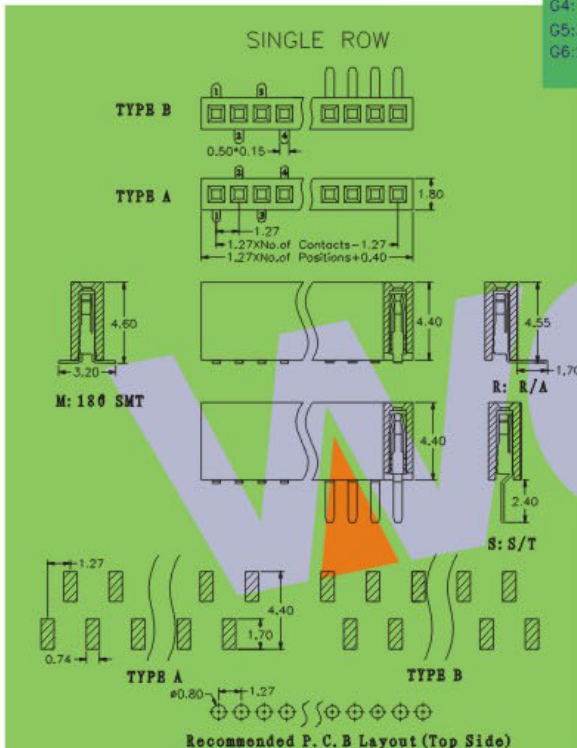
2344-1XXMXXXUNX1 2344-1XXMXXXUNX2 2344-1XXRXXXUNX1 2344-2XXMXXXUNX1



2344-2XXRXXXUNX1 2344-2XXMXXXUNX2 2344-2XXMXXXUNX3 2344-2XXMXXXUNX4

2344-X XX X XX X UN X X

NO. OF ROW 1: Single Row 2: Dual Row	NO. OF PINS PER ROW 02~50P	CONTACT SHAPE S: Straight M: 180° SMT R: Right Angle C: K Feet/Splint	CONTACT PLATING G0: 1u" Gold G1: 3u" Gold G2: 5u" Gold G3: 10u" Gold G4: 15u" Gold G5: 30u" Gold G6: 20u" Gold	PLATING S0: 1u" Gold/Tin S1: 3u" Gold/Tin S2: 5u" Gold/Tin S3: 10u" Gold/Tin S4: 15u" Gold/Tin S5: 30u" Gold/Tin S6: 20u" Gold/Tin SN: Tin	INSULATOR MATERIAL C: PA6T D: LCP	PACKING T: Tube R: Tape & Reel P: Tube+CAP
---	--------------------------------------	--	--	---	--	--



※ INNOVATION AND DEVELOPMENT ※ CONTINUAL IMPROVEMENT ※ QUALITY FOREMOST ※ CUSTOMER SATISFACTION ※

Http:www.wafe-china.com E-mail:sales@wafe-china.com

WAFE DONGGUAN FAX:+86 769 85358915 TEL:+86 769 85358920
 WAFE KUNSHAN FAX:+86 512 57468468 TEL:+86 512 57468418