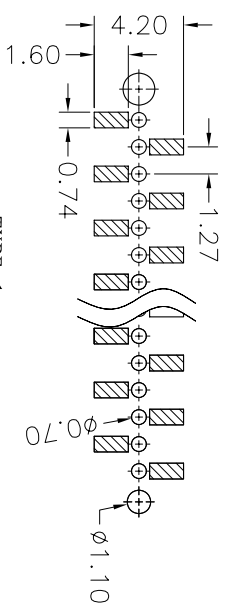
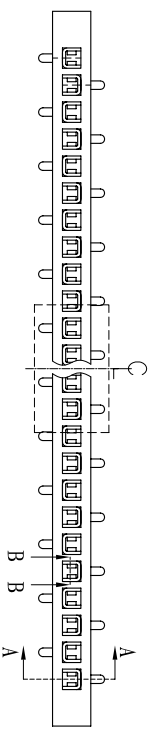




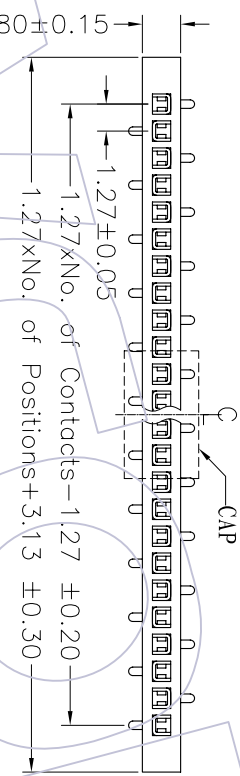
Recommended P.C.B Layout(BOTTOM ENTER)
(PCB BOARD TOLERANCE±0.05)

NOTES:
Current Rating: 1.0AMP
Withstand Voltage: 500V AC/DC
Contact Resistance: 20mΩ Max
Insulation Resistance: 1000MΩMin
Operation Temperature: -40°C to +105°C

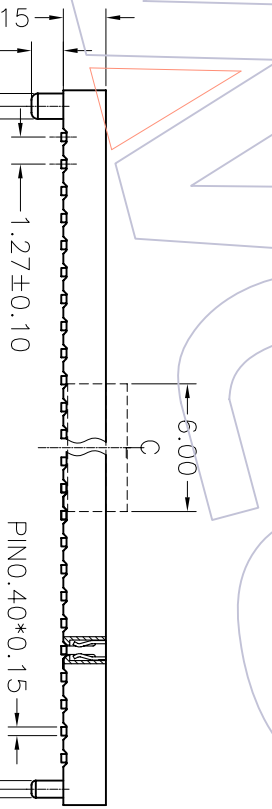
Contact Material: Phosphor Bronze
Contact plating: Au or Sn over Ni
Insulator Material: PA6T+30%G. F UL94V-0



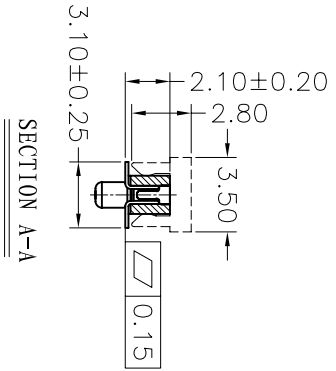
TYPE 1



TYPE 2



SECTION B-B



SECTION A-A

Ordering Information

2320T - 1 XX M XX C U N T X

No. of Pins per ROW: 02-50PIN
Contact Plating: G1=Gold Finish
G2=5μ Gold
G3=10μ Gold
G4=15μ Gold
G5=30μ Gold
S1=Gold Plating
S2=5μ Gold/Tin
S3=10μ Gold/Tin
S4=15μ Gold/Tin
S5=30μ Gold/Tin
SN=Tin
Packing: T=Tube
R=Reel
P=Tube+CAP
Series No. 1=TYPE 1
2=TYPE 2

REV	DATE	MODIFICATION DESCRIPTION	CHANGE	APPROVE	OPERATION	DRAW	SCALE	PART NO.	SEE TABLE
A0	08/02/14	NEW			XX ±0.40	DESIGN	UNIT mm	2320T-1XXMXXCUNT1	Single Bottom Enter SWT
					X.XX ±0.25	CHECK	SIZE A4	2320T-1XXMXXCUNT2	H=2.0 With different post
					X.XXX ±0.15		SHEET		
					Angle ± 3°	APPROVE	PROJ.	Customer NO.	
					DIM				
					TOL				

WCON 维峰五金电子有限公司
WAVE HARDWARE ELECTRONICS CO. LTD

SEE TABLE

FHL: 27mm Single Bottom Enter SWT
H=2.0 With different post