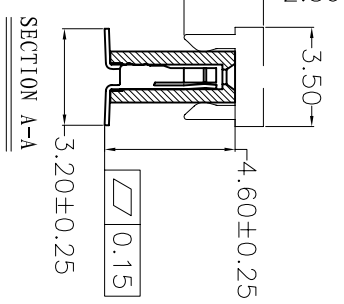
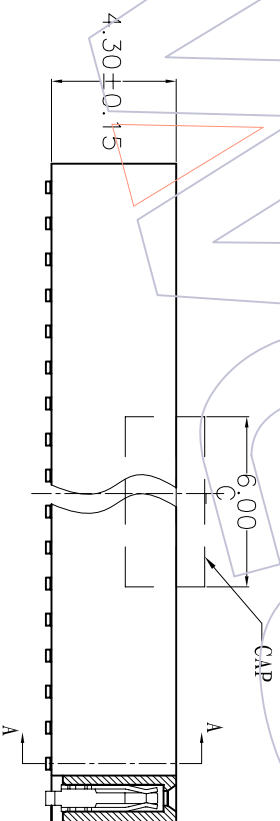
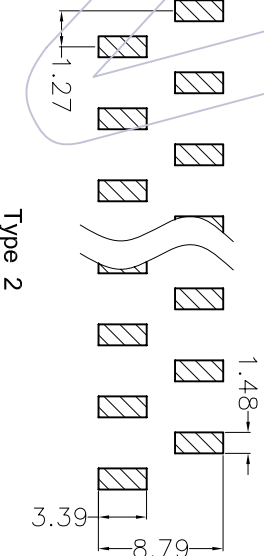
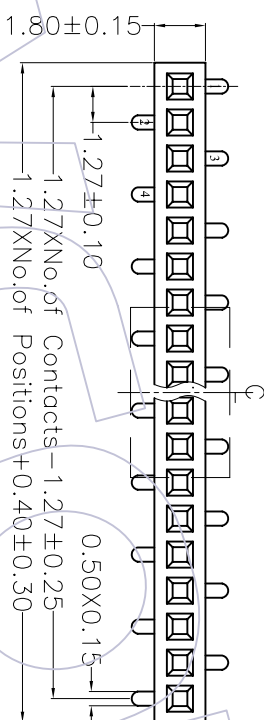
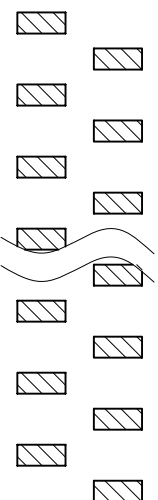
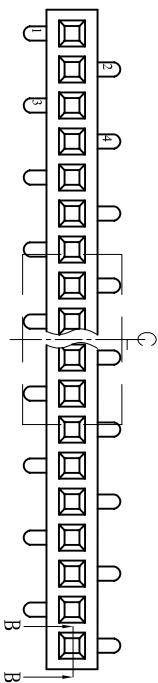


HSP

Recommended P.C.B Layout(TOP Side)
(PCB BOARD TOLERANCE±0.05)

NOTES:
Current Rating: 1.0AMP
Withstand Voltage: 500V AC/DC
Contact Resistance: 20mΩ Max
Insulation Resistance: 1000MΩMin
Operation Temperature: -40°C to +105°C

Contact Material: Phosphor Bronze
Contact plating: Au or Sn over Ni
Insulator Material: PA6T+30%G. F UL94V-0



Ordering Information

2344 - 1 XX M XX C U N T X

No. of Pins per ROW: 02-50PIN

Contact Plating: GO=Gold Flash
GI=3μ"Gold
G2=5μ"Gold
G3=10μ"Gold
G4=15μ"Gold
G5=30μ"Gold
SO=Gold Flash/Tin
SI=3μ"Gold/Tin
S2=5μ"Gold/Tin
S3=10μ"Gold/Tin
S4=15μ"Gold/Tin
S5=30μ"Gold/Tin
SN=1Tin

Packaging: T=Tube
R=Tube&Reel+CAP
P=Tube+CAP

Series No. 1=TYPE 1
2=TYPE 2

OPERATION: X.X ±0.40
DESIGN: X.XX ±0.25
CHECK: X.XXX ±0.15
Angle: ± 3'

TITLE	PART NO.
TYPE 1	2344-1XXMXXUX1
TYPE 2	2344-1XXMXXUX2

WCON 维峰五金电子有限公司
WAVE HARDWARE ELECTRONICS CO. LTD

REV	DATE	MODIFICATION DESCRIPTION	CHANGE	APPROVE	OPERATION	DRAW	SCALE	PART NO.
A0	08/02/14	NEW			X.X ±0.40	DESIGN	3:1	SEE TABLE
					X.XX ±0.25	CHECK	mm	
					X.XXX ±0.15		A4	
					Angle ± 3'		1/1	
					DIM TOL	APPROVE	PROJ.	Customer NO.

REV	DATE	MODIFICATION DESCRIPTION	CHANGE	APPROVE	OPERATION	DRAW	SCALE	PART NO.
1					X.X ±0.40	DESIGN	3:1	SEE TABLE
2					X.XX ±0.25	CHECK	mm	
3					X.XXX ±0.15		A4	
4					Angle ± 3'		1/1	
5					DIM TOL	APPROVE	PROJ.	Customer NO.