

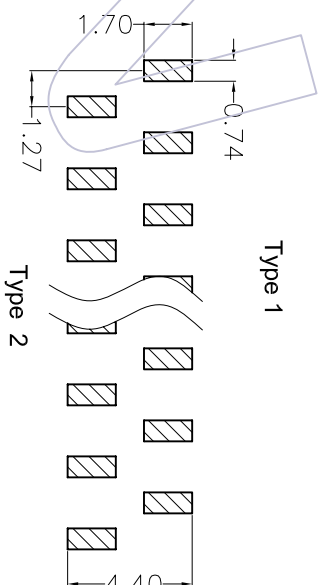
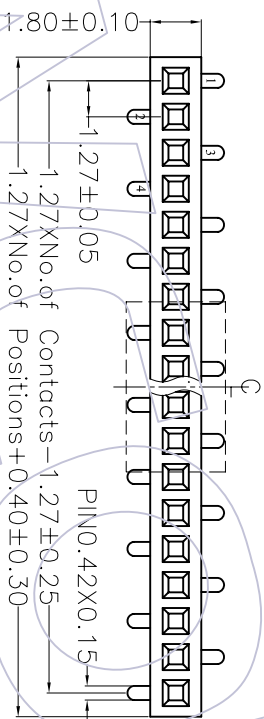
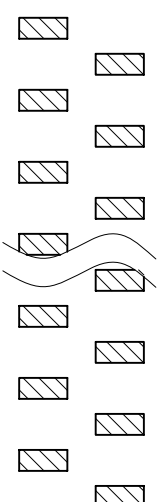
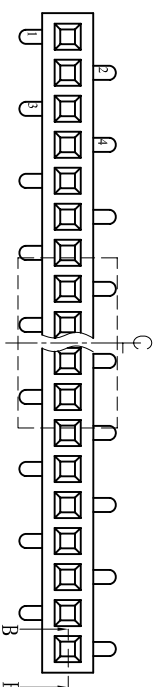
HSP

Recommended P.C.B Layout(Top Side)
(PCB BOARD TOLERANCE±0.05)

NOTES:

Current Rating: 1.0AMP
Withstand Voltage: 500V AC/DC
Contact Resistance: 20mΩ Max
Insulation Resistance: 1000MΩMin
Operation Temperature: -40°C to +105°C

Contact Material: Phosphor Bronze
Contact plating: Au or Sn over Ni
Insulator Material: PA6T+30%G, F UL94V-0



Ordering Information

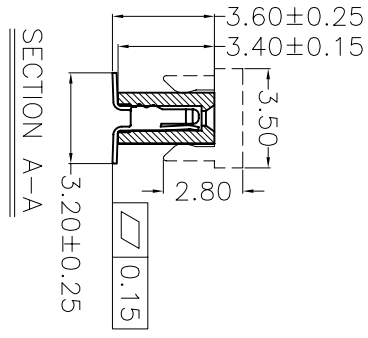
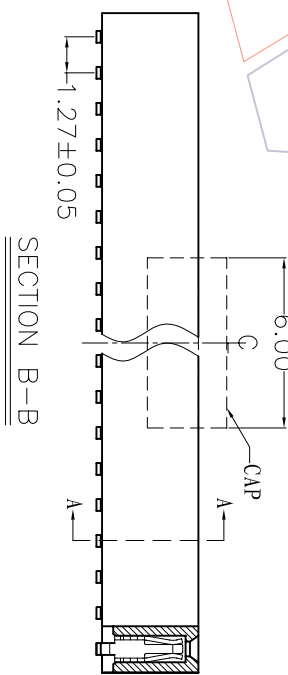
2334 - 1 XX M XX CUNT X

No. of Pins per ROW: 02-50PIN

Contact Plating: GO=Gold Flash, G1=3μ"Gold, G2=5μ"Gold, G3=10μ"Gold, G4=15μ"Gold, G5=30μ"Gold, S0=Gold Flash/Tin, S1=3μ"Gold/Tin, S2=5μ"Gold/Tin, S3=10μ"Gold/Tin, S4=15μ"Gold/Tin, S5=30μ"Gold/Tin, SN=Tin

Packaging: T=Tube, R=Tray&Reel+CAP, P=Tube+CAP

Series No. 1=TYPE 1, 2=TYPE 2



TITLE	PART NO.
TYPE 1	2334-1XXMXXCUNT1
TYPE 2	2334-1XXMXXCUNT2

WCON 维峰五金电子有限公司
WAFE HARDWARE ELECTRONICS CO.,LTD

REV	DATE	MODIFICATION DESCRIPTION	CHANGE	APPROVE	OPERATION	DRAW	SCALE	UNIT	PART NO.	TITLE:
A0	08/02/16	NEW			XXX XXX XXX	DESIGN CHECK	3:1 mm A4	mm		SEE TABLE
1					Angle DIM	CHECK APPROVE	1/1	1/1		1.27mm SINGLE FEMALE HEADER SWT H=3.40