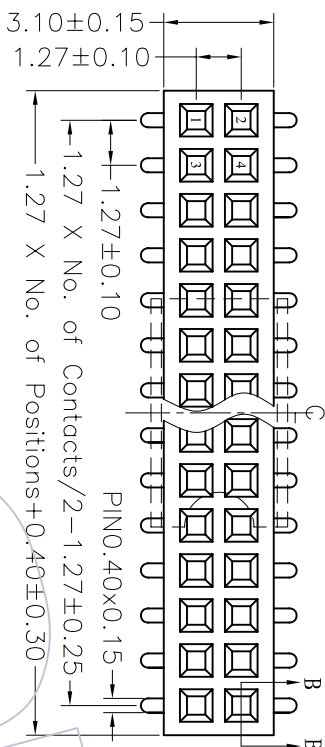


HSP

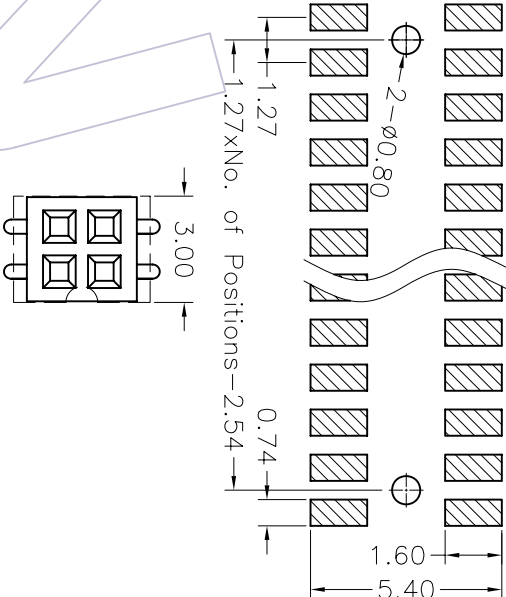
NOTES:

Current Rating: 1.0AMP
 Withstand Voltage: 500V AC/DC
 Contact Resistance: 20mΩ Max
 Insulation Resistance: 1000MΩMin
 Operation Temperature: -40°C to +105°C

Contact Material: Phosphor Bronze
 Contact plating: Au or Sn over Ni
 Insulator Material: PA6T+30%G, F UL94V-0



Recommended P.C.B Layout(Top Side)
 (PCB BOARD TOLERANCE±0.05)



Special CAP for 2*2pin

Ordering Information

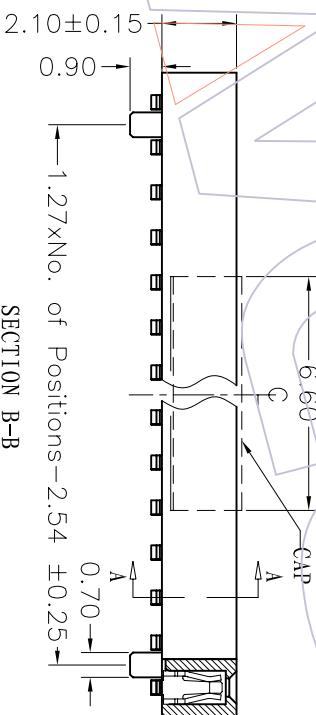
2321 - 2 XX M XX C U N T X

No. of Pins per ROW: 02-50/PIN

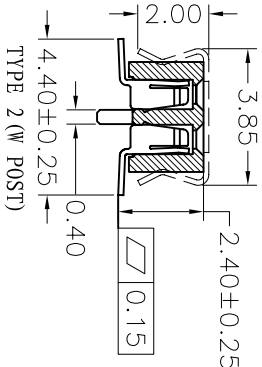
Contact Plating:
 G0=Gold Flash
 G1=5μ"Gold
 G2=5μ"Gold
 G3=10μ"Gold
 G4=15μ"Gold
 G5=30μ"Gold
 S0=Gold Flash/Tin
 S1=5μ"Gold/Tin
 S2=5μ"Gold/Tin
 S3=10μ"Gold/Tin
 S4=15μ"Gold/Tin
 S5=30μ"Gold/Tin
 SN=Tin

Packing:
 T=Tube
 R=Tape&Reel+CAP
 P=Tube+CAP

Series No.
 1=TYPE 1
 2=TYPE 2



SECTION B-B



SECTION A-A

TITLE	PART NO.
TYPE 1	2321-2XXMXXCUNT1
TYPE 2	2321-2XXMXXCUNT2

WCON 维峰五金电子有限公司
 WAVE HARDWARE ELECTRONICS CO. LTD

SEE TABLE

REV	DATE	MODIFICATION DESCRIPTION	CHANGE	APPROVE	OPERATION	DRAW	SCALE	PART NO.
A0	08/02/16	NEW			XXX XXX XXX	DESIGN CHECK	5:1 mm A4	1.27mm DUAL FEMALE HEADER SWT H=2.10
					Angle DIM	CHECK APPROVE		
					± 3'			